

## DATASHEET

# Beta3-tubulin Mouse Monoclonal Antibody(C2087)

CAT. NO. AMA01699

### KEY FEATURES

Target	Beta3-tubulin	Source / Host	Mouse
Reactivity	Human, Mouse, Rat	Clonality	Monoclonal
Applications	WB	Conjugation	Unconjugated
Form / Buffer	Liquid in 0.42% Potassium phosphate, 0.87% Sodium chloride, pH 7.3, 30% glycerol, and 0.01% sodium azide.		Storage at-20°C

### BACKGROUND

Tubulin is the major constituent of microtubules, protein filaments consisting of alpha- and beta-tubulin heterodimers . Microtubules grow by the addition of GTP-tubulin dimers to the microtubule end, where a stabilizing cap forms . Below the cap, alpha-beta tubulin heterodimers are in GDP-bound state, owing to GTPase activity of alpha-tubulin . TUBB3 plays a critical role in proper axon guidance and maintenance . Binding of NTN1/Netrin-1 to its receptor UNC5C might cause dissociation of UNC5C from polymerized TUBB3 in microtubules and thereby lead to increased microtubule dynamics and axon repulsion . Plays a role in dorsal root ganglion axon projection towards the spinal cord .

### APPLICATION

To ensure optimal assay performance, AREX recommends conducting reagent titration tailored to each testing system for optimal detection results.

WB	1:2000 - 1:5000
----	-----------------

\*Results are sample-specific. Please refer to your local assay conditions and test parameters for reference.

### PRODUCT OVERVIEW

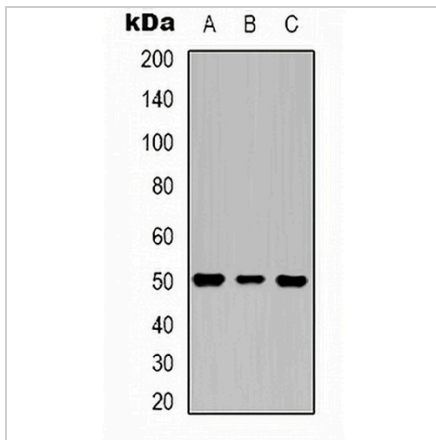
Description	Mouse monoclonal antibody to Beta3-tubulin
Specificity	Recognizes endogenous levels of Beta3-tubulin protein.
Antibody Type	Primary antibody
Immunogen	KLH-conjugated synthetic peptide encompassing a sequence of human Beta3-tubulin. The exact sequence is proprietary.
Purification	Affinity chromatography
Molecular Weight	Predicted: 50 kD; Observed: 52 kD
Form/Buffer	Liquid in 0.42% Potassium phosphate, 0.87% Sodium chloride, pH 7.3, 30% glycerol, and 0.01% sodium azide.
Alternative Names	TUBB4; Tubulin beta-3 chain; Tubulin beta-4 chain; Tubulin beta-III
Gene Symbol	TUBB3
Entrez Gene	10381(Human); 22152(Mouse); 246118(Rat)
SwissProt	Q13509(Human); Q9ERD7(Mouse); Q4QRB4(Rat)

\*AREX continuously optimizes our products. Webpage content may not reflect the latest updates. For inquiries, please contact [info@arexbio.com](mailto:info@arexbio.com) or your local distributor.

\*Clone Number, Reactivity, Source/Host and Clonality can be found in the product name and Key Features section above.

**DATASHEET****Beta3-tubulin Mouse Monoclonal Antibody(C2087)**

CAT. NO. AMA01699

**DATA**

Western blot analysis of Beta3-tubulin expression in HeLa (A), mouse brain (B), rat brain (C) whole cell lysates. (Predicted band size: 50 kD; Observed band size: 52 kD)

**STORAGE**

Store at 4°C short term. For long term storage, store at -20°C, avoiding freeze/thaw cycles.

**NOTE**

For Research Use Only. Not for diagnostic, therapeutics, prophylactic or in vivo use.