

DATASHEET

HRP-conjugated Beta-actin Mouse Monoclonal Antibody(C2092)

CAT. NO. AMA01704

KEY FEATURES

Target	Beta-actin	Source / Host	Mouse
Reactivity	Human, Mouse, Rat, Monkey, Chicken, Pig, Rabbit, Zebrafish	Clonality	Monoclonal
Applications	WB	Conjugation	HRP
Form / Buffer	Liquid in 0.42% Potassium phosphate, 0.87% Sodium chloride, pH 7.3, 30% glycerol, and 0.01% sodium azide.		Storage at-20°C

BACKGROUND

Actin is a highly conserved protein that polymerizes to produce filaments that form cross-linked networks in the cytoplasm of cells . Actin exists in both monomeric (G-actin) and polymeric (F-actin) forms, both forms playing key functions, such as cell motility and contraction . In addition to their role in the cytoplasmic cytoskeleton, G- and F-actin also localize in the nucleus, and regulate gene transcription and motility and repair of damaged DNA . Plays a role in the assembly of the gamma-tubulin ring complex (gTuRC), which regulates the minus-end nucleation of alpha-beta tubulin heterodimers that grow into microtubule protofilaments . Part of the ACTR1A/ACTB filament around which the dynactin complex is built .

APPLICATION

To ensure optimal assay performance, AREX recommends conducting reagent titration tailored to each testing system for optimal detection results.

WB	1:50000 - 1:200000
----	--------------------

*Results are sample-specific. Please refer to your local assay conditions and test parameters for reference.

PRODUCT OVERVIEW

Description	Mouse monoclonal antibody to Beta-actin-HRP labeled
Specificity	Recognizes endogenous levels of Beta-actin protein.
Antibody Type	Primary antibody
Immunogen	KLH-conjugated synthetic peptide encompassing a sequence of human Beta-actin-HRP labeled. The exact sequence is proprietary.
Purification	Affinity chromatography
Molecular Weight	Predicted: 41 kD; Observed: 42 kD
Form/Buffer	Liquid in 0.42% Potassium phosphate, 0.87% Sodium chloride, pH 7.3, 30% glycerol, and 0.01% sodium azide.
Alternative Names	Actin cytoplasmic 1; Beta-actin
Gene Symbol	ACTB
Entrez Gene	60(Human); 11461(Mouse); 81822(Rat)
SwissProt	P60709(Human); P60710(Mouse); P60711(Rat)

*AREX continuously optimizes our products. Webpage content may not reflect the latest updates. For inquiries, please contact info@arexbio.com or your local distributor.

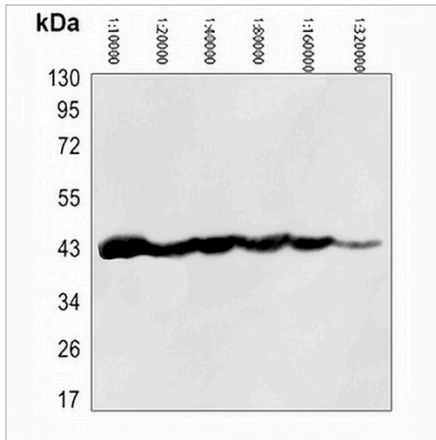
*Clone Number, Reactivity, Source/Host and Clonality can be found in the product name and Key Features section above.

DATASHEET

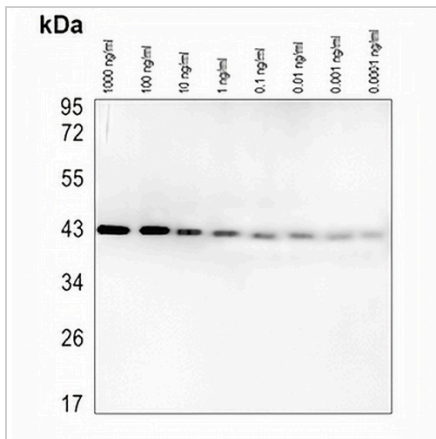
HRP-conjugated Beta-actin Mouse Monoclonal Antibody(C2092)

CAT. NO. AMA01704

DATA



Western blot analysis of Beta-actin Antibody-HRP labeled expression in HEK293T whole cell lysates using different dilutions from 1:10000 to 1:320000. (Predicted band size: 41 kD; Observed band size: 42 kD)



Western blot analysis of Beta-actin Antibody-HRP labeled using different Recombinant Human ACTB Protein concentration from 1000 ng/ml to 0.0001 ng/ml.

STORAGE

Store at 4°C short term. For long term storage, store at -20°C, avoiding freeze/thaw cycles.

NOTE

For Research Use Only. Not for diagnostic, therapeutics, prophylactic or in vivo use.