

DATASHEET

HRP-conjugated Beta-tubulin Mouse Monoclonal Antibody(C2100)

CAT. NO. AMA01712

KEY FEATURES

| | | | |
|---------------|---|---------------|------------|
| Target | Beta-tubulin | Source / Host | Mouse |
| Reactivity | Human, Mouse, Rat, Monkey, Chicken, Pig, Rabbit, Zebrafish, Arabidopsis thaliana | Clonality | Monoclonal |
| Applications | WB | Conjugation | HRP |
| Form / Buffer | Liquid in 0.42% Potassium phosphate, 0.87% Sodium chloride, pH 7.3, 30% glycerol, and 0.01% sodium azide. | Storage | at-20°C |

BACKGROUND

Tubulin is the major constituent of microtubules, a cylinder consisting of laterally associated linear protofilaments composed of alpha- and beta-tubulin heterodimers. Microtubules grow by the addition of GTP-tubulin dimers to the microtubule end, where a stabilizing cap forms. Below the cap, tubulin dimers are in GDP-bound state, owing to GTPase activity of alpha-tubulin.

APPLICATION

To ensure optimal assay performance, AREX recommends conducting reagent titration tailored to each testing system for optimal detection results.

| | |
|----|--------------------|
| WB | 1:50000 - 1:200000 |
|----|--------------------|

*Results are sample-specific. Please refer to your local assay conditions and test parameters for reference.

PRODUCT OVERVIEW

| | |
|-------------------|---|
| Description | Mouse monoclonal antibody to Beta-tubulin-HRP labeled |
| Specificity | Recognizes endogenous levels of Beta-tubulin protein. |
| Antibody Type | Primary antibody |
| Immunogen | Recombinant protein corresponding to human Beta-tubulin. |
| Purification | Affinity chromatography |
| Molecular Weight | Predicted: 49 kD; Observed: 55 kD |
| Form/Buffer | Liquid in 0.42% Potassium phosphate, 0.87% Sodium chloride, pH 7.3, 30% glycerol, and 0.01% sodium azide. |
| Alternative Names | TUBB5; Tubulin beta chain; Tubulin beta-5 chain |
| Gene Symbol | TUBB |
| Entrez Gene | 203068(Human) |
| SwissProt | P07437(Human) |

*AREX continuously optimizes our products. Webpage content may not reflect the latest updates. For inquiries, please contact info@arexbio.com or your local distributor.

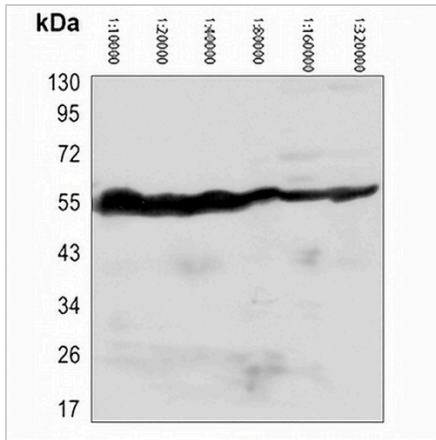
*Clone Number, Reactivity, Source/Host and Clonality can be found in the product name and Key Features section above.

DATASHEET

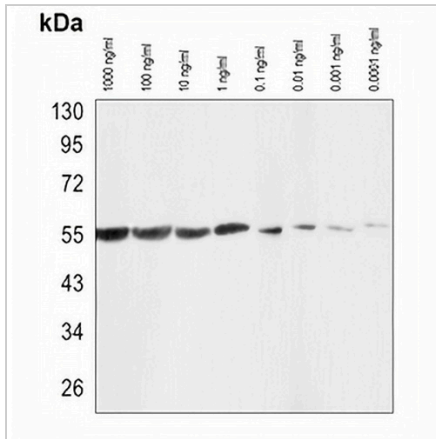
HRP-conjugated Beta-tubulin Mouse Monoclonal Antibody(C2100)

CAT. NO. AMA01712

DATA



Western blot analysis of Beta-tubulin Antibody-HRP labeled expression in HEK293T whole cell lysates using different dilutions from 1:10000 to 1:320000. (Predicted band size: 49 kD; Observed band size: 55 kD)



Western blot analysis of Beta-tubulin Antibody-HRP labeled using different Recombinant Human Beta-tubulin Protein concentration from 1000 ng/ml to 0.0001 ng/ml.

STORAGE

Store at 4°C short term. For long term storage, store at -20°C, avoiding freeze/thaw cycles.

NOTE

For Research Use Only. Not for diagnostic, therapeutics, prophylactic or in vivo use.