

DATASHEET

Cytokeratin 17 Mouse Monoclonal Antibody(C2116)

CAT. NO. AMA01728

KEY FEATURES

Target	Cytokeratin 17	Source / Host	Mouse
Reactivity	Human	Clonality	Monoclonal
Applications	WB, IP	Conjugation	Unconjugated
Form / Buffer	Liquid in 0.42% Potassium phosphate, 0.87% Sodium chloride, pH 7.3, 30% glycerol, and 0.01% sodium azide.		Storage at-20°C

BACKGROUND

Type I keratin involved in the formation and maintenance of various skin appendages, specifically in determining shape and orientation of hair . Required for the correct growth of hair follicles, in particular for the persistence of the anagen (growth) state . Modulates the function of TNF in the specific context of hair cycling. Regulates protein synthesis and epithelial cell growth through binding to the adapter protein SFN and by stimulating Akt/mTOR pathway . Involved in tissue repair. May be a marker of basal cell differentiation in complex epithelia and therefore indicative of a certain type of epithelial 'stem cells'.

APPLICATION

To ensure optimal assay performance, AREX recommends conducting reagent titration tailored to each testing system for optimal detection results.

WB	1:1000 - 1:2000
IP	1:50 - 1:200

*Results are sample-specific. Please refer to your local assay conditions and test parameters for reference.

PRODUCT OVERVIEW

Description	Mouse monoclonal antibody to Cytokeratin 17
Specificity	Recognizes endogenous levels of Cytokeratin 17 protein.
Antibody Type	Primary antibody
Immunogen	KLH-conjugated synthetic peptide encompassing a sequence of human Cytokeratin 17. The exact sequence is proprietary.
Purification	Affinity chromatography
Molecular Weight	Predicted: 48 kD; Observed: 48 kD
Form/Buffer	Liquid in 0.42% Potassium phosphate, 0.87% Sodium chloride, pH 7.3, 30% glycerol, and 0.01% sodium azide.
Alternative Names	Keratin type I cytoskeletal 17; 39.1; Cytokeratin-17; CK-17; Keratin-17; K17
Gene Symbol	KRT17
Entrez Gene	3872(Human)
SwissProt	Q04695(Human)

*AREX continuously optimizes our products. Webpage content may not reflect the latest updates. For inquiries, please contact info@arexbio.com or your local distributor.

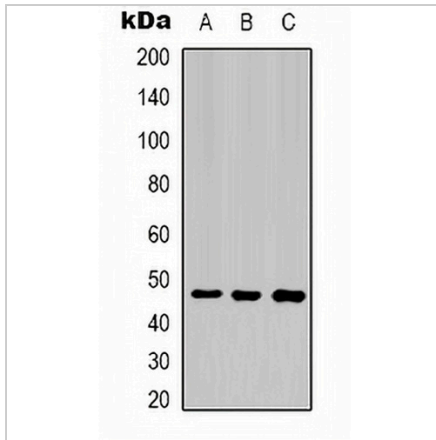
*Clone Number, Reactivity, Source/Host and Clonality can be found in the product name and Key Features section above.

DATASHEET

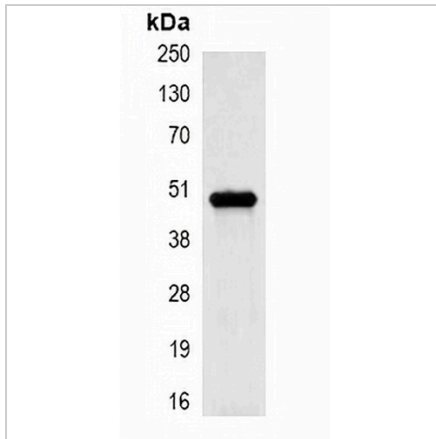
Cytokeratin 17 Mouse Monoclonal Antibody(C2116)

CAT. NO. AMA01728

DATA



Western blot analysis of Cytokeratin 17 expression in HeLa (A), MCF7 (B), 293T (C) whole cell lysates. (Predicted band size: 48 kD; Observed band size: 48 kD)



Immunoprecipitation of Cytokeratin 17 from 0.5mg HeLa whole cell extract lysate, using Anti-Cytokeratin 17 Antibody.

STORAGE

Store at 4°C short term. For long term storage, store at -20°C, avoiding freeze/thaw cycles.

NOTE

For Research Use Only. Not for diagnostic, therapeutics, prophylactic or in vivo use.