

DATASHEET

Cytokeratin 18 Mouse Monoclonal Antibody(C2117)

CAT. NO. AMA01729

KEY FEATURES

Target	Cytokeratin 18	Source / Host	Mouse
Reactivity	Human, Mouse	Clonality	Monoclonal
Applications	WB	Conjugation	Unconjugated
Form / Buffer	Liquid in 0.42% Potassium phosphate, 0.87% Sodium chloride, pH 7.3, 30% glycerol, and 0.01% sodium azide.	Storage	at-20°C

BACKGROUND

Required for the formation of KRT8/KRT18 filaments that are involved in ARHGEF40-mediated actin stress fiber formation and tensional force-induced stress fiber formation and reinforcement . Also acts downstream of ROCK kinase activation as part of a positive feedback mechanism in response to cellular mechanical stress loading . Organization and orientation of KRT18 filaments are responsible for the properly elongated morphology of epithelial tubules . Involved in the uptake of thrombin-antithrombin complexes by hepatic cells . When phosphorylated, plays a role in filament reorganization. Involved in the delivery of mutated CFTR to the plasma membrane. Together with KRT8, is involved in interleukin-6 (IL-6)-mediated barrier protection.

APPLICATION

To ensure optimal assay performance, AREX recommends conducting reagent titration tailored to each testing system for optimal detection results.

WB	1:500 - 1:1000
----	----------------

*Results are sample-specific. Please refer to your local assay conditions and test parameters for reference.

PRODUCT OVERVIEW

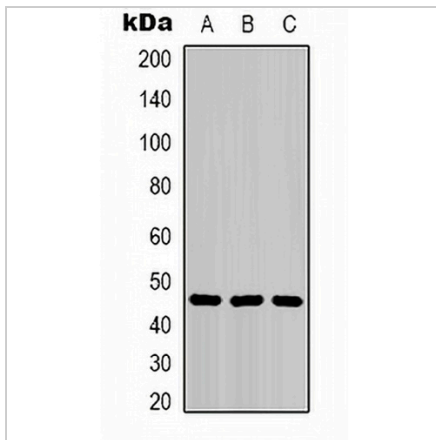
Description	Mouse monoclonal antibody to Cytokeratin 18
Specificity	Recognizes endogenous levels of Cytokeratin 18 protein.
Antibody Type	Primary antibody
Immunogen	Recombinant protein corresponding to human Cytokeratin 18.
Purification	Affinity chromatography
Molecular Weight	Predicted: 48 kD; Observed: 46 kD
Form/Buffer	Liquid in 0.42% Potassium phosphate, 0.87% Sodium chloride, pH 7.3, 30% glycerol, and 0.01% sodium azide.
Alternative Names	CYK18; Keratin type I cytoskeletal 18; Cell proliferation-inducing gene 46 protein; Cytokeratin-18; CK-18; Keratin-18; K18
Gene Symbol	KRT18
Entrez Gene	3875(Human); 16668(Mouse)
SwissProt	P05783(Human); P05784(Mouse)

*AREX continuously optimizes our products. Webpage content may not reflect the latest updates. For inquiries, please contact info@arexbio.com or your local distributor.

*Clone Number, Reactivity, Source/Host and Clonality can be found in the product name and Key Features section above.

DATASHEET**Cytokeratin 18 Mouse Monoclonal Antibody(C2117)**

CAT. NO. AMA01729

DATA

Western blot analysis of Cytokeratin 18 expression in HeLa (A), HepG2 (B), mouse skeletal muscle (C) whole cell lysates. (Predicted band size: 48 kD; Observed band size: 46 kD)

STORAGE

Store at 4°C short term. For long term storage, store at -20°C, avoiding freeze/thaw cycles.

NOTE

For Research Use Only. Not for diagnostic, therapeutics, prophylactic or in vivo use.