

**DATASHEET**

**Cytokeratin 18 Mouse Monoclonal Antibody(C2118)**

CAT. NO. AMA01730

**KEY FEATURES**

Target	Cytokeratin 18	Source / Host	Mouse
Reactivity	Human, Mouse, Rat	Clonality	Monoclonal
Applications	WB, IF/ICC	Conjugation	Unconjugated
Form / Buffer	Liquid in 0.42% Potassium phosphate, 0.87% Sodium chloride, pH 7.3, 30% glycerol, and 0.01% sodium azide.	Storage	at-20°C

**BACKGROUND**

Required for the formation of KRT8/KRT18 filaments that are involved in ARHGEF40-mediated actin stress fiber formation and tensional force-induced stress fiber formation and reinforcement . Also acts downstream of ROCK kinase activation as part of a positive feedback mechanism in response to cellular mechanical stress loading . Organization and orientation of KRT18 filaments are responsible for the properly elongated morphology of epithelial tubules . Involved in the uptake of thrombin-antithrombin complexes by hepatic cells . When phosphorylated, plays a role in filament reorganization. Involved in the delivery of mutated CFTR to the plasma membrane. Together with KRT8, is involved in interleukin-6 (IL-6)-mediated barrier protection.

**APPLICATION**

To ensure optimal assay performance, AREX recommends conducting reagent titration tailored to each testing system for optimal detection results.

WB	1:1000 - 1:3000
IF/ICC	1:100 - 1:200

\*Results are sample-specific. Please refer to your local assay conditions and test parameters for reference.

**PRODUCT OVERVIEW**

Description	Mouse monoclonal antibody to Cytokeratin 18
Specificity	Recognizes endogenous levels of Cytokeratin 18 protein.
Antibody Type	Primary antibody
Immunogen	Recombinant protein corresponding to human Cytokeratin 18.
Purification	Affinity chromatography
Molecular Weight	Predicted: 48 kD; Observed: 46 kD
Form/Buffer	Liquid in 0.42% Potassium phosphate, 0.87% Sodium chloride, pH 7.3, 30% glycerol, and 0.01% sodium azide.
Alternative Names	CYK18; Keratin type I cytoskeletal 18; Cell proliferation-inducing gene 46 protein; Cytokeratin-18; CK-18; Keratin-18; K18
Gene Symbol	KRT18
Entrez Gene	3875(Human); 16668(Mouse); 294853(Rat)
SwissProt	P05783(Human); P05784(Mouse); Q5BJY9(Rat)

\*AREX continuously optimizes our products. Webpage content may not reflect the latest updates. For inquiries, please contact [info@arexbio.com](mailto:info@arexbio.com) or your local distributor.

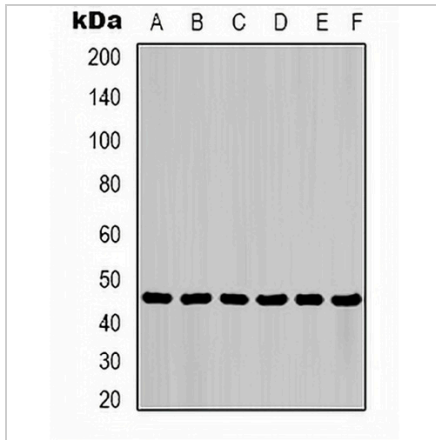
\*Clone Number, Reactivity, Source/Host and Clonality can be found in the product name and Key Features section above.

**DATASHEET**

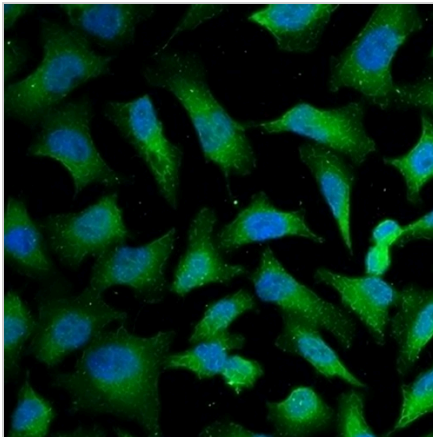
**Cytokeratin 18 Mouse Monoclonal Antibody(C2118)**

CAT. NO. AMA01730

**DATA**



Western blot analysis of Cytokeratin 18 expression in HepG2 (A), HeLa (B), mouse liver (C), mouse skeletal muscle (D), C2C12 (E), rat heart (F) whole cell lysates. (Predicted band size: 48 kD; Observed band size: 46 kD)



Immunofluorescent analysis of Cytokeratin 18 staining in HeLa cells. Formalin-fixed cells were permeabilized with 0.1% Triton X-100 in TBS for 5-10 minutes and blocked with 3% BSA-PBS for 30 minutes at room temperature. Cells were probed with the primary antibody in 3% BSA-PBS and incubated overnight at 4 °C in a humidified chamber. Cells were washed with PBST and incubated with a FITC-conjugated secondary antibody (green) in PBS at room temperature in the dark. DAPI was used to stain the cell nuclei (blue).

**STORAGE**

Store at 4°C short term. For long term storage, store at -20°C, avoiding freeze/thaw cycles.

**NOTE**

For Research Use Only. Not for diagnostic, therapeutics, prophylactic or in vivo use.