

DATASHEET

Cytokeratin 6 Mouse Monoclonal Antibody(C2120)

CAT. NO. AMA01732

KEY FEATURES

Target	Cytokeratin 6	Source / Host	Mouse
Reactivity	Human	Clonality	Monoclonal
Applications	WB	Conjugation	Unconjugated
Form / Buffer	Liquid in 0.42% Potassium phosphate, 0.87% Sodium chloride, pH 7.3, 30% glycerol, and 0.01% sodium azide.		Storage at-20°C

BACKGROUND

Epidermis-specific type I keratin involved in wound healing. Involved in the activation of follicular keratinocytes after wounding, while it does not play a major role in keratinocyte proliferation or migration. Participates in the regulation of epithelial migration by inhibiting the activity of SRC during wound repair.

APPLICATION

To ensure optimal assay performance, AREX recommends conducting reagent titration tailored to each testing system for optimal detection results.

WB	1:1000 - 1:2000
----	-----------------

*Results are sample-specific. Please refer to your local assay conditions and test parameters for reference.

PRODUCT OVERVIEW

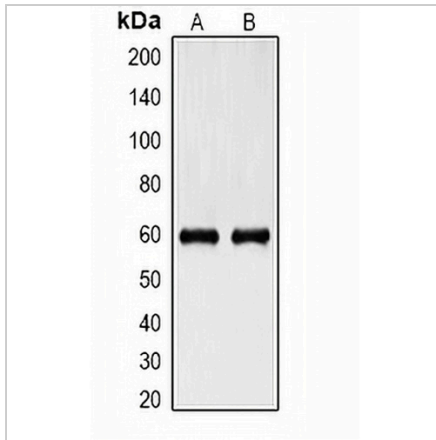
Description	Mouse monoclonal antibody to Cytokeratin 6
Specificity	Recognizes endogenous levels of Cytokeratin 6 protein.
Antibody Type	Primary antibody
Immunogen	KLH-conjugated synthetic peptide encompassing a sequence of human Cytokeratin 6. The exact sequence is proprietary.
Purification	Affinity chromatography
Molecular Weight	Predicted: 60 kD; Observed: 60 kD
Form/Buffer	Liquid in 0.42% Potassium phosphate, 0.87% Sodium chloride, pH 7.3, 30% glycerol, and 0.01% sodium azide.
Alternative Names	KRT6A; K6A; KRT6D; Keratin type II cytoskeletal 6A; Cytokeratin-6A; CK-6A; Cytokeratin-6D; CK-6D; Keratin-6A; K6A; Type-II keratin Kb6; allergen Hom s 5; KRT6B; K6B; KRTL1; Keratin type II cytoskeletal 6B; Cytokeratin-6B; CK-6B; Keratin-6B; K6B; Type-II keratin Kb10; KRT6C; KRT6E; Keratin type II cytoskeletal 6C; Cytokeratin-6C; CK-6C; Cytokeratin-6E; CK-6E; Keratin K6h; Keratin-6C; K6C; Type-II keratin Kb12
Gene Symbol	KRT6A; KRT6B; KRT6C
Entrez Gene	3854; 286887; 3853(Human)
SwissProt	P02538; P04259; P48668(Human)

*AREX continuously optimizes our products. Webpage content may not reflect the latest updates. For inquiries, please contact info@arexbio.com or your local distributor.

*Clone Number, Reactivity, Source/Host and Clonality can be found in the product name and Key Features section above.

DATASHEET**Cytokeratin 6 Mouse Monoclonal Antibody(C2120)**

CAT. NO. AMA01732

DATA

Western blot analysis of Cytokeratin 6 expression in HeLa (A), HepG2 (B) whole cell lysates.
(Predicted band size: 60 kD; Observed band size: 60 kD)

STORAGE

Store at 4°C short term. For long term storage, store at -20°C, avoiding freeze/thaw cycles.

NOTE

For Research Use Only. Not for diagnostic, therapeutics, prophylactic or in vivo use.