

**DATASHEET**

**Cytokeratin 7 Mouse Monoclonal Antibody(C2121)**

CAT. NO. AMA01733

**KEY FEATURES**

Target	Cytokeratin 7	Source / Host	Mouse
Reactivity	Human, Mouse, Rat	Clonality	Monoclonal
Applications	WB, IHC, IP	Conjugation	Unconjugated
Form / Buffer	Liquid in 0.42% Potassium phosphate, 0.87% Sodium chloride, pH 7.3, 30% glycerol, and 0.01% sodium azide.		Storage at-20°C

**BACKGROUND**

Blocks interferon-dependent interphase and stimulates DNA synthesis in cells. Involved in the translational regulation of the human papillomavirus type 16 E7 mRNA (HPV16 E7).

**APPLICATION**

To ensure optimal assay performance, AREX recommends conducting reagent titration tailored to each testing system for optimal detection results.

WB	1:1000 - 1:2000
IHC	1:100 - 1:200
IP	1:50 - 1:200

\*Results are sample-specific. Please refer to your local assay conditions and test parameters for reference.

**PRODUCT OVERVIEW**

Description	Mouse monoclonal antibody to Cytokeratin 7
Specificity	Recognizes endogenous levels of Cytokeratin 7 protein.
Antibody Type	Primary antibody
Immunogen	KLH-conjugated synthetic peptide encompassing a sequence of human Cytokeratin 7. The exact sequence is proprietary.
Purification	Affinity chromatography
Molecular Weight	Predicted: 51 kD; Observed: 54 kD
Form/Buffer	Liquid in 0.42% Potassium phosphate, 0.87% Sodium chloride, pH 7.3, 30% glycerol, and 0.01% sodium azide.
Alternative Names	SCL; Keratin type II cytoskeletal 7; Cytokeratin-7; CK-7; Keratin-7; K7; Sarcolectin; Type-II keratin Kb7
Gene Symbol	KRT7
Entrez Gene	3855(Human); 110310(Mouse); 300242(Rat)
SwissProt	P08729(Human); Q9DCV7(Mouse); Q6IG12(Rat)

\*AREX continuously optimizes our products. Webpage content may not reflect the latest updates. For inquiries, please contact [info@arexbio.com](mailto:info@arexbio.com) or your local distributor.

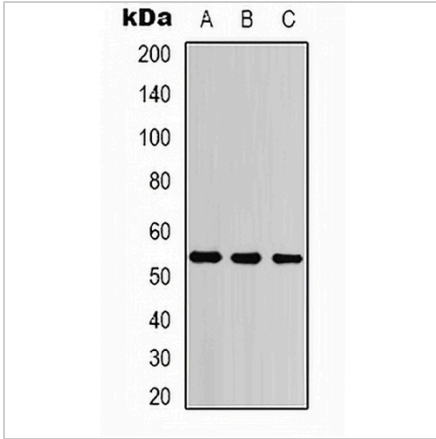
\*Clone Number, Reactivity, Source/Host and Clonality can be found in the product name and Key Features section above.

**DATASHEET**

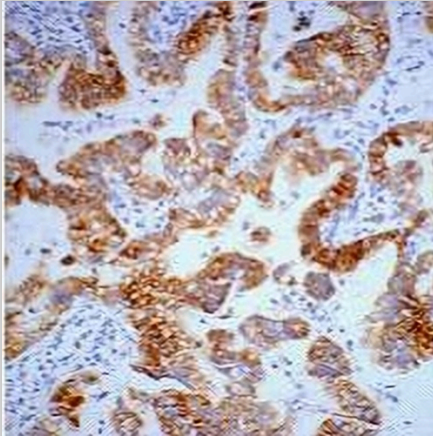
**Cytokeratin 7 Mouse Monoclonal Antibody(C2121)**

CAT. NO. AMA01733

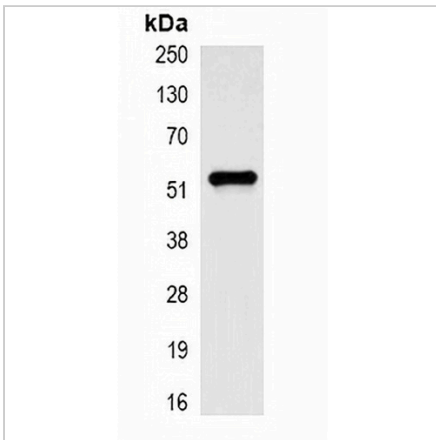
**DATA**



Western blot analysis of Cytokeratin 7 expression in HeLa (A), mouse kidney (B), mouse brain (C) whole cell lysates. (Predicted band size: 51 kD; Observed band size: 54 kD)



Immunohistochemical analysis of Cytokeratin 7 staining in human lung cancer formalin fixed paraffin embedded tissue section. The section was pre-treated using heat mediated antigen retrieval with sodium citrate buffer (pH 6.0). The section was then incubated with the antibody at room temperature and detected using an HRP conjugated compact polymer system. DAB was used as the chromogen. The section was then counterstained with haematoxylin and mounted with DPX.



Immunoprecipitation of Cytokeratin 7 from 0.5mg HeLa whole cell extract lysate, using Anti-Cytokeratin 7 Antibody.

**STORAGE**

Store at 4°C short term. For long term storage, store at -20°C, avoiding freeze/thaw cycles.

**NOTE**

For Research Use Only. Not for diagnostic, therapeutics, prophylactic or in vivo use.