

DATASHEET

Cytokeratin 8 Mouse Monoclonal Antibody(C2122)

CAT. NO. AMA01734

KEY FEATURES

| | | | |
|---------------|---|---------------|--------------------|
| Target | Cytokeratin 8 | Source / Host | Mouse |
| Reactivity | Human, Mouse, Rat | Clonality | Monoclonal |
| Applications | WB, IHC | Conjugation | Unconjugated |
| Form / Buffer | Liquid in 0.42% Potassium phosphate, 0.87% Sodium chloride, pH 7.3, 30% glycerol, and 0.01% sodium azide. | | Storage at-20°C |

BACKGROUND

Required for the formation of KRT8/KRT18 filaments that are involved in ARHGEF40-mediated actin stress fiber formation and tensional force-induced stress fiber formation and reinforcement . Together with KRT19, helps to link the contractile apparatus to dystrophin at the costameres of striated muscle.

APPLICATION

To ensure optimal assay performance, AREX recommends conducting reagent titration tailored to each testing system for optimal detection results.

| | |
|-----|-----------------|
| WB | 1:2000 - 1:5000 |
| IHC | 1:100 - 1:200 |

*Results are sample-specific. Please refer to your local assay conditions and test parameters for reference.

PRODUCT OVERVIEW

| | |
|-------------------|---|
| Description | Mouse monoclonal antibody to Cytokeratin 8 |
| Specificity | Recognizes endogenous levels of Cytokeratin 8 protein. |
| Antibody Type | Primary antibody |
| Immunogen | KLH-conjugated synthetic peptide encompassing a sequence of human Cytokeratin 8. The exact sequence is proprietary. |
| Purification | Affinity chromatography |
| Molecular Weight | Predicted: 53 kD; Observed: 54 kD |
| Form/Buffer | Liquid in 0.42% Potassium phosphate, 0.87% Sodium chloride, pH 7.3, 30% glycerol, and 0.01% sodium azide. |
| Alternative Names | CYK8; Keratin type II cytoskeletal 8; Cytokeratin-8; CK-8; Keratin-8; K8; Type-II keratin Kb8 |
| Gene Symbol | KRT8 |
| Entrez Gene | 3856(Human); 16691(Mouse); 25626(Rat) |
| SwissProt | P05787(Human); P11679(Mouse); Q10758(Rat) |

*AREX continuously optimizes our products. Webpage content may not reflect the latest updates. For inquiries, please contact info@arexbio.com or your local distributor.

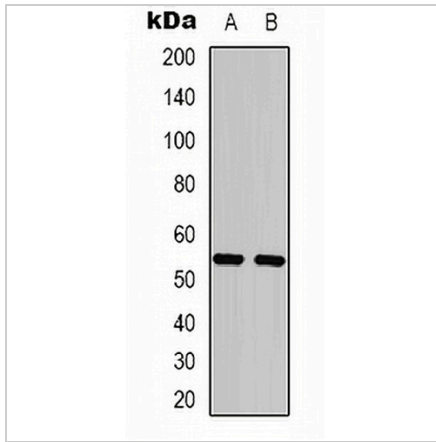
*Clone Number, Reactivity, Source/Host and Clonality can be found in the product name and Key Features section above.

DATASHEET

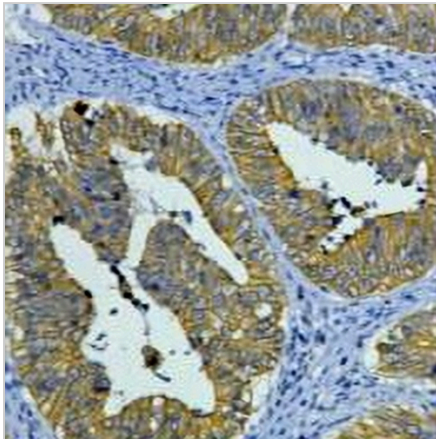
Cytokeratin 8 Mouse Monoclonal Antibody(C2122)

CAT. NO. AMA01734

DATA



Western blot analysis of Cytokeratin 8 expression in HeLa (A), mouse brain (B) whole cell lysates. (Predicted band size: 53 kD; Observed band size: 54 kD)



Immunohistochemical analysis of Cytokeratin 8 staining in human colon cancer formalin fixed paraffin embedded tissue section. The section was pre-treated using heat mediated antigen retrieval with sodium citrate buffer (pH 6.0). The section was then incubated with the antibody at room temperature and detected using an HRP conjugated compact polymer system. DAB was used as the chromogen. The section was then counterstained with haematoxylin and mounted with DPX.

STORAGE

Store at 4°C short term. For long term storage, store at -20°C, avoiding freeze/thaw cycles.

NOTE

For Research Use Only. Not for diagnostic, therapeutics, prophylactic or in vivo use.