

**DATASHEET**

**eIF4AI Mouse Monoclonal Antibody(C2125)**

CAT. NO. AMA01737

**KEY FEATURES**

Target	eIF4AI	Source / Host	Mouse
Reactivity	Human, Mouse, Rat	Clonality	Monoclonal
Applications	WB, IHC, IF/ICC	Conjugation	Unconjugated
Form / Buffer	Liquid in 0.42% Potassium phosphate, 0.87% Sodium chloride, pH 7.3, 30% glycerol, and 0.01% sodium azide.		Storage at-20°C

**BACKGROUND**

ATP-dependent RNA helicase which is a subunit of the eIF4F complex involved in cap recognition and is required for mRNA binding to ribosome . In the current model of translation initiation, eIF4A unwinds RNA secondary structures in the 5'-UTR of mRNAs which is necessary to allow efficient binding of the small ribosomal subunit, and subsequent scanning for the initiator codon. As a result, promotes cell proliferation and growth .

**APPLICATION**

To ensure optimal assay performance, AREX recommends conducting reagent titration tailored to each testing system for optimal detection results.

WB	1:1000 - 1:3000
IHC	1:100 - 1:200
IF/ICC	1:100 - 1:200

\*Results are sample-specific. Please refer to your local assay conditions and test parameters for reference.

**PRODUCT OVERVIEW**

Description	Mouse monoclonal antibody to eIF4AI
Specificity	Recognizes endogenous levels of eIF4AI protein.
Antibody Type	Primary antibody
Immunogen	KLH-conjugated synthetic peptide encompassing a sequence of human eIF4AI. The exact sequence is proprietary.
Purification	Affinity chromatography
Molecular Weight	Predicted: 46 kD; Observed: 46 kD
Form/Buffer	Liquid in 0.42% Potassium phosphate, 0.87% Sodium chloride, pH 7.3, 30% glycerol, and 0.01% sodium azide.
Alternative Names	DDX2A; EIF4A; Eukaryotic initiation factor 4A-I; eIF-4A-I; eIF4A-I; ATP-dependent RNA helicase eIF4A-1
Gene Symbol	EIF4A1
Entrez Gene	1973(Human); 13681(Mouse)
SwissProt	P60842(Human); P60843(Mouse)

\*AREX continuously optimizes our products. Webpage content may not reflect the latest updates. For inquiries, please contact [info@arexbio.com](mailto:info@arexbio.com) or your local distributor.

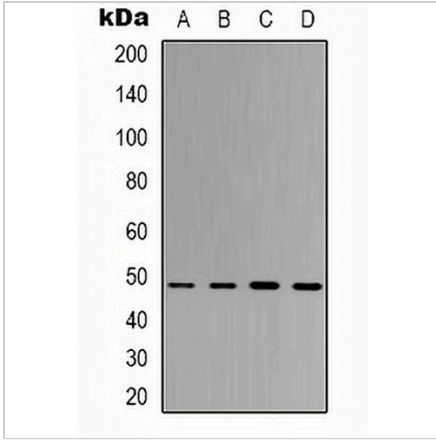
\*Clone Number, Reactivity, Source/Host and Clonality can be found in the product name and Key Features section above.

**DATASHEET**

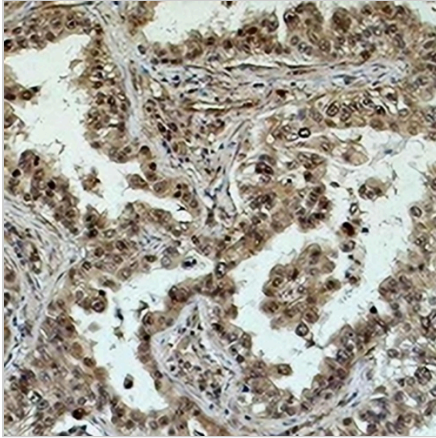
**eIF4AI Mouse Monoclonal Antibody(C2125)**

CAT. NO. AMA01737

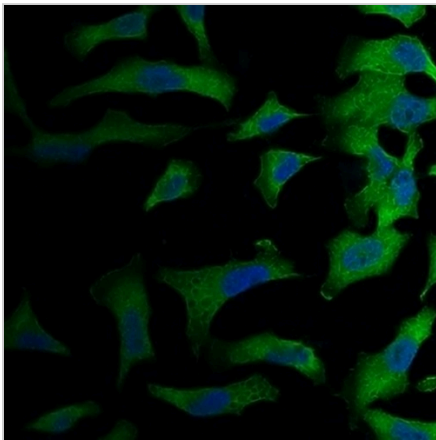
**DATA**



Western blot analysis of eIF4AI expression in 293T (A), HeLa (B), HepG2 (C), mouse brain (D) whole cell lysates. (Predicted band size: 46 kD; Observed band size: 46 kD)



Immunohistochemical analysis of eIF4AI staining in human lung cancer formalin fixed paraffin embedded tissue section. The section was pre-treated using heat mediated antigen retrieval with sodium citrate buffer (pH 6.0). The section was then incubated with the antibody at room temperature and detected using an HRP conjugated compact polymer system. DAB was used as the chromogen. The section was then counterstained with haematoxylin and mounted with DPX.



Immunofluorescent analysis of eIF4AI staining in HeLa cells. Formalin-fixed cells were permeabilized with 0.1% Triton X-100 in TBS for 5-10 minutes and blocked with 3% BSA-PBS for 30 minutes at room temperature. Cells were probed with the primary antibody in 3% BSA-PBS and incubated overnight at 4 °C in a humidified chamber. Cells were washed with PBST and incubated with a FITC-conjugated secondary antibody (green) in PBS at room temperature in the dark. DAPI was used to stain the cell nuclei (blue).

**STORAGE**

Store at 4°C short term. For long term storage, store at -20°C, avoiding freeze/thaw cycles.

**NOTE**

For Research Use Only. Not for diagnostic, therapeutics, prophylactic or in vivo use.