

DATASHEET

HRP-conjugated GAPDH Mouse Monoclonal Antibody(C2135)

CAT. NO. AMA01747

KEY FEATURES

Target	GAPDH	Source / Host	Mouse
Reactivity	Human, Mouse, Rat, Monkey, Chicken, Pig, Rabbit, Zebrafish	Clonality	Monoclonal
Applications	WB	Conjugation	HRP
Form / Buffer	Liquid in 0.42% Potassium phosphate, 0.87% Sodium chloride, pH 7.3, 30% glycerol, and 0.01% sodium azide.		Storage at-20°C

BACKGROUND

Catalyzes the conversion of D-glyceraldehyde 3-phosphate (G3P) into 3-phospho-D-glyceroyl phosphate in glycolysis and the reverse reaction in gluconeogenesis into 3-phospho-D-glyceroyl phosphate in glycolysis and the reverse reaction in gluconeogenesis . Also shows nitrosylase activity, thereby playing a role in nuclear functions . Modulates the organization and assembly of the cytoskeleton . Facilitates the CHP1-dependent microtubule and membrane associations through its ability to stimulate the binding of CHP1 to microtubules . Component of the GAIT (gamma interferon-activated inhibitor of translation) complex which mediates interferon-gamma-induced transcript-selective translation inhibition in inflammation processes .

APPLICATION

To ensure optimal assay performance, AREX recommends conducting reagent titration tailored to each testing system for optimal detection results.

WB	1:50000 - 1:200000
----	--------------------

*Results are sample-specific. Please refer to your local assay conditions and test parameters for reference.

PRODUCT OVERVIEW

Description	Mouse monoclonal antibody to GAPDH
Specificity	Recognizes endogenous levels of GAPDH protein.
Antibody Type	Primary antibody
Immunogen	KLH-conjugated synthetic peptide encompassing a sequence of human GAPDH. The exact sequence is proprietary.
Purification	Affinity chromatography
Molecular Weight	Predicted: 36 kD; Observed: 36 kD
Form/Buffer	Liquid in 0.42% Potassium phosphate, 0.87% Sodium chloride, pH 7.3, 30% glycerol, and 0.01% sodium azide.
Alternative Names	GAPD; Glyceraldehyde-3-phosphate dehydrogenase; GAPDH; Peptidyl-cysteine S-nitrosylase GAPDH
Gene Symbol	GAPDH
Entrez Gene	2597(Human); 100042025(Mouse); 24383(Rat)
SwissProt	P04406(Human); P16858(Mouse); P04797(Rat)

*AREX continuously optimizes our products. Webpage content may not reflect the latest updates. For inquiries, please contact info@arexbio.com or your local distributor.

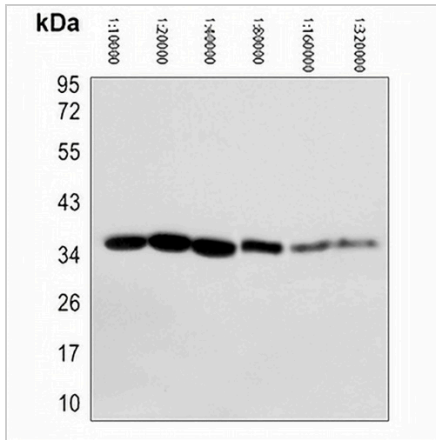
*Clone Number, Reactivity, Source/Host and Clonality can be found in the product name and Key Features section above.

DATASHEET

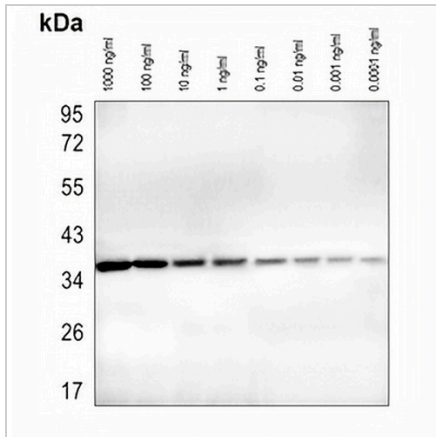
HRP-conjugated GAPDH Mouse Monoclonal Antibody(C2135)

CAT. NO. AMA01747

DATA



Western blot analysis of GAPDH Antibody-HRP labeled expression in HEK293T whole cell lysates using different dilutions from 1:10000 to 1:320000. (Predicted band size: 36 kD; Observed band size: 36 kD)



Western blot analysis of GAPDH Antibody-HRP labeled using different Recombinant Human GAPDH Protein concentration from 1000 ng/ml to 0.0001 ng/ml.

STORAGE

Store at 4°C short term. For long term storage, store at -20°C, avoiding freeze/thaw cycles.

NOTE

For Research Use Only. Not for diagnostic, therapeutics, prophylactic or in vivo use.