

## DATASHEET

# IDE Mouse Monoclonal Antibody(C2165)

CAT. NO. AMA01777

### KEY FEATURES

Target	IDE	Source / Host	Mouse
Reactivity	Human	Clonality	Monoclonal
Applications	WB	Conjugation	Unconjugated
Form / Buffer	Liquid in 0.42% Potassium phosphate, 0.87% Sodium chloride, pH 7.3, 30% glycerol, and 0.01% sodium azide.		Storage at-20°C

### BACKGROUND

Plays a role in the cellular breakdown of insulin, APP peptides, IAPP peptides, natriuretic peptides, glucagon, bradykinin, kallidin, and other peptides, and thereby plays a role in intercellular peptide signaling . Substrate binding induces important conformation changes, making it possible to bind and degrade larger substrates, such as insulin . Contributes to the regulation of peptide hormone signaling cascades and regulation of blood glucose homeostasis via its role in the degradation of insulin, glucagon and IAPP . Plays a role in the degradation and clearance of APP-derived amyloidogenic peptides that are secreted by neurons and microglia (Probable) . Degrades the natriuretic peptides ANP, BNP and CNP, inactivating their ability to raise intracellular cGMP .

### APPLICATION

To ensure optimal assay performance, AREX recommends conducting reagent titration tailored to each testing system for optimal detection results.

WB	1:1000 - 1:2000
----	-----------------

\*Results are sample-specific. Please refer to your local assay conditions and test parameters for reference.

### PRODUCT OVERVIEW

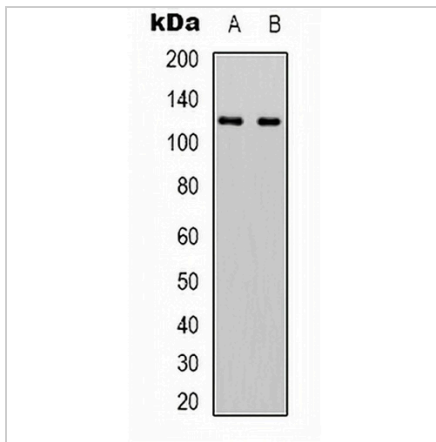
Description	Mouse monoclonal antibody to IDE
Specificity	Recognizes endogenous levels of IDE protein.
Antibody Type	Primary antibody
Immunogen	KLH-conjugated synthetic peptide encompassing a sequence of human IDE. The exact sequence is proprietary.
Purification	Affinity chromatography
Molecular Weight	Predicted: 117 kD; Observed: 117 kD
Form/Buffer	Liquid in 0.42% Potassium phosphate, 0.87% Sodium chloride, pH 7.3, 30% glycerol, and 0.01% sodium azide.
Alternative Names	Insulin-degrading enzyme; Abeta-degrading protease; Insulin protease; Insulinase; Insulysin
Gene Symbol	IDE
Entrez Gene	3416(Human)
SwissProt	P14735(Human)

\*AREX continuously optimizes our products. Webpage content may not reflect the latest updates. For inquiries, please contact [info@arexbio.com](mailto:info@arexbio.com) or your local distributor.

\*Clone Number, Reactivity, Source/Host and Clonality can be found in the product name and Key Features section above.

**DATASHEET****IDE Mouse Monoclonal Antibody(C2165)**

CAT. NO. AMA01777

**DATA**

Western blot analysis of IDE expression in HeLa (A), HepG2 (B) whole cell lysates.  
(Predicted band size: 117 kD; Observed band size: 117 kD)

**STORAGE**

Store at 4°C short term. For long term storage, store at -20°C, avoiding freeze/thaw cycles.

**NOTE**

For Research Use Only. Not for diagnostic, therapeutics, prophylactic or in vivo use.