

**DATASHEET**

**Lamin B1 Mouse Monoclonal Antibody(C2166)**

CAT. NO. AMA01778

**KEY FEATURES**

Target	Lamin B1	Source / Host	Mouse
Reactivity	Human	Clonality	Monoclonal
Applications	WB, IP	Conjugation	Unconjugated
Form / Buffer	Liquid in 0.42% Potassium phosphate, 0.87% Sodium chloride, pH 7.3, 30% glycerol, and 0.01% sodium azide.		Storage at-20°C

**BACKGROUND**

Lamins are intermediate filament proteins that assemble into a filamentous meshwork, and which constitute the major components of the nuclear lamina, a fibrous layer on the nucleoplasmic side of the inner nuclear membrane . Lamins provide a framework for the nuclear envelope, bridging the nuclear envelope and chromatin, thereby playing an important role in nuclear assembly, chromatin organization, nuclear membrane and telomere dynamics . The structural integrity of the lamina is strictly controlled by the cell cycle, as seen by the disintegration and formation of the nuclear envelope in prophase and telophase, respectively .

**APPLICATION**

To ensure optimal assay performance, AREX recommends conducting reagent titration tailored to each testing system for optimal detection results.

WB	1:2000 - 1:5000
IP	1:50 - 1:200

\*Results are sample-specific. Please refer to your local assay conditions and test parameters for reference.

**PRODUCT OVERVIEW**

Description	Mouse monoclonal antibody to Lamin B1
Specificity	Recognizes endogenous levels of Lamin B1 protein.
Antibody Type	Primary antibody
Immunogen	Recombinant protein corresponding to human Lamin B1.
Purification	Affinity chromatography
Molecular Weight	Predicted: 66 kD; Observed: 68 kD
Form/Buffer	Liquid in 0.42% Potassium phosphate, 0.87% Sodium chloride, pH 7.3, 30% glycerol, and 0.01% sodium azide.
Alternative Names	LMN2; LMNB; Lamin-B1
Gene Symbol	LMNB1
Entrez Gene	4001(Human); 16906(Mouse); 116685(Rat)
SwissProt	P20700(Human); P14733(Mouse); P70615(Rat)

\*AREX continuously optimizes our products. Webpage content may not reflect the latest updates. For inquiries, please contact [info@arexbio.com](mailto:info@arexbio.com) or your local distributor.

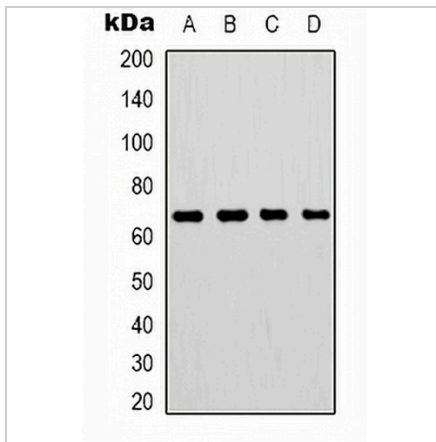
\*Clone Number, Reactivity, Source/Host and Clonality can be found in the product name and Key Features section above.

**DATASHEET**

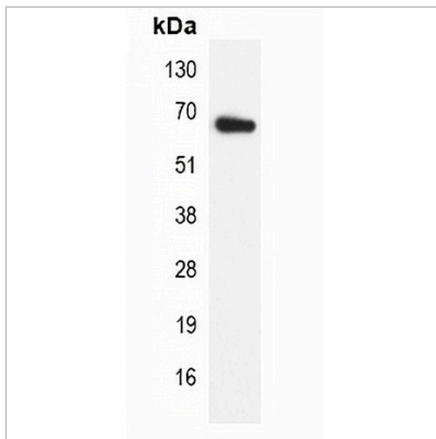
**Lamin B1 Mouse Monoclonal Antibody(C2166)**

CAT. NO. AMA01778

**DATA**



Western blot analysis of Lamin B1 expression in HepG2 (A), 293T (B), mouse brain (C), rat brain (D) whole cell lysates. (Predicted band size: 66 kD; Observed band size: 68 kD)



Immunoprecipitation of Lamin B1 from 0.5mg mouse brain whole cell extract lysate, using Anti-Lamin B1 Antibody.

**STORAGE**

Store at 4°C short term. For long term storage, store at -20°C, avoiding freeze/thaw cycles.

**NOTE**

For Research Use Only. Not for diagnostic, therapeutics, prophylactic or in vivo use.