

DATASHEET

XRCC4 Mouse Monoclonal Antibody(C2189)

CAT. NO. AMA01801

KEY FEATURES

Target	XRCC4	Source / Host	Mouse
Reactivity	Human	Clonality	Monoclonal
Applications	WB, IHC, IP	Conjugation	Unconjugated
Form / Buffer	Liquid in 0.42% Potassium phosphate, 0.87% Sodium chloride, pH 7.3, 30% glycerol, and 0.01% sodium azide.		Storage at-20°C

BACKGROUND

DNA non-homologous end joining (NHEJ) core factor, required for double-strand break repair and V(D)J recombination core factor, required for double-strand break repair and V(D)J recombination . Acts as a scaffold protein that regulates recruitment of other proteins to DNA double-strand breaks (DSBs) . Associates with NHEJ1/XLF to form alternating helical filaments that bridge DNA and act like a bandage, holding together the broken DNA until it is repaired . The XRCC4-NHEJ1/XLF subcomplex binds to the DNA fragments of a DSB in a highly diffusive manner and robustly bridges two independent DNA molecules, holding the broken DNA fragments in close proximity to one other . The mobility of the bridges ensures that the ends remain accessible for further processing by other repair factors .

APPLICATION

To ensure optimal assay performance, AREX recommends conducting reagent titration tailored to each testing system for optimal detection results.

WB	1:1000 - 1:2000
IHC	1:200 - 1:500
IP	1:100 - 1:200

*Results are sample-specific. Please refer to your local assay conditions and test parameters for reference.

PRODUCT OVERVIEW

Description	Mouse monoclonal antibody to XRCC4
Specificity	Recognizes endogenous levels of XRCC4 protein.
Antibody Type	Primary antibody
Immunogen	KLH-conjugated synthetic peptide encompassing a sequence of human XRCC4. The exact sequence is proprietary.
Purification	Affinity chromatography
Molecular Weight	Predicted: 38 kD; Observed: 38 kD
Form/Buffer	Liquid in 0.42% Potassium phosphate, 0.87% Sodium chloride, pH 7.3, 30% glycerol, and 0.01% sodium azide.
Alternative Names	DNA repair protein XRCC4; X-ray repair cross-complementing protein 4
Gene Symbol	XRCC4
Entrez Gene	7518(Human)
SwissProt	Q13426(Human)

*AREX continuously optimizes our products. Webpage content may not reflect the latest updates. For inquiries, please contact info@arexbio.com or your local distributor.

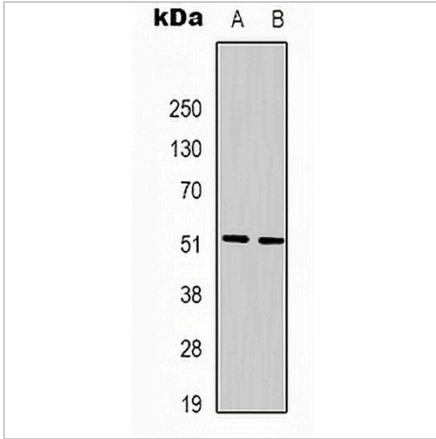
*Clone Number, Reactivity, Source/Host and Clonality can be found in the product name and Key Features section above.

DATASHEET

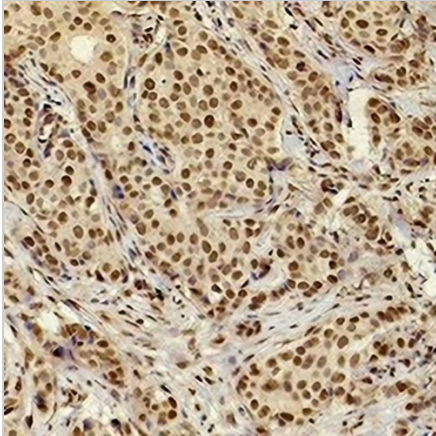
XRCC4 Mouse Monoclonal Antibody(C2189)

CAT. NO. AMA01801

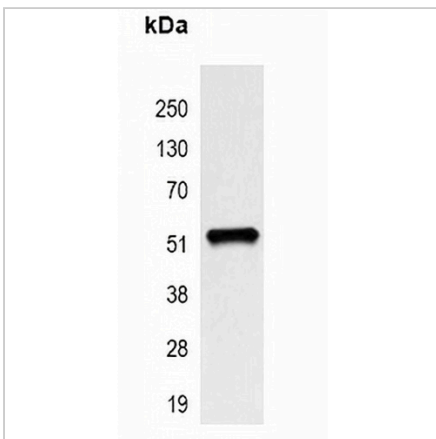
DATA



Western blot analysis of XRCC4 expression in HeLa (A), 293T (B) whole cell lysates. (Predicted band size: 38 kD; Observed band size: 38 kD)



Immunohistochemical analysis of XRCC4 staining in human breast cancer formalin fixed paraffin embedded tissue section. The section was pre-treated using heat mediated antigen retrieval with sodium citrate buffer (pH 6.0). The section was then incubated with the antibody at room temperature and detected using an HRP conjugated compact polymer system. DAB was used as the chromogen. The section was then counterstained with haematoxylin and mounted with DPX.



Immunoprecipitation of XRCC4 from 0.5mg HeLa whole cell extract lysate, using Anti-XRCC4 Antibody.

STORAGE

Store at 4°C short term. For long term storage, store at -20°C, avoiding freeze/thaw cycles.

NOTE

For Research Use Only. Not for diagnostic, therapeutics, prophylactic or in vivo use.