

DATASHEET

Von Hippel Lindau Mouse Monoclonal Antibody(C2237)

CAT. NO. AMA01849

KEY FEATURES

Target	Von Hippel Lindau	Source / Host	Mouse
Reactivity	Human	Clonality	Monoclonal
Applications	IHC	Conjugation	Unconjugated
Form / Buffer	Mouse IgG3. Liquid in PBS containing 50% glycerol, 0.2% BSA and 0.01% sodium azide.	Storage	at-20°C

BACKGROUND

Involved in the ubiquitination and subsequent proteasomal degradation via the von Hippel-Lindau ubiquitination complex . Seems to act as a target recruitment subunit in the E3 ubiquitin ligase complex and recruits hydroxylated hypoxia-inducible factor (HIF) under normoxic conditions . Involved in transcriptional repression through interaction with HIF1A, HIF1AN and histone deacetylases . Ubiquitinates, in an oxygen-responsive manner, ADRB2 . Acts as a negative regulator of mTORC1 by promoting ubiquitination and degradation of RPTOR .

APPLICATION

To ensure optimal assay performance, AREX recommends conducting reagent titration tailored to each testing system for optimal detection results.

IHC	1:100 - 1:300
-----	---------------

*Results are sample-specific. Please refer to your local assay conditions and test parameters for reference.

PRODUCT OVERVIEW

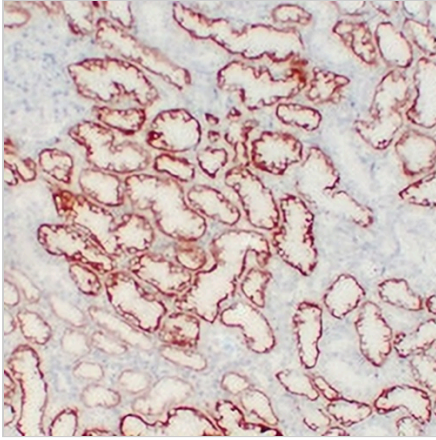
Description	Mouse monoclonal antibody to Von Hippel Lindau
Specificity	Recognizes endogenous levels of Von Hippel Lindau protein.
Antibody Type	Primary antibody
Immunogen	KLH-conjugated synthetic peptide encompassing a sequence within human Von Hippel Lindau. The exact sequence is proprietary.
Purification	The antibody was purified by immunogen affinity chromatography.
Form/Buffer	Mouse IgG3. Liquid in PBS containing 50% glycerol, 0.2% BSA and 0.01% sodium azide.
Alternative Names	Von Hippel-Lindau disease tumor suppressor; Protein G7; pVHL
Gene Symbol	VHL
Entrez Gene	7428(Human)
SwissProt	P40337(Human)

*AREX continuously optimizes our products. Webpage content may not reflect the latest updates. For inquiries, please contact info@arexbio.com or your local distributor.

*Clone Number, Reactivity, Source/Host and Clonality can be found in the product name and Key Features section above.

DATASHEET**Von Hippel Lindau Mouse Monoclonal Antibody(C2237)**

CAT. NO. AMA01849

DATA

Immunohistochemical analysis of Von Hippel Lindau staining in human kidney formalin fixed paraffin embedded tissue section. The section was pre-treated using heat mediated antigen retrieval with sodium citrate buffer (pH 6.0). The section was then incubated with the antibody at room temperature and detected using an HRP conjugated compact polymer system. DAB was used as the chromogen. The section was then counterstained with haematoxylin and mounted with DPX.

STORAGE

Store at 4°C short term. For long term storage, store at -20°C, avoiding freeze/thaw cycles.

NOTE

For Research Use Only. Not for diagnostic, therapeutics, prophylactic or in vivo use.