

DATASHEET
Claudin 3 Mouse Monoclonal Antibody(C2270)
CAT. NO. AMA01882
KEY FEATURES

Target	Claudin 3	Source / Host	Mouse
Reactivity	Human	Clonality	Monoclonal
Applications	WB, IHC	Conjugation	Unconjugated
Form / Buffer	Mouse IgG1. Liquid in PBS containing 50% glycerol, 0.2% BSA and 0.01% sodium azide.	Storage	at-20°C

BACKGROUND

Barrier-forming claudin. Plays a major role in tight junction-specific obliteration of the intercellular space, through calcium-independent cell-adhesion activity.

APPLICATION

To ensure optimal assay performance, AREX recommends conducting reagent titration tailored to each testing system for optimal detection results.

WB	1:500 - 1:1000
IHC	1:100 - 1:300

*Results are sample-specific. Please refer to your local assay conditions and test parameters for reference.

PRODUCT OVERVIEW

Description	Mouse monoclonal antibody to Claudin 3
Specificity	Recognizes endogenous levels of Claudin 3 protein.
Antibody Type	Primary antibody
Immunogen	KLH-conjugated synthetic peptide encompassing a sequence within human Claudin 3. The exact sequence is proprietary.
Purification	The antibody was purified by immunogen affinity chromatography.
Molecular Weight	Predicted: 23 kD; Observed: 23 kD
Form/Buffer	Mouse IgG1. Liquid in PBS containing 50% glycerol, 0.2% BSA and 0.01% sodium azide.
Alternative Names	C7orf1; CPETR2; Claudin-3; Clostridium perfringens enterotoxin receptor 2; CPE-R 2; CPE-receptor 2; Rat ventral prostate.1 protein homolog; hRVP1
Gene Symbol	CLDN3
Entrez Gene	1365(Human)
SwissProt	O15551(Human)

*AREX continuously optimizes our products. Webpage content may not reflect the latest updates. For inquiries, please contact info@arexbio.com or your local distributor.

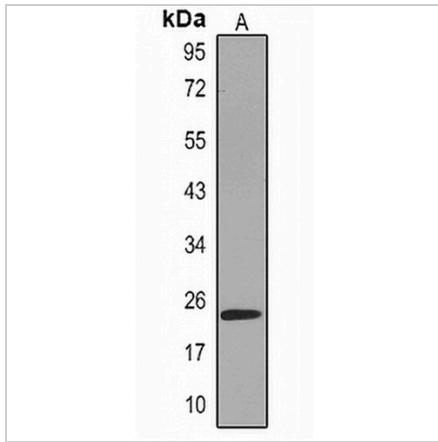
*Clone Number, Reactivity, Source/Host and Clonality can be found in the product name and Key Features section above.

DATASHEET

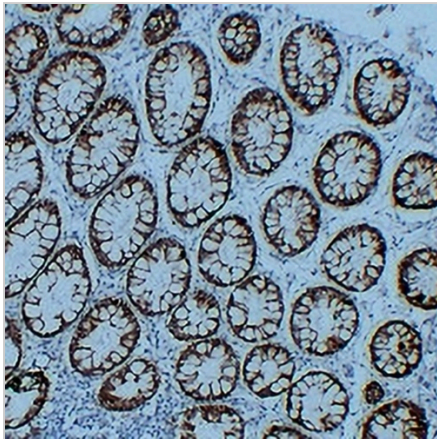
Claudin 3 Mouse Monoclonal Antibody(C2270)

CAT. NO. AMA01882

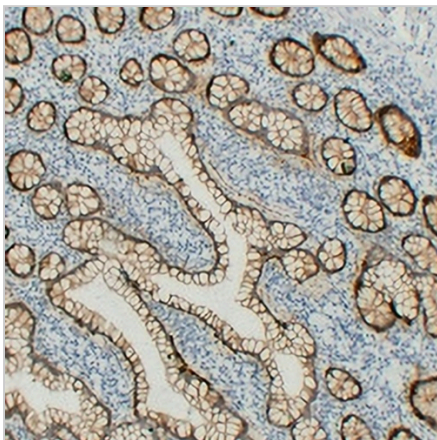
DATA



Western blot analysis of Claudin 3 expression in MCF7 (A) whole cell lysates. (Predicted band size: 23 kD; Observed band size: 23 kD)



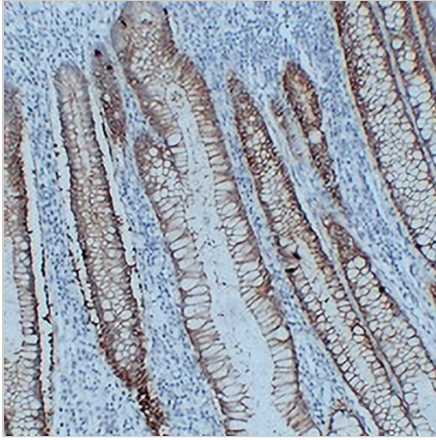
Immunohistochemical analysis of Claudin 3 staining in human colon formalin fixed paraffin embedded tissue section. The section was pre-treated using heat mediated antigen retrieval with sodium citrate buffer (pH 6.0). The section was then incubated with the antibody at room temperature and detected using an HRP conjugated compact polymer system. DAB was used as the chromogen. The section was then counterstained with haematoxylin and mounted with DPX.



Immunohistochemical analysis of Claudin 3 staining in human intestine formalin fixed paraffin embedded tissue section. The section was pre-treated using heat mediated antigen retrieval with sodium citrate buffer (pH 6.0). The section was then incubated with the antibody at room temperature and detected using an HRP conjugated compact polymer system. DAB was used as the chromogen. The section was then counterstained with haematoxylin and mounted with DPX.

DATASHEET**Claudin 3 Mouse Monoclonal Antibody(C2270)**

CAT. NO. AMA01882

DATA (CONTINUED)

Immunohistochemical analysis of Claudin 3 staining in human rectum formalin fixed paraffin embedded tissue section. The section was pre-treated using heat mediated antigen retrieval with sodium citrate buffer (pH 6.0). The section was then incubated with the antibody at room temperature and detected using an HRP conjugated compact polymer system. DAB was used as the chromogen. The section was then counterstained with haematoxylin and mounted with DPX.

STORAGE

Store at 4°C short term. For long term storage, store at -20°C, avoiding freeze/thaw cycles.

NOTE

For Research Use Only. Not for diagnostic, therapeutics, prophylactic or in vivo use.