

## DATASHEET

# ACP5 Mouse Monoclonal Antibody(C2308)

CAT. NO. AMA01920

### KEY FEATURES

Target	ACP5	Source / Host	Mouse
Reactivity	Human	Clonality	Monoclonal
Applications	IHC	Conjugation	Unconjugated
Form / Buffer	Mouse IgG2a. Liquid in PBS containing 50% glycerol, 0.2% BSA and 0.01% sodium azide.	Storage	at-20°C

### BACKGROUND

Involved in osteopontin/bone sialoprotein dephosphorylation. Its expression seems to increase in certain pathological states such as Gaucher and Hodgkin diseases, the hairy cell, the B-cell, and the T-cell leukemias.

### APPLICATION

To ensure optimal assay performance, AREX recommends conducting reagent titration tailored to each testing system for optimal detection results.

IHC	1:100 - 1:300
-----	---------------

\*Results are sample-specific. Please refer to your local assay conditions and test parameters for reference.

### PRODUCT OVERVIEW

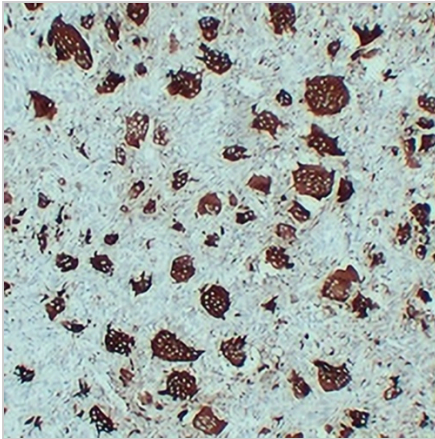
Description	Mouse monoclonal antibody to ACP5
Specificity	Recognizes endogenous levels of ACP5 protein.
Antibody Type	Primary antibody
Immunogen	KLH-conjugated synthetic peptide encompassing a sequence within human ACP5. The exact sequence is proprietary.
Purification	The antibody was purified by immunogen affinity chromatography.
Form/Buffer	Mouse IgG2a. Liquid in PBS containing 50% glycerol, 0.2% BSA and 0.01% sodium azide.
Alternative Names	Tartrate-resistant acid phosphatase type 5; TR-AP; Tartrate-resistant acid ATPase; TrATPase; Type 5 acid phosphatase
Gene Symbol	ACP5
Entrez Gene	54(Human)
SwissProt	P13686(Human)

\*AREX continuously optimizes our products. Webpage content may not reflect the latest updates. For inquiries, please contact [info@arexbio.com](mailto:info@arexbio.com) or your local distributor.

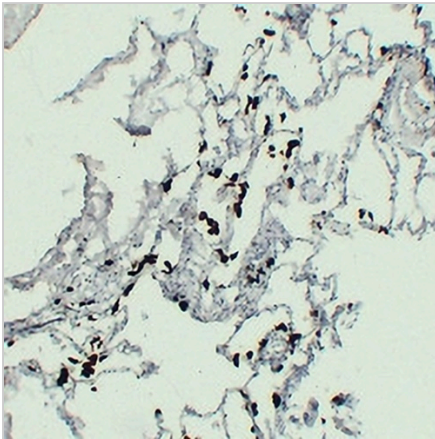
\*Clone Number, Reactivity, Source/Host and Clonality can be found in the product name and Key Features section above.

**DATASHEET****ACP5 Mouse Monoclonal Antibody(C2308)**

CAT. NO. AMA01920

**DATA**

Immunohistochemical analysis of ACP5 staining in human gaint cell tumor formalin fixed paraffin embedded tissue section. The section was pre-treated using heat mediated antigen retrieval with sodium citrate buffer (pH 6.0). The section was then incubated with the antibody at room temperature and detected using an HRP conjugated compact polymer system. DAB was used as the chromogen. The section was then counterstained with haematoxylin and mounted with DPX.



Immunohistochemical analysis of ACP5 staining in human lung formalin fixed paraffin embedded tissue section. The section was pre-treated using heat mediated antigen retrieval with sodium citrate buffer (pH 6.0). The section was then incubated with the antibody at room temperature and detected using an HRP conjugated compact polymer system. DAB was used as the chromogen. The section was then counterstained with haematoxylin and mounted with DPX.

**STORAGE**

Store at 4°C short term. For long term storage, store at -20°C, avoiding freeze/thaw cycles.

**NOTE**

For Research Use Only. Not for diagnostic, therapeutics, prophylactic or in vivo use.