

**DATASHEET**

**CDX2 Mouse Monoclonal Antibody(C2319)**

CAT. NO. AMA01931

**KEY FEATURES**

Target	CDX2	Source / Host	Mouse
Reactivity	Human	Clonality	Monoclonal
Applications	IHC	Conjugation	Unconjugated
Form / Buffer	Mouse IgG1. Liquid in PBS containing 50% glycerol, 0.2% BSA and 0.01% sodium azide.	Storage	at-20°C

**BACKGROUND**

Transcription factor which regulates the transcription of multiple genes expressed in the intestinal epithelium . Binds to the promoter of the intestinal sucrase-isomaltase SI and activates SI transcription . Binds to the DNA sequence 5'-ATAAAAATTAT-3' in the promoter region of VDR and activates VDR transcription . Binds to and activates transcription of LPH . Activates transcription of CLDN2 and intestinal mucin MUC2 . Binds to the 5'-AATTTTTTACAACACCT-3' DNA sequence in the promoter region of CA1 and activates CA1 transcription . Important in broad range of functions from early differentiation to maintenance of the intestinal epithelial lining of both the small and large intestine. Binds preferentially to methylated DNA .

**APPLICATION**

To ensure optimal assay performance, AREX recommends conducting reagent titration tailored to each testing system for optimal detection results.

IHC	1:100 - 1:300
-----	---------------

\*Results are sample-specific. Please refer to your local assay conditions and test parameters for reference.

**PRODUCT OVERVIEW**

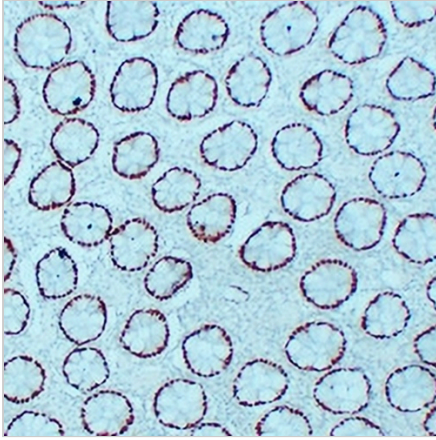
Description	Mouse monoclonal antibody to CDX2
Specificity	Recognizes endogenous levels of CDX2 protein.
Antibody Type	Primary antibody
Immunogen	KLH-conjugated synthetic peptide encompassing a sequence within human CDX2. The exact sequence is proprietary.
Purification	The antibody was purified by immunogen affinity chromatography.
Form/Buffer	Mouse IgG1. Liquid in PBS containing 50% glycerol, 0.2% BSA and 0.01% sodium azide.
Alternative Names	CDX3; Homeobox protein CDX-2; CDX-3; Caudal-type homeobox protein 2
Gene Symbol	CDX2
Entrez Gene	1045(Human)
SwissProt	Q99626(Human)

\*AREX continuously optimizes our products. Webpage content may not reflect the latest updates. For inquiries, please contact [info@arexbio.com](mailto:info@arexbio.com) or your local distributor.

\*Clone Number, Reactivity, Source/Host and Clonality can be found in the product name and Key Features section above.

**DATASHEET****CDX2 Mouse Monoclonal Antibody(C2319)**

CAT. NO. AMA01931

**DATA**

Immunohistochemical analysis of CDX2 staining in human colon formalin fixed paraffin embedded tissue section. The section was pre-treated using heat mediated antigen retrieval with sodium citrate buffer (pH 6.0). The section was then incubated with the antibody at room temperature and detected using an HRP conjugated compact polymer system. DAB was used as the chromogen. The section was then counterstained with haematoxylin and mounted with DPX.

**STORAGE**

Store at 4°C short term. For long term storage, store at -20°C, avoiding freeze/thaw cycles.

**NOTE**

For Research Use Only. Not for diagnostic, therapeutics, prophylactic or in vivo use.