

DATASHEET

PTH Mouse Monoclonal Antibody(C2327)

CAT. NO. AMA01939

KEY FEATURES

Target	PTH	Source / Host	Mouse
Reactivity	Human	Clonality	Monoclonal
Applications	IHC	Conjugation	Unconjugated
Form / Buffer	Mouse IgG. Liquid in PBS containing 50% glycerol, 0.2% BSA and 0.01% sodium azide.	Storage	at-20°C

BACKGROUND

Parathyroid hormone elevates calcium level by dissolving the salts in bone and preventing their renal excretion . Acts by binding to its receptor, PTH1R, activating G protein-coupled receptor signaling . Stimulates [1-14C]-2-deoxy-D-glucose (2DG) transport and glycogen synthesis in osteoblastic cells .

APPLICATION

To ensure optimal assay performance, AREX recommends conducting reagent titration tailored to each testing system for optimal detection results.

IHC	1:100 - 1:300
-----	---------------

*Results are sample-specific. Please refer to your local assay conditions and test parameters for reference.

PRODUCT OVERVIEW

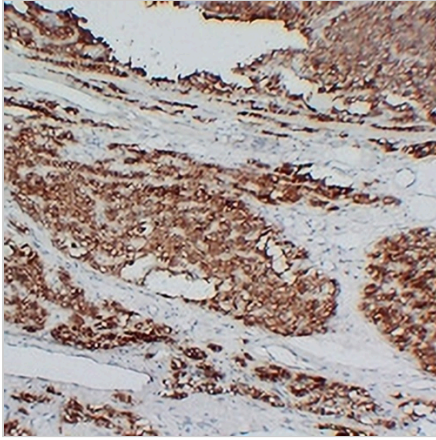
Description	Mouse monoclonal antibody to PTH
Specificity	Recognizes endogenous levels of PTH protein.
Antibody Type	Primary antibody
Immunogen	KLH-conjugated synthetic peptide encompassing a sequence within human PTH. The exact sequence is proprietary.
Purification	The antibody was purified by immunogen affinity chromatography.
Form/Buffer	Mouse IgG. Liquid in PBS containing 50% glycerol, 0.2% BSA and 0.01% sodium azide.
Alternative Names	Parathyroid hormone; PTH; Parathormone; Parathyrin
Gene Symbol	PTH
Entrez Gene	5741(Human)
SwissProt	P01270(Human)

*AREX continuously optimizes our products. Webpage content may not reflect the latest updates. For inquiries, please contact info@arexbio.com or your local distributor.

*Clone Number, Reactivity, Source/Host and Clonality can be found in the product name and Key Features section above.

DATASHEET**PTH Mouse Monoclonal Antibody(C2327)**

CAT. NO. AMA01939

DATA

Immunohistochemical analysis of PTH staining in human parathyroidoma formalin fixed paraffin embedded tissue section. The section was pre-treated using heat mediated antigen retrieval with sodium citrate buffer (pH 6.0). The section was then incubated with the antibody at room temperature and detected using an HRP conjugated compact polymer system. DAB was used as the chromogen. The section was then counterstained with haematoxylin and mounted with DPX.

STORAGE

Store at 4°C short term. For long term storage, store at -20°C, avoiding freeze/thaw cycles.

NOTE

For Research Use Only. Not for diagnostic, therapeutics, prophylactic or in vivo use.