

DATASHEET

IGF2 Mouse Monoclonal Antibody(C2337)

CAT. NO. AMA01949

KEY FEATURES

Target	IGF2	Source / Host	Mouse
Reactivity	Human	Clonality	Monoclonal
Applications	IHC	Conjugation	Unconjugated
Form / Buffer	Mouse IgG2b. Liquid in PBS containing 50% glycerol, 0.2% BSA and 0.01% sodium azide.	Storage	at-20°C

BACKGROUND

The insulin-like growth factors possess growth-promoting activity . Major fetal growth hormone in mammals. Plays a key role in regulating fetoplacental development. IGF2 is influenced by placental lactogen. Also involved in tissue differentiation. In adults, involved in glucose metabolism in adipose tissue, skeletal muscle and liver (Probable). Acts as a ligand for integrin which is required for IGF2 signaling . Acts as a ligand for integrin which is required for IGF2 signaling . Positively regulates myogenic transcription factor MYOD1 function by facilitating the recruitment of transcriptional coactivators, thereby controlling muscle terminal differentiation . Inhibits myoblast differentiation and modulates metabolism via increasing the mitochondrial respiration rate .

APPLICATION

To ensure optimal assay performance, AREX recommends conducting reagent titration tailored to each testing system for optimal detection results.

IHC	1:100 - 1:300
-----	---------------

*Results are sample-specific. Please refer to your local assay conditions and test parameters for reference.

PRODUCT OVERVIEW

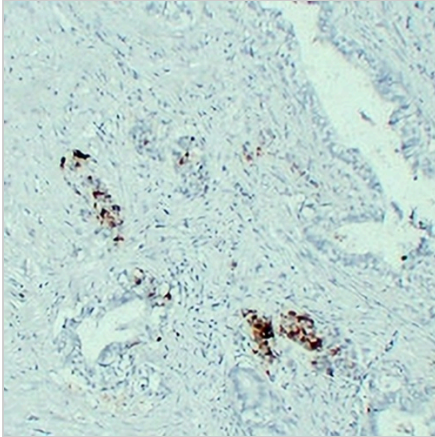
Description	Mouse monoclonal antibody to IGF2
Specificity	Recognizes endogenous levels of IGF2 protein.
Antibody Type	Primary antibody
Immunogen	KLH-conjugated synthetic peptide encompassing a sequence within human IGF2. The exact sequence is proprietary.
Purification	The antibody was purified by immunogen affinity chromatography.
Form/Buffer	Mouse IgG2b. Liquid in PBS containing 50% glycerol, 0.2% BSA and 0.01% sodium azide.
Alternative Names	Insulin-like growth factor II; IGF-II; Somatomedin-A
Gene Symbol	IGF2
Entrez Gene	3481(Human)
SwissProt	P01344(Human)

*AREX continuously optimizes our products. Webpage content may not reflect the latest updates. For inquiries, please contact info@arexbio.com or your local distributor.

*Clone Number, Reactivity, Source/Host and Clonality can be found in the product name and Key Features section above.

DATASHEET**IGF2 Mouse Monoclonal Antibody(C2337)**

CAT. NO. AMA01949

DATA

Immunohistochemical analysis of IGF2 staining in human pancreatic carcinoma formalin fixed paraffin embedded tissue section. The section was pre-treated using heat mediated antigen retrieval with sodium citrate buffer (pH 6.0). The section was then incubated with the antibody at room temperature and detected using an HRP conjugated compact polymer system. DAB was used as the chromogen. The section was then counterstained with haematoxylin and mounted with DPX.

STORAGE

Store at 4°C short term. For long term storage, store at -20°C, avoiding freeze/thaw cycles.

NOTE

For Research Use Only. Not for diagnostic, therapeutics, prophylactic or in vivo use.