

**DATASHEET**

**Thyrotropin beta Mouse Monoclonal Antibody(C2339)**

CAT. NO. AMA01951

**KEY FEATURES**

|               |   |               |              |
|---------------|---|---------------|--------------|
| Target        | Thyrotropin beta  | Source / Host | Mouse        |
| Reactivity    | Human   | Clonality     | Monoclonal   |
| Applications  | IHC   | Conjugation   | Unconjugated |
| Form / Buffer | Mouse IgG1. Liquid in PBS containing 50% glycerol, 0.2% BSA and 0.01% sodium azide. | Storage       | at-20°C      |

**BACKGROUND**

Indispensable for the control of thyroid structure and metabolism.

**APPLICATION**

To ensure optimal assay performance, AREX recommends conducting reagent titration tailored to each testing system for optimal detection results.

|     |               |
|-----|---------------|
| IHC | 1:100 - 1:300 |
|-----|---------------|

\*Results are sample-specific. Please refer to your local assay conditions and test parameters for reference.

**PRODUCT OVERVIEW**

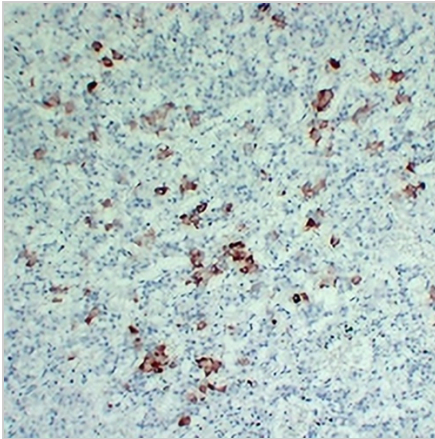
|                   |   |
|-------------------|---|
| Description       | Mouse monoclonal antibody to Thyrotropin beta   |
| Specificity       | Recognizes endogenous levels of Thyrotropin beta protein.   |
| Antibody Type     | Primary antibody  |
| Immunogen         | KLH-conjugated synthetic peptide encompassing a sequence within human Thyrotropin beta. The exact sequence is proprietary.    |
| Purification      | The antibody was purified by immunogen affinity chromatography.   |
| Form/Buffer       | Mouse IgG1. Liquid in PBS containing 50% glycerol, 0.2% BSA and 0.01% sodium azide.   |
| Alternative Names | Thyrotropin subunit beta; Thyroid-stimulating hormone subunit beta; TSH-B; TSH-beta; Thyrotropin beta chain; Thyrotropin alfa |
| Gene Symbol       | TSHB  |
| Entrez Gene       | 7252(Human)   |
| SwissProt         | P01222(Human)   |

\*AREX continuously optimizes our products. Webpage content may not reflect the latest updates. For inquiries, please contact [info@arexbio.com](mailto:info@arexbio.com) or your local distributor.

\*Clone Number, Reactivity, Source/Host and Clonality can be found in the product name and Key Features section above.

**DATASHEET****Thyrotropin beta Mouse Monoclonal Antibody(C2339)**

CAT. NO. AMA01951

**DATA**

Immunohistochemical analysis of Thyrotropin beta staining in human pituitary adenocarcinoma formalin fixed paraffin embedded tissue section. The section was pre-treated using heat mediated antigen retrieval with sodium citrate buffer (pH 6.0). The section was then incubated with the antibody at room temperature and detected using an HRP conjugated compact polymer system. DAB was used as the chromogen. The section was then counterstained with haematoxylin and mounted with DPX.

**STORAGE**

Store at 4°C short term. For long term storage, store at -20°C, avoiding freeze/thaw cycles.

**NOTE**

For Research Use Only. Not for diagnostic, therapeutics, prophylactic or in vivo use.