

**DATASHEET**

**CD105 Mouse Monoclonal Antibody(C2352)**

CAT. NO. AMA01964

**KEY FEATURES**

|               |                                                                                      |               |              |
|---------------|--------------------------------------------------------------------------------------|---------------|--------------|
| Target        | CD105                                                                                | Source / Host | Mouse        |
| Reactivity    | Human                                                                                | Clonality     | Monoclonal   |
| Applications  | IHC                                                                                  | Conjugation   | Unconjugated |
| Form / Buffer | Mouse IgG2a. Liquid in PBS containing 50% glycerol, 0.2% BSA and 0.01% sodium azide. | Storage       | at-20°C      |

**BACKGROUND**

Vascular endothelium glycoprotein that plays an important role in the regulation of angiogenesis . Required for normal structure and integrity of adult vasculature . Regulates the migration of vascular endothelial cells . Required for normal extraembryonic angiogenesis and for embryonic heart development . May regulate endothelial cell shape changes in response to blood flow, which drive vascular remodeling and establishment of normal vascular morphology during angiogenesis . May play a critical role in the binding of endothelial cells to integrins and/or other RGD receptors . Acts as a TGF-beta coreceptor and is involved in the TGF-beta/BMP signaling cascade that ultimately leads to the activation of SMAD transcription factors .

**APPLICATION**

To ensure optimal assay performance, AREX recommends conducting reagent titration tailored to each testing system for optimal detection results.

|     |               |
|-----|---------------|
| IHC | 1:100 - 1:300 |
|-----|---------------|

\*Results are sample-specific. Please refer to your local assay conditions and test parameters for reference.

**PRODUCT OVERVIEW**

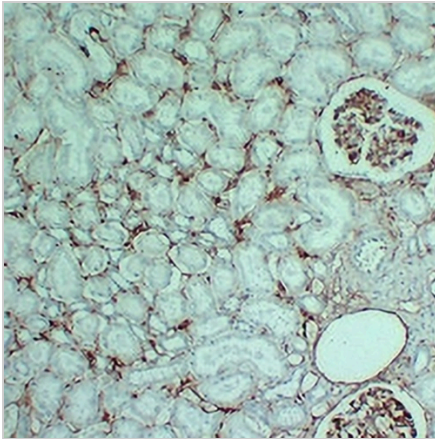
|                   |                                                                                                                 |
|-------------------|-----------------------------------------------------------------------------------------------------------------|
| Description       | Mouse monoclonal antibody to CD105                                                                              |
| Specificity       | Recognizes endogenous levels of CD105 protein.                                                                  |
| Antibody Type     | Primary antibody                                                                                                |
| Immunogen         | KLH-conjugated synthetic peptide encompassing a sequence within human CD105. The exact sequence is proprietary. |
| Purification      | The antibody was purified by immunogen affinity chromatography.                                                 |
| Form/Buffer       | Mouse IgG2a. Liquid in PBS containing 50% glycerol, 0.2% BSA and 0.01% sodium azide.                            |
| Alternative Names | END; Endoglin; CD105                                                                                            |
| Gene Symbol       | ENG                                                                                                             |
| Entrez Gene       | 2022(Human)                                                                                                     |
| SwissProt         | P17813(Human)                                                                                                   |

\*AREX continuously optimizes our products. Webpage content may not reflect the latest updates. For inquiries, please contact [info@arexbio.com](mailto:info@arexbio.com) or your local distributor.

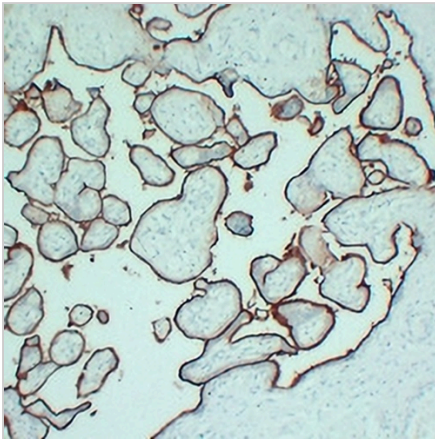
\*Clone Number, Reactivity, Source/Host and Clonality can be found in the product name and Key Features section above.

**DATASHEET****CD105 Mouse Monoclonal Antibody(C2352)**

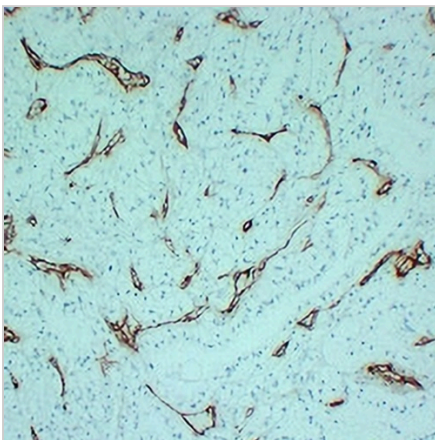
CAT. NO. AMA01964

**DATA**

Immunohistochemical analysis of CD105 staining in human kidney formalin fixed paraffin embedded tissue section. The section was pre-treated using heat mediated antigen retrieval with sodium citrate buffer (pH 6.0). The section was then incubated with the antibody at room temperature and detected using an HRP conjugated compact polymer system. DAB was used as the chromogen. The section was then counterstained with haematoxylin and mounted with DPX.



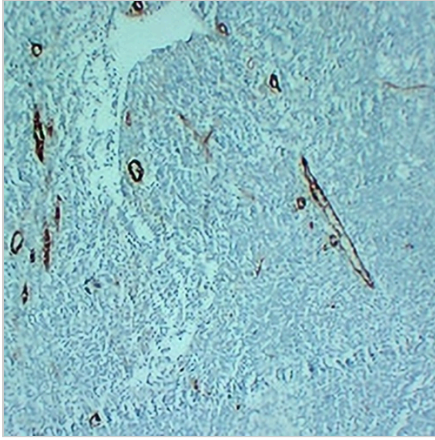
Immunohistochemical analysis of CD105 staining in human placenta formalin fixed paraffin embedded tissue section. The section was pre-treated using heat mediated antigen retrieval with sodium citrate buffer (pH 6.0). The section was then incubated with the antibody at room temperature and detected using an HRP conjugated compact polymer system. DAB was used as the chromogen. The section was then counterstained with haematoxylin and mounted with DPX.



Immunohistochemical analysis of CD105 staining in human renal clear cell carcinoma formalin fixed paraffin embedded tissue section. The section was pre-treated using heat mediated antigen retrieval with sodium citrate buffer (pH 6.0). The section was then incubated with the antibody at room temperature and detected using an HRP conjugated compact polymer system. DAB was used as the chromogen. The section was then counterstained with haematoxylin and mounted with DPX.

**DATASHEET****CD105 Mouse Monoclonal Antibody(C2352)**

CAT. NO. AMA01964

**DATA (CONTINUED)**

Immunohistochemical analysis of CD105 staining in human tonsil formalin fixed paraffin embedded tissue section. The section was pre-treated using heat mediated antigen retrieval with sodium citrate buffer (pH 6.0). The section was then incubated with the antibody at room temperature and detected using an HRP conjugated compact polymer system. DAB was used as the chromogen. The section was then counterstained with haematoxylin and mounted with DPX.

**STORAGE**

Store at 4°C short term. For long term storage, store at -20°C, avoiding freeze/thaw cycles.

**NOTE**

For Research Use Only. Not for diagnostic, therapeutics, prophylactic or in vivo use.