

DATASHEET

S100-A1 Mouse Monoclonal Antibody(C2369)

CAT. NO. AMA01981

KEY FEATURES

| | | | |
|---------------|---|---------------|--------------|
| Target | S100-A1 | Source / Host | Mouse |
| Reactivity | Human | Clonality | Monoclonal |
| Applications | IHC, IF/ICC | Conjugation | Unconjugated |
| Form / Buffer | Mouse IgG1. Liquid in PBS containing 50% glycerol, 0.2% BSA and 0.01% sodium azide. | Storage | at-20°C |

BACKGROUND

Small calcium binding protein that plays important roles in several biological processes such as Ca(2+) homeostasis, chondrocyte biology and cardiomyocyte regulation homeostasis, chondrocyte biology and cardiomyocyte regulation . In response to an increase in intracellular Ca(2+) levels, binds calcium which triggers conformational changes . These changes allow interactions with specific target proteins and modulate their activity . Regulates a network in cardiomyocytes controlling sarcoplasmic reticulum Ca(2+) cycling and mitochondrial function through interaction with the ryanodine receptors RYR1 and RYR2, sarcoplasmic reticulum Ca(2+)-ATPase/ATP2A2 and mitochondrial F1-ATPase .

APPLICATION

To ensure optimal assay performance, AREX recommends conducting reagent titration tailored to each testing system for optimal detection results.

| | |
|--------|---------------|
| IHC | 1:100 - 1:300 |
| IF/ICC | 1:100 - 1:500 |

*Results are sample-specific. Please refer to your local assay conditions and test parameters for reference.

PRODUCT OVERVIEW

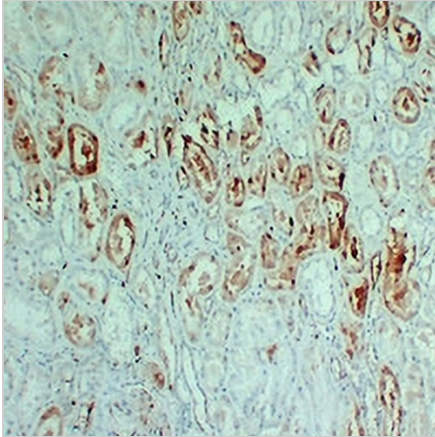
| | |
|-------------------|---|
| Description | Mouse monoclonal antibody to S100-A1 |
| Specificity | Recognizes endogenous levels of S100-A1 protein. |
| Antibody Type | Primary antibody |
| Immunogen | KLH-conjugated synthetic peptide encompassing a sequence within human S100-A1. The exact sequence is proprietary. |
| Purification | The antibody was purified by immunogen affinity chromatography. |
| Form/Buffer | Mouse IgG1. Liquid in PBS containing 50% glycerol, 0.2% BSA and 0.01% sodium azide. |
| Alternative Names | S100A; Protein S100-A1; S-100 protein alpha chain; S-100 protein subunit alpha; S100 calcium-binding protein A1 |
| Gene Symbol | S100A1 |
| Entrez Gene | 6271(Human) |
| SwissProt | P23297(Human) |

*AREX continuously optimizes our products. Webpage content may not reflect the latest updates. For inquiries, please contact info@arexbio.com or your local distributor.

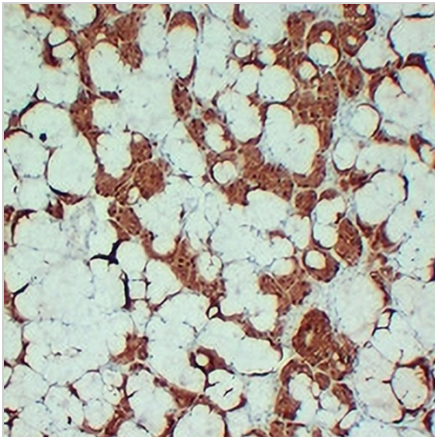
*Clone Number, Reactivity, Source/Host and Clonality can be found in the product name and Key Features section above.

DATASHEET**S100-A1 Mouse Monoclonal Antibody(C2369)**

CAT. NO. AMA01981

DATA

Immunohistochemical analysis of S100-A1 staining in human kidney formalin fixed paraffin embedded tissue section. The section was pre-treated using heat mediated antigen retrieval with sodium citrate buffer (pH 6.0). The section was then incubated with the antibody at room temperature and detected using an HRP conjugated compact polymer system. DAB was used as the chromogen. The section was then counterstained with haematoxylin and mounted with DPX.



Immunohistochemical analysis of S100-A1 staining in human salivary gland formalin fixed paraffin embedded tissue section. The section was pre-treated using heat mediated antigen retrieval with sodium citrate buffer (pH 6.0). The section was then incubated with the antibody at room temperature and detected using an HRP conjugated compact polymer system. DAB was used as the chromogen. The section was then counterstained with haematoxylin and mounted with DPX.

STORAGE

Store at 4°C short term. For long term storage, store at -20°C, avoiding freeze/thaw cycles.

NOTE

For Research Use Only. Not for diagnostic, therapeutics, prophylactic or in vivo use.