

DATASHEET

Topoisomerase 2 alpha Mouse Monoclonal Antibody(C2371)

CAT. NO. AMA01983

KEY FEATURES

Target	Topoisomerase 2 alpha	Source / Host	Mouse
Reactivity	Human	Clonality	Monoclonal
Applications	WB, IHC, IF/ICC	Conjugation	Unconjugated
Form / Buffer	Mouse IgG1. Liquid in PBS containing 50% glycerol, 0.2% BSA and 0.01% sodium azide.	Storage	at-20°C

BACKGROUND

Key decatenating enzyme that alters DNA topology by binding to two double-stranded DNA molecules, generating a double-stranded break in one of the strands, passing the intact strand through the broken strand, and religating the broken strand . May play a role in regulating the period length of BMAL1 transcriptional oscillation .

APPLICATION

To ensure optimal assay performance, AREX recommends conducting reagent titration tailored to each testing system for optimal detection results.

WB	1:500 - 1:1000
IHC	1:100 - 1:300
IF/ICC	1:100 - 1:500

*Results are sample-specific. Please refer to your local assay conditions and test parameters for reference.

PRODUCT OVERVIEW

Description	Mouse monoclonal antibody to Topoisomerase 2 alpha
Specificity	Recognizes endogenous levels of Topoisomerase 2 alpha protein.
Antibody Type	Primary antibody
Immunogen	KLH-conjugated synthetic peptide encompassing a sequence within human Topoisomerase 2 alpha. The exact sequence is proprietary.
Purification	The antibody was purified by immunogen affinity chromatography.
Molecular Weight	Predicted: 174 kD; Observed: 174 kD
Form/Buffer	Mouse IgG1. Liquid in PBS containing 50% glycerol, 0.2% BSA and 0.01% sodium azide.
Alternative Names	TOP2; DNA topoisomerase 2-alpha; DNA topoisomerase II alpha isozyme
Gene Symbol	TOP2A
Entrez Gene	7153(Human)
SwissProt	P11388(Human)

*AREX continuously optimizes our products. Webpage content may not reflect the latest updates. For inquiries, please contact info@arexbio.com or your local distributor.

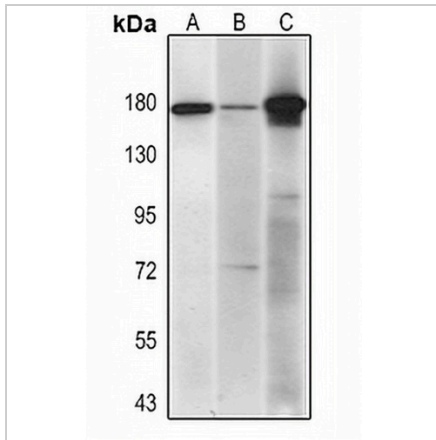
*Clone Number, Reactivity, Source/Host and Clonality can be found in the product name and Key Features section above.

DATASHEET

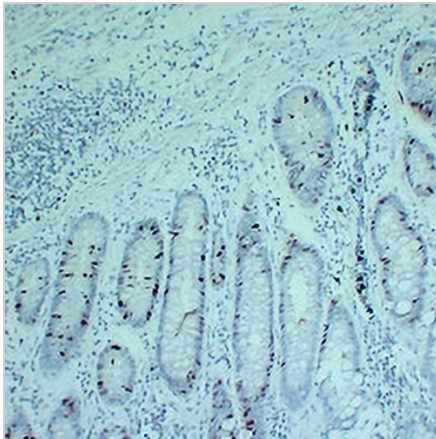
Topoisomerase 2 alpha Mouse Monoclonal Antibody(C2371)

CAT. NO. AMA01983

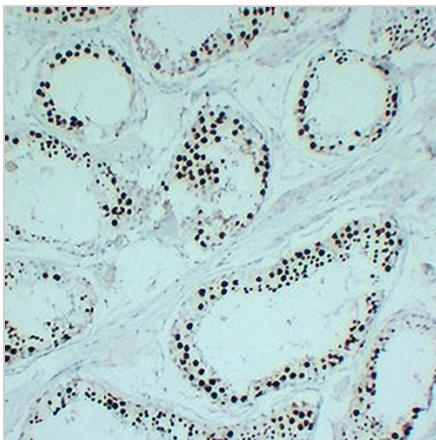
DATA



Western blot analysis of Topoisomerase 2 alpha expression in HeLa (A), HepG2 (B), K562 (C) whole cell lysates. (Predicted band size: 174 kD; Observed band size: 174 kD)



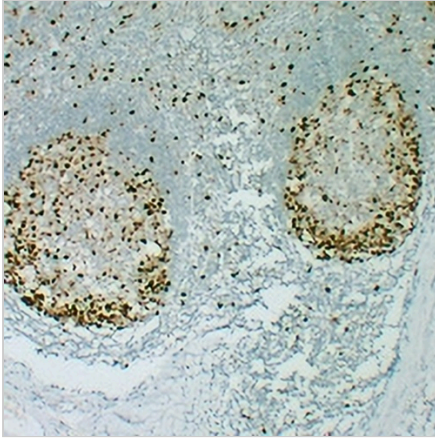
Immunohistochemical analysis of Topoisomerase 2 alpha staining in human colon carcinoma formalin fixed paraffin embedded tissue section. The section was pre-treated using heat mediated antigen retrieval with sodium citrate buffer (pH 6.0). The section was then incubated with the antibody at room temperature and detected using an HRP conjugated compact polymer system. DAB was used as the chromogen. The section was then counterstained with haematoxylin and mounted with DPX.



Immunohistochemical analysis of Topoisomerase 2 alpha staining in human testis formalin fixed paraffin embedded tissue section. The section was pre-treated using heat mediated antigen retrieval with sodium citrate buffer (pH 6.0). The section was then incubated with the antibody at room temperature and detected using an HRP conjugated compact polymer system. DAB was used as the chromogen. The section was then counterstained with haematoxylin and mounted with DPX.

DATASHEET**Topoisomerase 2 alpha Mouse Monoclonal Antibody(C2371)**

CAT. NO. AMA01983

DATA (CONTINUED)

Immunohistochemical analysis of Topoisomerase 2 alpha staining in human tonsil formalin fixed paraffin embedded tissue section. The section was pre-treated using heat mediated antigen retrieval with sodium citrate buffer (pH 6.0). The section was then incubated with the antibody at room temperature and detected using an HRP conjugated compact polymer system. DAB was used as the chromogen. The section was then counterstained with haematoxylin and mounted with DPX.

STORAGE

Store at 4°C short term. For long term storage, store at -20°C, avoiding freeze/thaw cycles.

NOTE

For Research Use Only. Not for diagnostic, therapeutics, prophylactic or in vivo use.