

DATASHEET

MSH2 Mouse Monoclonal Antibody(C2436)

CAT. NO. AMA02048

KEY FEATURES

| | | | |
|---------------|--|---------------|--------------|
| Target | MSH2 | Source / Host | Mouse |
| Reactivity | Human | Clonality | Monoclonal |
| Applications | WB, IHC | Conjugation | Unconjugated |
| Form / Buffer | Mouse IgG. Liquid in PBS containing 50% glycerol, 0.2% BSA and 0.01% sodium azide. | Storage | at-20°C |

BACKGROUND

Component of the post-replicative DNA mismatch repair system (MMR). Forms two different heterodimers: MutS alpha (MSH2-MSH6 heterodimer) and MutS beta (MSH2-MSH3 heterodimer) which binds to DNA mismatches thereby initiating DNA repair. When bound, heterodimers bend the DNA helix and shields approximately 20 base pairs. MutS alpha recognizes single base mismatches and dinucleotide insertion-deletion loops (IDL) in the DNA. MutS beta recognizes larger insertion-deletion loops up to 13 nucleotides long. After mismatch binding, MutS alpha or beta forms a ternary complex with the MutL alpha heterodimer, which is thought to be responsible for directing the downstream MMR events, including strand discrimination, excision, and resynthesis.

APPLICATION

To ensure optimal assay performance, AREX recommends conducting reagent titration tailored to each testing system for optimal detection results.

| | |
|-----|----------------|
| WB | 1:500 - 1:1000 |
| IHC | 1:100 - 1:300 |

*Results are sample-specific. Please refer to your local assay conditions and test parameters for reference.

PRODUCT OVERVIEW

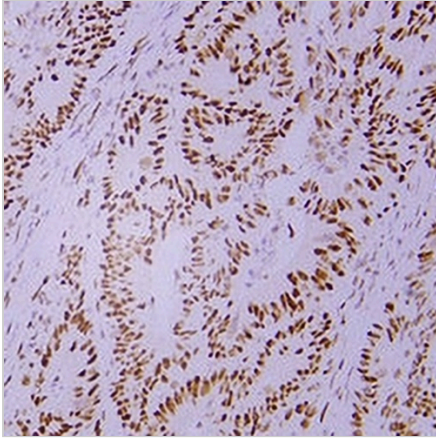
| | |
|-------------------|--|
| Description | Mouse monoclonal antibody to MSH2 |
| Specificity | Recognizes endogenous levels of MSH2 protein. |
| Antibody Type | Primary antibody |
| Immunogen | KLH-conjugated synthetic peptide encompassing a sequence within human MSH2. The exact sequence is proprietary. |
| Purification | The antibody was purified by immunogen affinity chromatography. |
| Form/Buffer | Mouse IgG. Liquid in PBS containing 50% glycerol, 0.2% BSA and 0.01% sodium azide. |
| Alternative Names | DNA mismatch repair protein Msh2; hMSH2; MutS protein homolog 2 |
| Gene Symbol | MSH2 |
| Entrez Gene | 4436(Human) |
| SwissProt | P43246(Human) |

*AREX continuously optimizes our products. Webpage content may not reflect the latest updates. For inquiries, please contact info@arexbio.com or your local distributor.

*Clone Number, Reactivity, Source/Host and Clonality can be found in the product name and Key Features section above.

DATASHEET**MSH2 Mouse Monoclonal Antibody(C2436)**

CAT. NO. AMA02048

DATA

Immunohistochemical analysis of MSH2 staining in human colon carcinoma formalin fixed paraffin embedded tissue section. The section was pre-treated using heat mediated antigen retrieval with sodium citrate buffer (pH 6.0). The section was then incubated with the antibody at room temperature and detected using an HRP conjugated compact polymer system. DAB was used as the chromogen. The section was then counterstained with haematoxylin and mounted with DPX.

STORAGE

Store at 4°C short term. For long term storage, store at -20°C, avoiding freeze/thaw cycles.

NOTE

For Research Use Only. Not for diagnostic, therapeutics, prophylactic or in vivo use.