

DATASHEET

Cytokeratin-pan Mouse Monoclonal Antibody(C2442)

CAT. NO. AMA02054

KEY FEATURES

Target	Cytokeratin-pan	Source / Host	Mouse
Reactivity	Human, Mouse, Rat	Clonality	Monoclonal
Applications	IHC	Conjugation	Unconjugated
Form / Buffer	Mouse IgG1. Liquid in PBS containing 50% glycerol, 0.2% BSA and 0.01% sodium azide.	Storage	at-20°C

BACKGROUND

Probably contributes to terminal cornification . Associated with keratinocyte activation, proliferation and keratinization . Required for maintenance of corneocytes and keratin filaments in suprabasal keratinocytes in the epidermis of the ear, potentially via moderation of expression and localization of keratins and their partner proteins . Plays a role in the establishment of the epidermal barrier on plantar skin .

APPLICATION

To ensure optimal assay performance, AREX recommends conducting reagent titration tailored to each testing system for optimal detection results.

IHC	1:100 - 1:300
-----	---------------

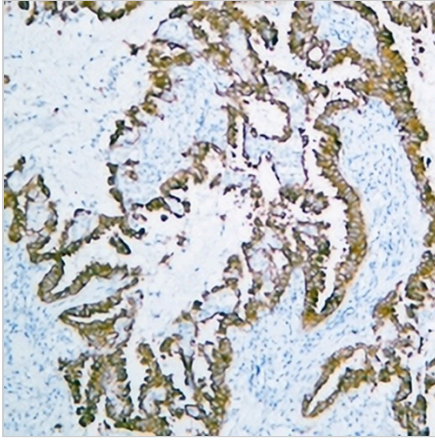
*Results are sample-specific. Please refer to your local assay conditions and test parameters for reference.

PRODUCT OVERVIEW

Description	Mouse monoclonal antibody to Cytokeratin
Specificity	Recognizes endogenous levels of Cytokeratin protein.
Antibody Type	Primary antibody
Immunogen	KLH-conjugated synthetic peptide encompassing a sequence within the center region of human Cytokeratin. The exact sequence is proprietary.
Purification	The antibody was purified by immunogen affinity chromatography.
Form/Buffer	Mouse IgG1. Liquid in PBS containing 50% glycerol, 0.2% BSA and 0.01% sodium azide.
Alternative Names	KRT2; KRT2A; KRT2E; Keratin, type II cytoskeletal 2 epidermal; Cytokeratin-2e; CK-2e; Epithelial keratin-2e; Keratin-2 epidermis; Keratin-2e; K2e; Type-II keratin Kb2; KRT76; KRT2B; KRT2P; Keratin, type II cytoskeletal 2 oral; Cytokeratin-2P; CK-2P; K2P; Keratin-76; K76; Type-II keratin Kb9; KRT3; Keratin, type II cytoskeletal 3; 65 kDa cyto keratin; Cytokeratin-3; CK-3; Keratin-3; K3; Type-II keratin Kb3; KRT5; Keratin, type II cytoskeletal 5; 58 kDa cyto keratin; Cytokeratin-5; CK-5; Keratin-5; K5; Type-II keratin Kb5; KRT6A; K6A; KRT6D; Keratin, type II cytoskeletal 6A; Cytokeratin-6A; CK-6A; Cytokeratin-6D; CK-6D; Keratin-6A; K6A; Type-II keratin Kb6; allergen Hom s 5; KRT6B; K6B; KRTL1; Keratin, type II cytoskeletal 6B; Cytokeratin-6B; CK-6B; Keratin-6B; K6B; Type-II keratin Kb10; KRT6C; KRT6E; Keratin, type II cytoskeletal 6C; Cytokeratin-6C; CK-6C; Cytokeratin-6E; CK-6E; Keratin K6h; Keratin-6C; K6C; Type-II keratin Kb12; KRT71; K6IRS1; KB34; KRT6IRS1; Keratin, type II cytoskeletal 71; Cytokeratin-71; CK-71; Keratin-71; K71; Type II inner root sheath-specific keratin-K6irs1; Keratin 6 irs; hK6irs; hK6irs1; Type-II keratin Kb34; KRT72; K6IRS2; KB35; KRT6; KRT6IRS2; Keratin, type II cytoskeletal 72; Cytokeratin-72; CK-72; Keratin-72; K72; Type II inner root sheath-specific keratin-K6irs2; Type-II keratin Kb35; KRT73; K6IRS3; KB36; KRT6IRS3; Keratin, type II cytoskeletal 73; Cytokeratin-73; CK-73; Keratin-73; K73; Type II inner root sheath-specific keratin-K6irs3; Type-II keratin Kb36; KRT74; K6IRS4; KB37; KRT5C; KRT6IRS4; Keratin, type II cytoskeletal 74; Cytokeratin-74; CK-74; Keratin-5c; K5C; Keratin-74; K74; Type II inner root sheath-specific keratin-K6irs4; Type-II keratin Kb37; KRT75; K6HF; KB18; Keratin, type II cytoskeletal 75; Cytokeratin-75; CK-75; Keratin-6 hair follicle; hK6hf; Keratin-75; K75; Type II keratin-K6hf; Type II keratin Kb18; KRT79; K6L; KB38; KRT6L; Keratin, type II cytoskeletal 79; Cytokeratin 79; CK-79; Keratin-6 like; Keratin-6L; Keratin-6L; Keratin-79; K79; Type II keratin Kb38; Keratin Kb38

DATASHEET**Cytokeratin-pan Mouse Monoclonal Antibody(C2442)**

CAT. NO. AMA02054

DATA

Immunohistochemical analysis of Cytokeratin-pan staining in human lung adenocarcinoma formalin fixed paraffin embedded tissue section. The section was pre-treated using heat mediated antigen retrieval with sodium citrate buffer (pH 6.0). The section was then incubated with the antibody at room temperature and detected using an HRP conjugated compact polymer system. DAB was used as the chromogen. The section was then counterstained with haematoxylin and mounted with DPX.

STORAGE

Store at 4°C short term. For long term storage, store at -20°C, avoiding freeze/thaw cycles.

NOTE

For Research Use Only. Not for diagnostic, therapeutics, prophylactic or in vivo use.