

DATASHEET

Smooth Muscle Actin Mouse Monoclonal Antibody(C2491)

CAT. NO. AMA02103

KEY FEATURES

Target	Smooth Muscle Actin	Source / Host	Mouse
Reactivity	Human, Mouse, Rat	Clonality	Monoclonal
Applications	WB, IHC, FC	Conjugation	Unconjugated
Form / Buffer	Mouse IgG1. Liquid in PBS, pH 7.3, 30% glycerol, and 0.01% sodium azide.	Storage	at-20°C

BACKGROUND

Actins are highly conserved proteins that are involved in various types of cell motility and are ubiquitously expressed in all eukaryotic cells.

APPLICATION

To ensure optimal assay performance, AREX recommends conducting reagent titration tailored to each testing system for optimal detection results.

WB	1:500 - 1:1000
IHC	1:100 - 1:500
FC	1:100 - 1:200

*Results are sample-specific. Please refer to your local assay conditions and test parameters for reference.

PRODUCT OVERVIEW

Description	Mouse monoclonal to Smooth Muscle Actin
Specificity	Recognizes endogenous levels of Smooth Muscle Actin protein
Antibody Type	Primary antibody
Immunogen	Recombinant fusion protein of human Smooth Muscle Actin expressed in E. Coli
Purification	This antibody is purified through a protein G column.
Molecular Weight	Predicted: 42 kD; Observed: 43 kD
Form/Buffer	Mouse IgG1. Liquid in PBS, pH 7.3, 30% glycerol, and 0.01% sodium azide.
Alternative Names	ACTSA; ACTVS; Actin, aortIC, smooth muscle; Alpha-actin-2; Cell growth-inhibiting gene 46 protein
Gene Symbol	ACTA2
Entrez Gene	59(Human); 11475(Mouse); 81633(Rat)
SwissProt	P62736(Human); P62737(Mouse); P62738(Rat)

*AREX continuously optimizes our products. Webpage content may not reflect the latest updates. For inquiries, please contact info@arexbio.com or your local distributor.

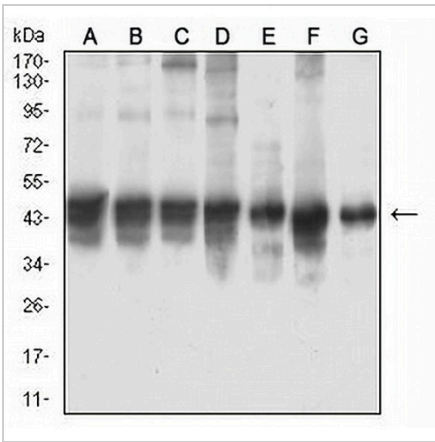
*Clone Number, Reactivity, Source/Host and Clonality can be found in the product name and Key Features section above.

DATASHEET

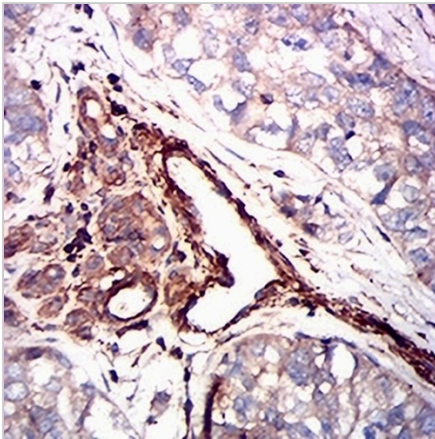
Smooth Muscle Actin Mouse Monoclonal Antibody(C2491)

CAT. NO. AMA02103

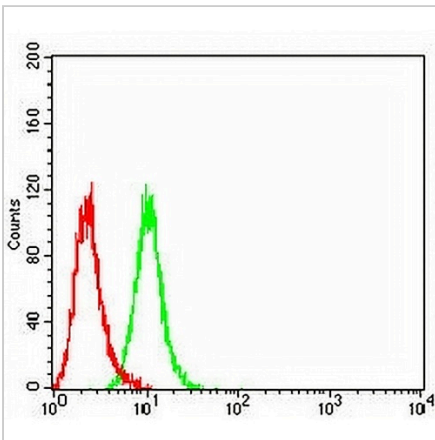
DATA



Western blot analysis of Smooth Muscle Actin expression in EC (A), HUVE12 (B), A549 (C), NIH/3T3 (D), HL60 (E), Hela (F), K652 (G) whole cell lysates. (Predicted band size: 42 kD; Observed band size: 43 kD)



Immunohistochemical analysis of Smooth Muscle Actin staining in human bladder cancer formalin fixed paraffin embedded tissue section. The section was pre-treated using heat mediated antigen retrieval with sodium citrate buffer (pH 6.0). The section was then incubated with the antibody at room temperature and detected using an HRP conjugated compact polymer system. DAB was used as the chromogen. The section was then counterstained with haematoxylin and mounted with DPX.



Flow cytometric analysis of HeLa cells using Anti-Smooth Muscle Actin Antibody (green) and negative control (red).

STORAGE

Store at 4°C short term. For long term storage, store at -20°C, avoiding freeze/thaw cycles.

NOTE

For Research Use Only. Not for diagnostic, therapeutics, prophylactic or in vivo use.