

DATASHEET

Centaurin-alpha-1 Mouse Monoclonal Antibody(C2495)

CAT. NO. AMA02107

KEY FEATURES

Target	Centaurin-alpha-1	Source / Host	Mouse
Reactivity	Human, Rat	Clonality	Monoclonal
Applications	WB, FC	Conjugation	Unconjugated
Form / Buffer	Mouse IgG1. Liquid in PBS, pH 7.3, 30% glycerol, and 0.01% sodium azide.	Storage	at-20°C

BACKGROUND

GTPase-activating protein for the ADP ribosylation factor family (Probable). Binds phosphatidylinositol 3,4,5-trisphosphate (PtdInsP3) and inositol 1,3,4,5-tetrakisphosphate (InsP4). Regulates the incorporation of CD63 and CD9 into multivesicular bodies . Binds phosphatidylinositol 3,4,5-trisphosphate (PtdInsP3) and inositol 1,3,4,5-tetrakisphosphate (InsP4). Regulates the incorporation of CD63 and CD9 into multivesicular bodies .

APPLICATION

To ensure optimal assay performance, AREX recommends conducting reagent titration tailored to each testing system for optimal detection results.

WB	1:500 - 1:1000
FC	1:100 - 1:200

*Results are sample-specific. Please refer to your local assay conditions and test parameters for reference.

PRODUCT OVERVIEW

Description	Mouse monoclonal to Centaurin-alpha-1
Specificity	Recognizes endogenous levels of Centaurin-alpha-1 protein
Antibody Type	Primary antibody
Immunogen	Recombinant fusion protein of human Centaurin-alpha-1 expressed in E. Coli
Purification	This antibody is purified through a protein G column.
Molecular Weight	Predicted: 43 kD; Observed: 42 kD
Form/Buffer	Mouse IgG1. Liquid in PBS, pH 7.3, 30% glycerol, and 0.01% sodium azide.
Alternative Names	CENTA1; Arf-GAP with dual PH domain-containing protein 1; Centaurin-alpha-1; Cnt-a1; Putative MAPK-activating protein PM25
Gene Symbol	ADAP1
Entrez Gene	11033(Human)
SwissProt	O75689(Human)

*AREX continuously optimizes our products. Webpage content may not reflect the latest updates. For inquiries, please contact info@arexbio.com or your local distributor.

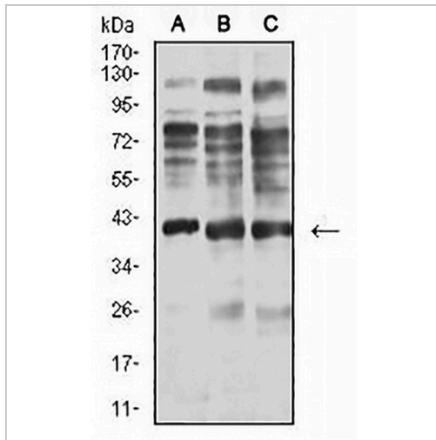
*Clone Number, Reactivity, Source/Host and Clonality can be found in the product name and Key Features section above.

DATASHEET

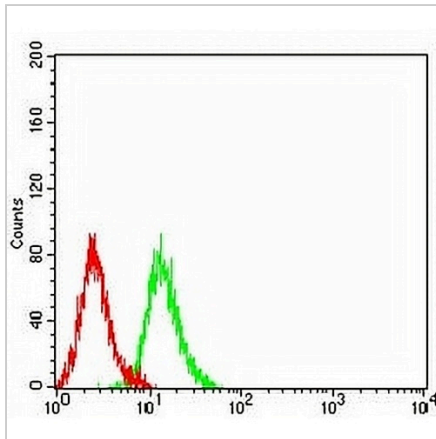
Centaurin-alpha-1 Mouse Monoclonal Antibody(C2495)

CAT. NO. AMA02107

DATA



Western blot analysis of Centaurin-alpha-1 expression in C6 (A), A549 (B), HepG2 (C) whole cell lysates. (Predicted band size: 43 kD; Observed band size: 42 kD)



Flow cytometric analysis of K562 cells using Anti-Centaurin-alpha-1 Antibody (green) and negative control (red).

STORAGE

Store at 4°C short term. For long term storage, store at -20°C, avoiding freeze/thaw cycles.

NOTE

For Research Use Only. Not for diagnostic, therapeutics, prophylactic or in vivo use.