

**DATASHEET**

**Beta-2 Adrenergic Receptor Mouse Monoclonal Antibody(C2497)**

CAT. NO. AMA02109

**KEY FEATURES**

Target	Beta-2 Adrenergic Receptor	Source / Host	Mouse
Reactivity	Human, Rat	Clonality	Monoclonal
Applications	WB, FC	Conjugation	Unconjugated
Form / Buffer	Mouse IgG1. Liquid in PBS, pH 7.3, 30% glycerol, and 0.01% sodium azide.	Storage	at-20°C

**BACKGROUND**

G protein-coupled receptor for catecholamines that couples to both G(s) and G(i) proteins, activating bifurcated signaling pathways and G(i) proteins, activating bifurcated signaling pathways . ADRB2 binds epinephrine (Epi) with an approximately 30-fold greater affinity than norepinephrine (NE) . In the heart, Epi- and NE-activated ADRB2 induces rapid and slow cardiomyocyte contraction rate, respectively . Both NE and Epi promote coupling to G(s)/PKA pathway to regulate myocyte contraction rate . Epi also promotes ADRB2 coupling to G(i) proteins to exert cardioprotective effects especially in the conditions of hypoxia and oxidative stress through the G(i)/PI3K/Akt signaling pathway .

**APPLICATION**

To ensure optimal assay performance, AREX recommends conducting reagent titration tailored to each testing system for optimal detection results.

WB	1:500 - 1:1000
FC	1:100 - 1:200

\*Results are sample-specific. Please refer to your local assay conditions and test parameters for reference.

**PRODUCT OVERVIEW**

Description	Mouse monoclonal to Beta-2 Adrenergic Receptor
Specificity	Recognizes endogenous levels of Beta-2 Adrenergic Receptor protein
Antibody Type	Primary antibody
Immunogen	Recombinant fusion protein of human Beta-2 Adrenergic Receptor expressed in E. Coli
Purification	This antibody is purified through a protein G column.
Molecular Weight	Predicted: 47 kD; Observed: 43 kD kD
Form/Buffer	Mouse IgG1. Liquid in PBS, pH 7.3, 30% glycerol, and 0.01% sodium azide.
Alternative Names	ADRB2R; B2AR; Beta-2 adrenergic receptor; Beta-2 adrenoreceptor; Beta-2 adrenoceptor
Gene Symbol	ADRB2
Entrez Gene	154(Human)
SwissProt	P07550(Human); P10608(Rat)

\*AREX continuously optimizes our products. Webpage content may not reflect the latest updates. For inquiries, please contact [info@arexbio.com](mailto:info@arexbio.com) or your local distributor.

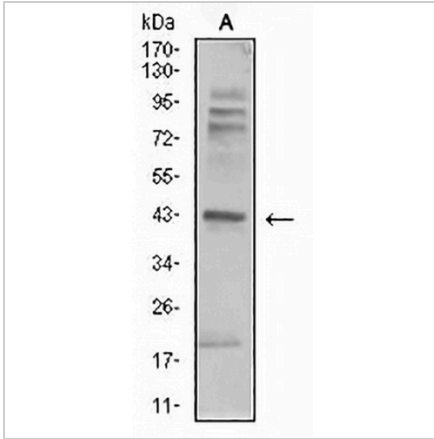
\*Clone Number, Reactivity, Source/Host and Clonality can be found in the product name and Key Features section above.

**DATASHEET**

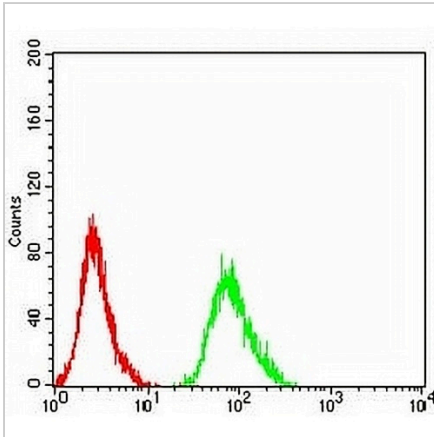
**Beta-2 Adrenergic Receptor Mouse Monoclonal Antibody(C2497)**

CAT. NO. AMA02109

**DATA**



Western blot analysis of Beta-2 Adrenergic Receptor expression in C6 (A) whole cell lysates. (Predicted band size: 47 kD; Observed band size: 43 kD)



Flow cytometric analysis of MCF7 cells using Anti-Beta-2 Adrenergic Receptor Antibody (green) and negative control (red).

**STORAGE**

Store at 4°C short term. For long term storage, store at -20°C, avoiding freeze/thaw cycles.

**NOTE**

For Research Use Only. Not for diagnostic, therapeutics, prophylactic or in vivo use.