

DATASHEET

XB130 Mouse Monoclonal Antibody(C2499)

CAT. NO. AMA02111

KEY FEATURES

Target	XB130	Source / Host	Mouse
Reactivity	Human	Clonality	Monoclonal
Applications	WB, FC	Conjugation	Unconjugated
Form / Buffer	Mouse IgG1. Liquid in PBS, pH 7.3, 30% glycerol, and 0.01% sodium azide.	Storage	at-20°C

BACKGROUND

May play a role in a signaling cascade by enhancing the kinase activity of SRC. Contributes to SRC-regulated transcription activation.

APPLICATION

To ensure optimal assay performance, AREX recommends conducting reagent titration tailored to each testing system for optimal detection results.

WB	1:500 - 1:1000
FC	1:100 - 1:200

*Results are sample-specific. Please refer to your local assay conditions and test parameters for reference.

PRODUCT OVERVIEW

Description	Mouse monoclonal to XB130
Specificity	Recognizes endogenous levels of XB130 protein
Antibody Type	Primary antibody
Immunogen	Recombinant fusion protein of human XB130 expressed in E. Coli
Purification	This antibody is purified through a protein G column.
Molecular Weight	Predicted: 91 kD; Observed: 93 kD kD
Form/Buffer	Mouse IgG1. Liquid in PBS, pH 7.3, 30% glycerol, and 0.01% sodium azide.
Alternative Names	KIAA1914; XB130; Actin filament-associated protein 1-like 2; AFAP1-like protein 2
Gene Symbol	AFAP1L2
Entrez Gene	84632(Human)
SwissProt	Q8N4X5(Human)

*AREX continuously optimizes our products. Webpage content may not reflect the latest updates. For inquiries, please contact info@arexbio.com or your local distributor.

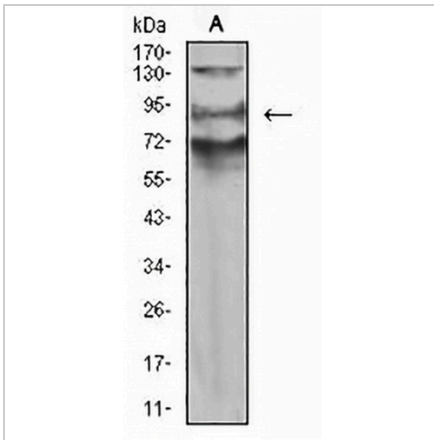
*Clone Number, Reactivity, Source/Host and Clonality can be found in the product name and Key Features section above.

DATASHEET

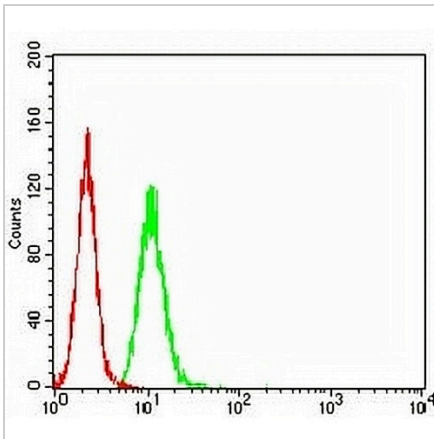
XB130 Mouse Monoclonal Antibody(C2499)

CAT. NO. AMA02111

DATA



Western blot analysis of XB130 expression in A549 (A) whole cell lysates. (Predicted band size: 91 kD; Observed band size: 93 kD)



Flow cytometric analysis of HeLa cells using Anti-XB130 Antibody (green) and negative control (red).

STORAGE

Store at 4°C short term. For long term storage, store at -20°C, avoiding freeze/thaw cycles.

NOTE

For Research Use Only. Not for diagnostic, therapeutics, prophylactic or in vivo use.