

DATASHEET

AIM2 Mouse Monoclonal Antibody(C2500)

CAT. NO. AMA02112

KEY FEATURES

Target	AIM2	Source / Host	Mouse
Reactivity	Human	Clonality	Monoclonal
Applications	WB, IF/ICC	Conjugation	Unconjugated
Form / Buffer	Mouse IgG1. Liquid in PBS, pH 7.3, 30% glycerol, and 0.01% sodium azide.	Storage	at-20°C

BACKGROUND

Sensor component of the AIM2 inflammasome, which mediates inflammasome activation in response to the presence of double-stranded DNA (dsDNA) in the cytosol, leading to subsequent pyroptosis in the cytosol, leading to subsequent pyroptosis. Inflammasomes are supramolecular complexes that assemble in the cytosol in response to pathogens and other damage-associated signals and play critical roles in innate immunity and inflammation. Acts as a recognition receptor (PRR): specifically recognizes and binds dsDNA in the cytosol, and mediates the formation of the inflammasome polymeric complex composed of AIM2, CASP1 and PYCARD/ASC.

APPLICATION

To ensure optimal assay performance, AREX recommends conducting reagent titration tailored to each testing system for optimal detection results.

WB	1:500 - 1:1000
IF/ICC	1:100 - 1:500

*Results are sample-specific. Please refer to your local assay conditions and test parameters for reference.

PRODUCT OVERVIEW

Description	Mouse monoclonal to AIM2
Specificity	Recognizes endogenous levels of AIM2 protein
Antibody Type	Primary antibody
Immunogen	Recombinant fusion protein of human AIM2 expressed in E. Coli
Purification	This antibody is purified through a protein G column.
Molecular Weight	Predicted: 39 kD; Observed: 42 kD
Form/Buffer	Mouse IgG1. Liquid in PBS, pH 7.3, 30% glycerol, and 0.01% sodium azide.
Alternative Names	Interferon-inducible protein AIM2; Absent in melanoma 2
Gene Symbol	AIM2
Entrez Gene	9447(Human)
SwissProt	O14862(Human)

*AREX continuously optimizes our products. Webpage content may not reflect the latest updates. For inquiries, please contact info@arexbio.com or your local distributor.

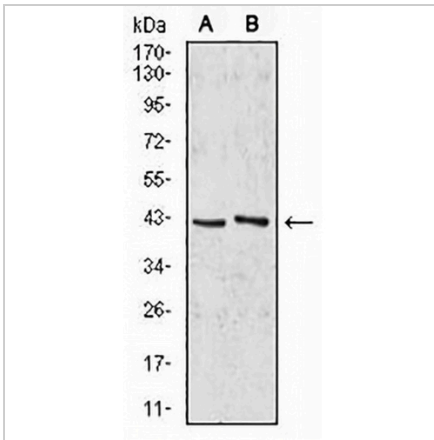
*Clone Number, Reactivity, Source/Host and Clonality can be found in the product name and Key Features section above.

DATASHEET

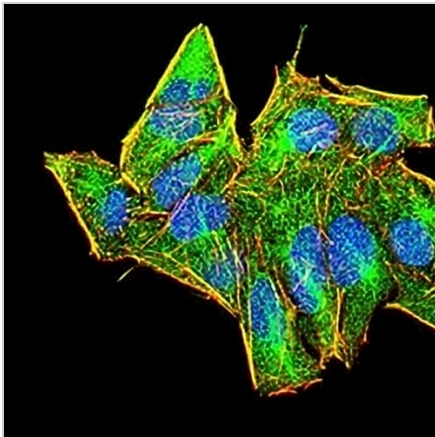
AIM2 Mouse Monoclonal Antibody(C2500)

CAT. NO. AMA02112

DATA



Western blot analysis of AIM2 expression in HepG2 (A), A549 (B) whole cell lysates. (Predicted band size: 39 kD; Observed band size: 42 kD)



Immunofluorescent analysis of AIM2 staining in HeLa cells. Formalin-fixed cells were permeabilized with 0.1% Triton X-100 in TBS for 5-10 minutes and blocked with 3% BSA-PBS for 30 minutes at room temperature. Cells were probed with the primary antibody in 3% BSA-PBS and incubated overnight at 4 °C in a humidified chamber. Cells were washed with PBST and incubated with an AREX® Fluor 488 -conjugated secondary antibody (green) in PBS at room temperature in the dark. Phalloidin - AREX® Fluor 594 was used to stain Actin filaments (red). DAPI was used to stain the cell nuclei (blue).

STORAGE

Store at 4°C short term. For long term storage, store at -20°C, avoiding freeze/thaw cycles.

NOTE

For Research Use Only. Not for diagnostic, therapeutics, prophylactic or in vivo use.