

DATASHEET
CD166 Mouse Monoclonal Antibody(C2504)
CAT. NO. AMA02116
KEY FEATURES

Target	CD166	Source / Host	Mouse
Reactivity	Human, Mouse	Clonality	Monoclonal
Applications	WB, IHC, FC	Conjugation	Unconjugated
Form / Buffer	Mouse IgG2b. Liquid in PBS, pH 7.3, 30% glycerol, and 0.01% sodium azide.	Storage	at-20°C

BACKGROUND

Cell adhesion molecule that mediates both heterotypic cell-cell contacts via its interaction with CD6, as well as homotypic cell-cell contacts . Promotes T-cell activation and proliferation via its interactions with CD6 . Contributes to the formation and maturation of the immunological synapse via its interactions with CD6 . Mediates homotypic interactions with cells that express ALCAM . Acts as a ligand for the LILRB4 receptor, enhancing LILRB4-mediated inhibition of T cell proliferation . Required for normal hematopoietic stem cell engraftment in the bone marrow . Mediates attachment of dendritic cells onto endothelial cells via homotypic interaction . Inhibits endothelial cell migration and promotes endothelial tube formation via homotypic interactions .

APPLICATION

To ensure optimal assay performance, AREX recommends conducting reagent titration tailored to each testing system for optimal detection results.

WB	1:500 - 1:1000
IHC	1:100 - 1:500
FC	1:100 - 1:200

*Results are sample-specific. Please refer to your local assay conditions and test parameters for reference.

PRODUCT OVERVIEW

Description	Mouse monoclonal to CD166
Specificity	Recognizes endogenous levels of CD166 protein
Antibody Type	Primary antibody
Immunogen	Recombinant fusion protein of human CD166 expressed in E. Coli
Purification	This antibody is purified through a protein G column.
Molecular Weight	Predicted: 65 kD; Observed: 65 kD
Form/Buffer	Mouse IgG2b. Liquid in PBS, pH 7.3, 30% glycerol, and 0.01% sodium azide.
Alternative Names	MEMD; CD166 antigen; Activated leukocyte cell adhesion molecule; CD166
Gene Symbol	ALCAM
Entrez Gene	214(Human); 79559(Rat)
SwissProt	Q13740(Human); Q61490(Mouse)

*AREX continuously optimizes our products. Webpage content may not reflect the latest updates. For inquiries, please contact info@arexbio.com or your local distributor.

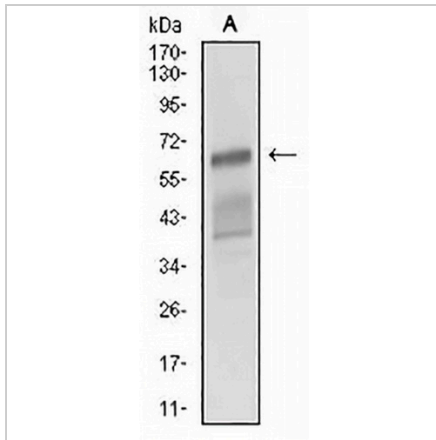
*Clone Number, Reactivity, Source/Host and Clonality can be found in the product name and Key Features section above.

DATASHEET

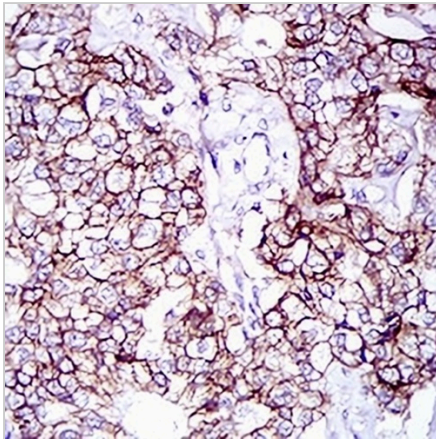
CD166 Mouse Monoclonal Antibody(C2504)

CAT. NO. AMA02116

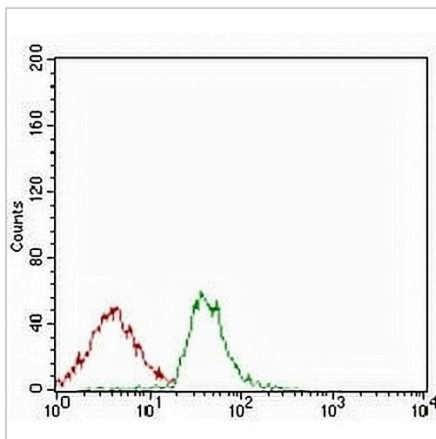
DATA



Western blot analysis of CD166 expression in NIH/3T3 (A) whole cell lysates. (Predicted band size: 65 kD; Observed band size: 65 kD)



Immunohistochemical analysis of CD166 staining in human prostate cancer formalin fixed paraffin embedded tissue section. The section was pre-treated using heat mediated antigen retrieval with sodium citrate buffer (pH 6.0). The section was then incubated with the antibody at room temperature and detected using an HRP conjugated compact polymer system. DAB was used as the chromogen. The section was then counterstained with haematoxylin and mounted with DPX.



Flow cytometric analysis of Jurkat cells using Anti-CD166 Antibody (green) and negative control (red).

STORAGE

Store at 4°C short term. For long term storage, store at -20°C, avoiding freeze/thaw cycles.

NOTE

For Research Use Only. Not for diagnostic, therapeutics, prophylactic or in vivo use.