

DATASHEET

ALDH1L1 Mouse Monoclonal Antibody(C2506)

CAT. NO. AMA02118

KEY FEATURES

Target	ALDH1L1	Source / Host	Mouse
Reactivity	Human, Mouse, Rat	Clonality	Monoclonal
Applications	WB, IHC, FC	Conjugation	Unconjugated
Form / Buffer	Mouse IgG1. Liquid in PBS, pH 7.3, 30% glycerol, and 0.01% sodium azide.	Storage	at-20°C

BACKGROUND

Cytosolic 10-formyltetrahydrofolate dehydrogenase that catalyzes the NADP(+)-dependent conversion of 10-formyltetrahydrofolate to tetrahydrofolate and carbon dioxide -dependent conversion of 10-formyltetrahydrofolate to tetrahydrofolate and carbon dioxide . May also have an NADP(+)-dependent aldehyde dehydrogenase activity towards formaldehyde, acetaldehyde, propionaldehyde, and benzaldehyde .

APPLICATION

To ensure optimal assay performance, AREX recommends conducting reagent titration tailored to each testing system for optimal detection results.

WB	1:500 - 1:1000
IHC	1:100 - 1:500
FC	1:100 - 1:200

*Results are sample-specific. Please refer to your local assay conditions and test parameters for reference.

PRODUCT OVERVIEW

Description	Mouse monoclonal to ALDH1L1
Specificity	Recognizes endogenous levels of ALDH1L1 protein
Antibody Type	Primary antibody
Immunogen	Recombinant fusion protein of human ALDH1L1 expressed in E. Coli
Purification	This antibody is purified through a protein G column.
Molecular Weight	Predicted: 99 kD; Observed: 99 kD kD
Form/Buffer	Mouse IgG1. Liquid in PBS, pH 7.3, 30% glycerol, and 0.01% sodium azide.
Alternative Names	FTHFD; Cytosolic, 10-formyltetrahydrofolate dehydrogenase; 10-FTHFDH; FDH; Aldehyde dehydrogenase family 1 member L1
Gene Symbol	ALDH1L1
Entrez Gene	10840(Human); 107747(Mouse); 64392(Rat)
SwissProt	O75891(Human); Q8R0Y6(Mouse); P28037(Rat)

*AREX continuously optimizes our products. Webpage content may not reflect the latest updates. For inquiries, please contact info@arexbio.com or your local distributor.

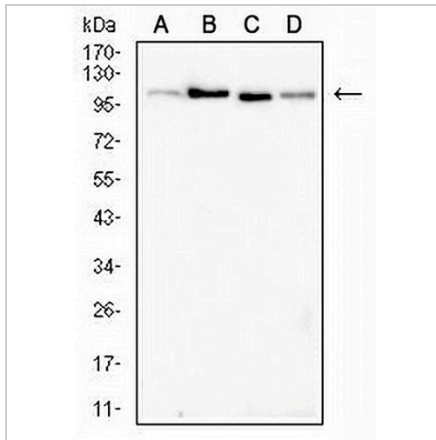
*Clone Number, Reactivity, Source/Host and Clonality can be found in the product name and Key Features section above.

DATASHEET

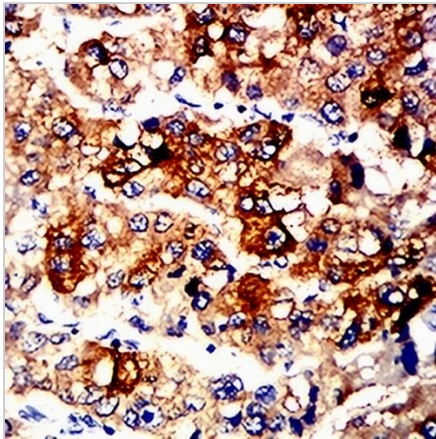
ALDH1L1 Mouse Monoclonal Antibody(C2506)

CAT. NO. AMA02118

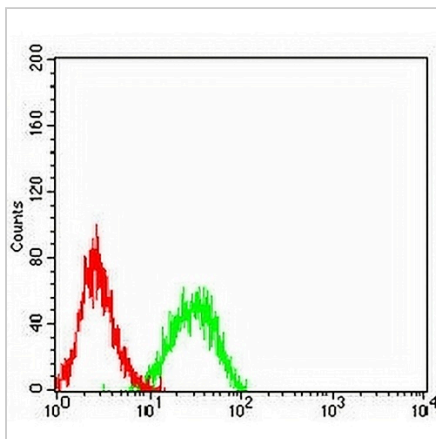
DATA



Western blot analysis of ALDH1L1 expression in rat kidney (A), mouse liver (B), rat liver (C), mouse kidney (D) whole cell lysates. (Predicted band size: 99 kD; Observed band size: 99 kD)



Immunohistochemical analysis of ALDH1L1 staining in human liver cancer formalin fixed paraffin embedded tissue section. The section was pre-treated using heat mediated antigen retrieval with sodium citrate buffer (pH 6.0). The section was then incubated with the antibody at room temperature and detected using an HRP conjugated compact polymer system. DAB was used as the chromogen. The section was then counterstained with haematoxylin and mounted with DPX.



Flow cytometric analysis of Jurkat cells using Anti-ALDH1L1 Antibody (green) and negative control (red).

STORAGE

Store at 4°C short term. For long term storage, store at -20°C, avoiding freeze/thaw cycles.

NOTE

For Research Use Only. Not for diagnostic, therapeutics, prophylactic or in vivo use.