

**DATASHEET**

**ALDH6A1 Mouse Monoclonal Antibody(C2508)**

CAT. NO. AMA02120

**KEY FEATURES**

Target	ALDH6A1	Source / Host	Mouse
Reactivity	Human	Clonality	Monoclonal
Applications	WB, IHC, IF/ICC, FC	Conjugation	Unconjugated
Form / Buffer	Mouse IgG1. Liquid in PBS, pH 7.3, 30% glycerol, and 0.01% sodium azide.	Storage	at-20°C

**BACKGROUND**

Malonate and methylmalonate semialdehyde dehydrogenase involved in the catabolism of valine, thymine, and compounds catabolized by way of beta-alanine, including uracil and cytidine.

**APPLICATION**

To ensure optimal assay performance, AREX recommends conducting reagent titration tailored to each testing system for optimal detection results.

WB	1:500 - 1:1000
IHC	1:100 - 1:500
IF/ICC	1:100 - 1:500
FC	1:100 - 1:200

\*Results are sample-specific. Please refer to your local assay conditions and test parameters for reference.

**PRODUCT OVERVIEW**

Description	Mouse monoclonal to ALDH6A1
Specificity	Recognizes endogenous levels of ALDH6A1 protein
Antibody Type	Primary antibody
Immunogen	Recombinant fusion protein of human ALDH6A1 expressed in E. Coli
Purification	This antibody is purified through a protein G column.
Molecular Weight	Predicted: 58 kD; Observed: 58 kD
Form/Buffer	Mouse IgG1. Liquid in PBS, pH 7.3, 30% glycerol, and 0.01% sodium azide.
Alternative Names	MMSDH; Methylmalonate-semialdehyde dehydrogenase [acylating], mitochondrial; MMSDH; Malonate-semialdehyde dehydrogenase [acylating]; Aldehyde dehydrogenase family 6 member A1
Gene Symbol	ALDH6A1
Entrez Gene	4329(Human)
SwissProt	Q02252(Human)

\*AREX continuously optimizes our products. Webpage content may not reflect the latest updates. For inquiries, please contact [info@arexbio.com](mailto:info@arexbio.com) or your local distributor.

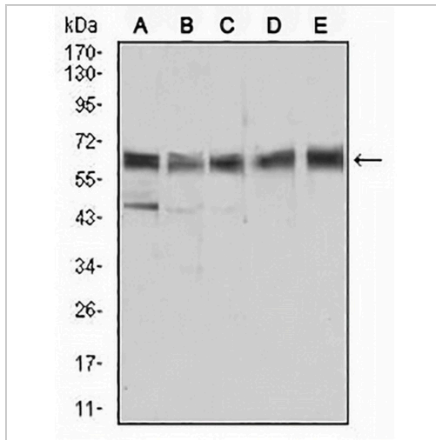
\*Clone Number, Reactivity, Source/Host and Clonality can be found in the product name and Key Features section above.

**DATASHEET**

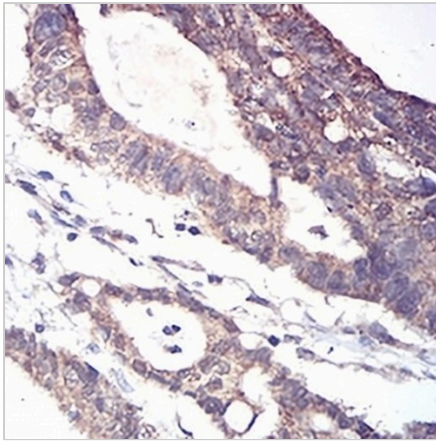
**ALDH6A1 Mouse Monoclonal Antibody(C2508)**

CAT. NO. AMA02120

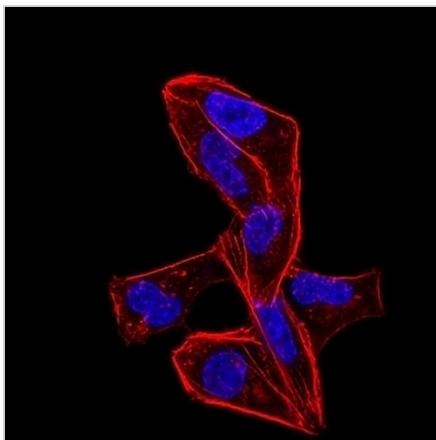
**DATA**



Western blot analysis of ALDH6A1 expression in Jurkat (A), HEK293 (B), Hela (C), MCF7 (D), LNCap (E) whole cell lysates. (Predicted band size: 58 kD; Observed band size: 58 kD)



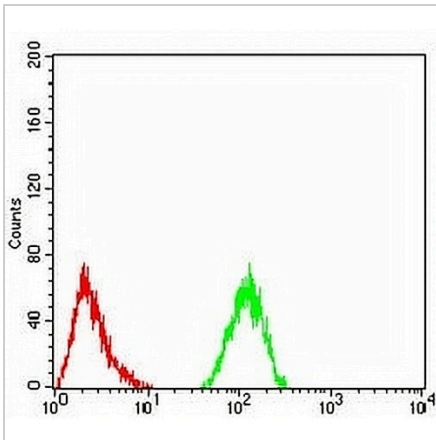
Immunohistochemical analysis of ALDH6A1 staining in human rectum cancer formalin fixed paraffin embedded tissue section. The section was pre-treated using heat mediated antigen retrieval with sodium citrate buffer (pH 6.0). The section was then incubated with the antibody at room temperature and detected using an HRP conjugated compact polymer system. DAB was used as the chromogen. The section was then counterstained with haematoxylin and mounted with DPX.



Immunofluorescent analysis of ALDH6A1 staining in Hela cells. Formalin-fixed cells were permeabilized with 0.1% Triton X-100 in TBS for 5-10 minutes and blocked with 3% BSA-PBS for 30 minutes at room temperature. Cells were probed with the primary antibody in 3% BSA-PBS and incubated overnight at 4 °C in a humidified chamber. Cells were washed with PBST and incubated with an AREX® Fluor 488 -conjugated secondary antibody (green) in PBS at room temperature in the dark. Phalloidin - AREX® Fluor 594 was used to stain Actin filaments (red). DAPI was used to stain the cell nuclei (blue).

**DATASHEET****ALDH6A1 Mouse Monoclonal Antibody(C2508)**

CAT. NO. AMA02120

**DATA (CONTINUED)**

Flow cytometric analysis of HeLa cells using Anti-ALDH6A1 Antibody (green) and negative control (red).

**STORAGE**

Store at 4°C short term. For long term storage, store at -20°C, avoiding freeze/thaw cycles.

**NOTE**

For Research Use Only. Not for diagnostic, therapeutics, prophylactic or in vivo use.