

**DATASHEET**

**CD246 Mouse Monoclonal Antibody(C2510)**

CAT. NO. AMA02122

**KEY FEATURES**

Target	CD246	Source / Host	Mouse
Reactivity	Human	Clonality	Monoclonal
Applications	WB, IHC, FC	Conjugation	Unconjugated
Form / Buffer	Mouse IgG1. Liquid in PBS, pH 7.3, 30% glycerol, and 0.01% sodium azide.	Storage	at-20°C

**BACKGROUND**

Neuronal receptor tyrosine kinase that is essentially and transiently expressed in specific regions of the central and peripheral nervous systems and plays an important role in the genesis and differentiation of the nervous system . Also acts as a key thinness protein involved in the resistance to weight gain: in hypothalamic neurons, controls energy expenditure acting as a negative regulator of white adipose tissue lipolysis and sympathetic tone to fine-tune energy homeostasis . Following activation by ALKAL2 ligand at the cell surface, transduces an extracellular signal into an intracellular response . In contrast, ALKAL1 is not a potent physiological ligand for ALK .

**APPLICATION**

To ensure optimal assay performance, AREX recommends conducting reagent titration tailored to each testing system for optimal detection results.

WB	1:500 - 1:1000
IHC	1:100 - 1:500
FC	1:100 - 1:200

\*Results are sample-specific. Please refer to your local assay conditions and test parameters for reference.

**PRODUCT OVERVIEW**

Description	Mouse monoclonal to CD246
Specificity	Recognizes endogenous levels of CD246 protein
Antibody Type	Primary antibody
Immunogen	Recombinant fusion protein of human CD246 expressed in E. Coli
Purification	This antibody is purified through a protein G column.
Molecular Weight	Predicted: 176 kD; Observed: 130 kD kD
Form/Buffer	Mouse IgG1. Liquid in PBS, pH 7.3, 30% glycerol, and 0.01% sodium azide.
Alternative Names	ALK tyrosine kinase receptor; AnaplastiC, lymphoma kinase; CD246
Gene Symbol	ALK
Entrez Gene	238(Human)
SwissProt	Q9UM73(Human)

\*AREX continuously optimizes our products. Webpage content may not reflect the latest updates. For inquiries, please contact [info@arexbio.com](mailto:info@arexbio.com) or your local distributor.

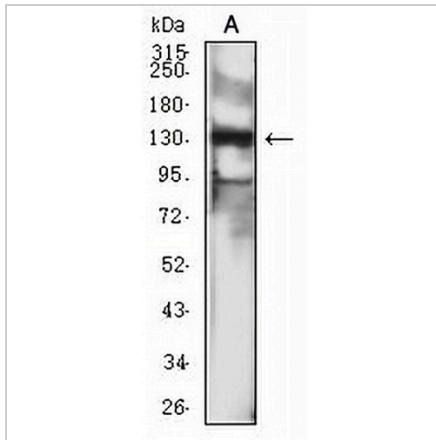
\*Clone Number, Reactivity, Source/Host and Clonality can be found in the product name and Key Features section above.

**DATASHEET**

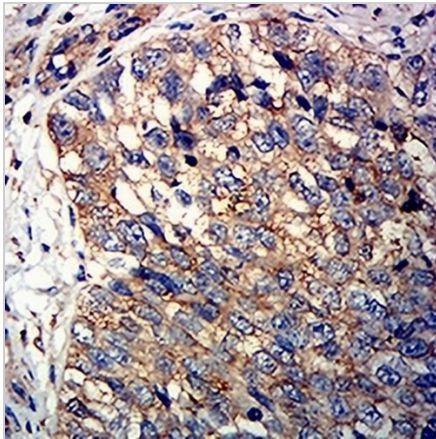
**CD246 Mouse Monoclonal Antibody(C2510)**

CAT. NO. AMA02122

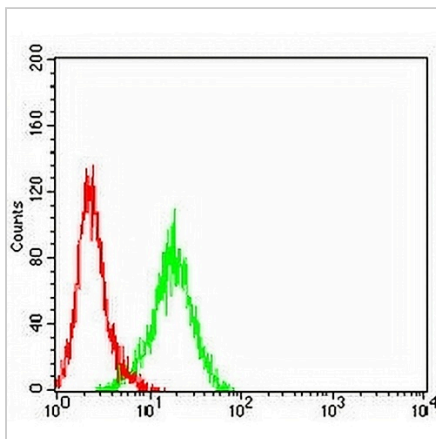
**DATA**



Western blot analysis of CD246 expression in SKNSH (A) whole cell lysates. (Predicted band size: 176 kD; Observed band size: 130 kD)



Immunohistochemical analysis of CD246 staining in human bladder cancer formalin fixed paraffin embedded tissue section. The section was pre-treated using heat mediated antigen retrieval with sodium citrate buffer (pH 6.0). The section was then incubated with the antibody at room temperature and detected using an HRP conjugated compact polymer system. DAB was used as the chromogen. The section was then counterstained with haematoxylin and mounted with DPX.



Flow cytometric analysis of K562 cells using Anti-CD246 Antibody (green) and negative control (red).

**STORAGE**

Store at 4°C short term. For long term storage, store at -20°C, avoiding freeze/thaw cycles.

**NOTE**

For Research Use Only. Not for diagnostic, therapeutics, prophylactic or in vivo use.