

DATASHEET

ALPI Mouse Monoclonal Antibody(C2511)

CAT. NO. AMA02123

KEY FEATURES

| | | | |
|---------------|--|---------------|--------------|
| Target | ALPI | Source / Host | Mouse |
| Reactivity | Human | Clonality | Monoclonal |
| Applications | WB, FC | Conjugation | Unconjugated |
| Form / Buffer | Mouse IgG1. Liquid in PBS, pH 7.3, 30% glycerol, and 0.01% sodium azide. | Storage | at-20°C |

BACKGROUND

Alkaline phosphatase that can hydrolyze various phosphate compounds.

APPLICATION

To ensure optimal assay performance, AREX recommends conducting reagent titration tailored to each testing system for optimal detection results.

| | |
|----|----------------|
| WB | 1:500 - 1:1000 |
| FC | 1:100 - 1:200 |

*Results are sample-specific. Please refer to your local assay conditions and test parameters for reference.

PRODUCT OVERVIEW

| | |
|-------------------|--|
| Description | Mouse monoclonal to ALPI |
| Specificity | Recognizes endogenous levels of ALPI protein |
| Antibody Type | Primary antibody |
| Immunogen | Recombinant fusion protein of human ALPI expressed in E. Coli |
| Purification | This antibody is purified through a protein G column. |
| Molecular Weight | Predicted: 57 kD; Observed: 57 kD |
| Form/Buffer | Mouse IgG1. Liquid in PBS, pH 7.3, 30% glycerol, and 0.01% sodium azide. |
| Alternative Names | Intestinal-type alkaline phosphatase; IAP; Intestinal alkaline phosphatase |
| Gene Symbol | ALPI |
| Entrez Gene | 248(Human) |
| SwissProt | P09923(Human) |

*AREX continuously optimizes our products. Webpage content may not reflect the latest updates. For inquiries, please contact info@arexbio.com or your local distributor.

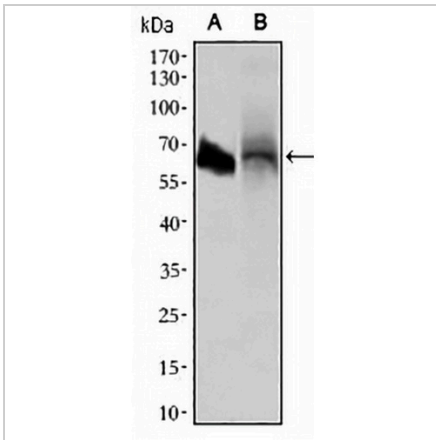
*Clone Number, Reactivity, Source/Host and Clonality can be found in the product name and Key Features section above.

DATASHEET

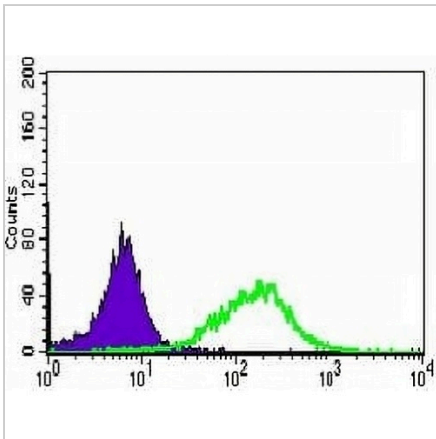
ALPI Mouse Monoclonal Antibody(C2511)

CAT. NO. AMA02123

DATA



Western blot analysis of ALPI expression in HL60 (A), HepG2 (B) whole cell lysates. (Predicted band size: 57 kD; Observed band size: 57 kD kD)



Flow cytometric analysis of HepG2 cells using Anti-ALPI Antibody (green) and negative control (red).

STORAGE

Store at 4°C short term. For long term storage, store at -20°C, avoiding freeze/thaw cycles.

NOTE

For Research Use Only. Not for diagnostic, therapeutics, prophylactic or in vivo use.