

DATASHEET

ALPL Mouse Monoclonal Antibody(C2512)

CAT. NO. AMA02124

KEY FEATURES

| | | | |
|---------------|--|---------------|--------------|
| Target | ALPL | Source / Host | Mouse |
| Reactivity | Human | Clonality | Monoclonal |
| Applications | WB, IHC, FC | Conjugation | Unconjugated |
| Form / Buffer | Mouse IgG1. Liquid in PBS, pH 7.3, 30% glycerol, and 0.01% sodium azide. | Storage | at-20°C |

BACKGROUND

Alkaline phosphatase that metabolizes various phosphate compounds and plays a key role in skeletal mineralization and adaptive thermogenesis . Has broad substrate specificity and can hydrolyze a considerable variety of compounds: however, only a few substrates, such as diphosphate (inorganic pyrophosphate; PPI), pyridoxal 5'-phosphate (PLP) and N-phosphocreatine are natural substrates . Plays an essential role in skeletal and dental mineralization via its ability to hydrolyze extracellular diphosphate, a potent mineralization inhibitor, to phosphate: it thereby promotes hydroxyapatite crystal formation and increases inorganic phosphate concentration .

APPLICATION

To ensure optimal assay performance, AREX recommends conducting reagent titration tailored to each testing system for optimal detection results.

| | |
|-----|----------------|
| WB | 1:500 - 1:1000 |
| IHC | 1:100 - 1:500 |
| FC | 1:100 - 1:200 |

*Results are sample-specific. Please refer to your local assay conditions and test parameters for reference.

PRODUCT OVERVIEW

| | |
|-------------------|--|
| Description | Mouse monoclonal to ALPL |
| Specificity | Recognizes endogenous levels of ALPL protein |
| Antibody Type | Primary antibody |
| Immunogen | Recombinant fusion protein of human ALPL expressed in E. Coli |
| Purification | This antibody is purified through a protein G column. |
| Molecular Weight | Predicted: 57 kD; Observed: 80 kD |
| Form/Buffer | Mouse IgG1. Liquid in PBS, pH 7.3, 30% glycerol, and 0.01% sodium azide. |
| Alternative Names | Alkaline phosphatase, tissue-nonspecific, isozyme; AP-TNAP; TNSALP; Alkaline phosphatase liver/bone/kidney isozyme |
| Gene Symbol | ALPL |
| Entrez Gene | 249(Human) |
| SwissProt | P05186(Human) |

*AREX continuously optimizes our products. Webpage content may not reflect the latest updates. For inquiries, please contact info@arexbio.com or your local distributor.

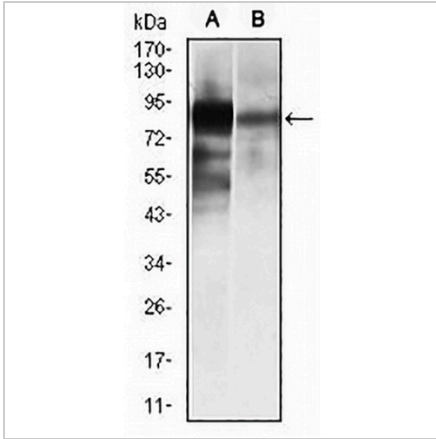
*Clone Number, Reactivity, Source/Host and Clonality can be found in the product name and Key Features section above.

DATASHEET

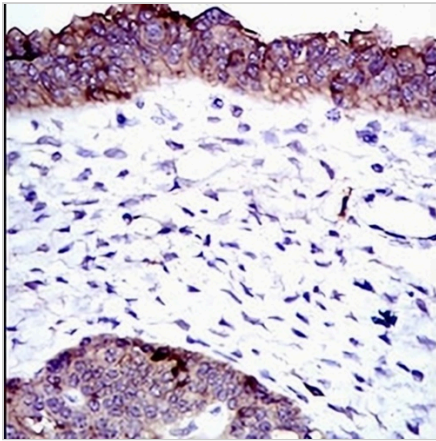
ALPL Mouse Monoclonal Antibody(C2512)

CAT. NO. AMA02124

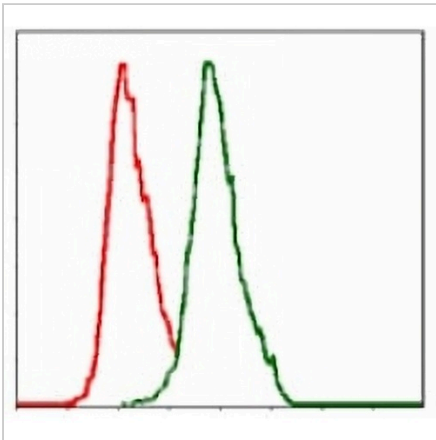
DATA



Western blot analysis of ALPL expression in HeLa (A), NTERA2 (D) whole cell lysates. (Predicted band size: 57 kD; Observed band size: 80 kD)



Immunohistochemical analysis of ALPL staining in human ovarian cancer formalin fixed paraffin embedded tissue section. The section was pre-treated using heat mediated antigen retrieval with sodium citrate buffer (pH 6.0). The section was then incubated with the antibody at room temperature and detected using an HRP conjugated compact polymer system. DAB was used as the chromogen. The section was then counterstained with haematoxylin and mounted with DPX.



Flow cytometric analysis of MCF7 cells using Anti-ALPL Antibody (green) and negative control (red).

STORAGE

Store at 4°C short term. For long term storage, store at -20°C, avoiding freeze/thaw cycles.

NOTE

For Research Use Only. Not for diagnostic, therapeutics, prophylactic or in vivo use.