

DATASHEET

ALPPL2 Mouse Monoclonal Antibody(C2513)

CAT. NO. AMA02125

KEY FEATURES

| | | | |
|---------------|---|---------------|--------------|
| Target | ALPPL2 | Source / Host | Mouse |
| Reactivity | Human | Clonality | Monoclonal |
| Applications | WB, IHC, IF/ICC, FC | Conjugation | Unconjugated |
| Form / Buffer | Mouse IgG2b. Liquid in PBS, pH 7.3, 30% glycerol, and 0.01% sodium azide. | Storage | at-20°C |

BACKGROUND

Alkaline phosphatase that can hydrolyze various phosphate compounds.

APPLICATION

To ensure optimal assay performance, AREX recommends conducting reagent titration tailored to each testing system for optimal detection results.

| | |
|--------|----------------|
| WB | 1:500 - 1:1000 |
| IHC | 1:100 - 1:500 |
| IF/ICC | 1:50 - 1:100 |
| FC | 1:100 - 1:200 |

*Results are sample-specific. Please refer to your local assay conditions and test parameters for reference.

PRODUCT OVERVIEW

| | |
|-------------------|--|
| Description | Mouse monoclonal to ALPPL2 |
| Specificity | Recognizes endogenous levels of ALPPL2 protein |
| Antibody Type | Primary antibody |
| Immunogen | Recombinant fusion protein of human ALPPL2 expressed in E. Coli |
| Purification | This antibody is purified through a protein G column. |
| Molecular Weight | Predicted: 57 kD; Observed: 72 kD |
| Form/Buffer | Mouse IgG2b. Liquid in PBS, pH 7.3, 30% glycerol, and 0.01% sodium azide. |
| Alternative Names | ALPPL; Alkaline phosphatase, placental-like; ALP-1; Alkaline phosphatase Nagao isozyme; Germ cell alkaline phosphatase; GCAP; Placental alkaline phosphatase-like; PLAP-like |
| Gene Symbol | ALPPL2 |
| Entrez Gene | 251(Human) |
| SwissProt | P10696(Human) |

*AREX continuously optimizes our products. Webpage content may not reflect the latest updates. For inquiries, please contact info@arexbio.com or your local distributor.

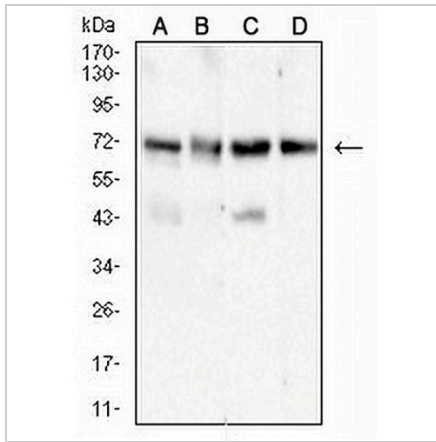
*Clone Number, Reactivity, Source/Host and Clonality can be found in the product name and Key Features section above.

DATASHEET

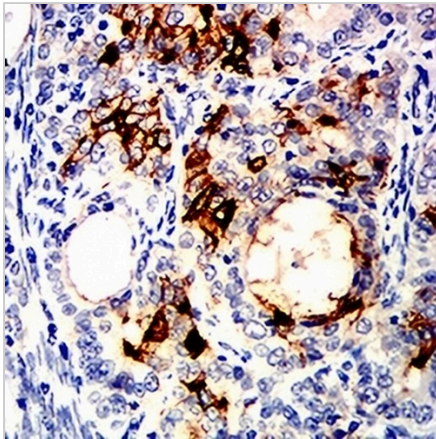
ALPPL2 Mouse Monoclonal Antibody(C2513)

CAT. NO. AMA02125

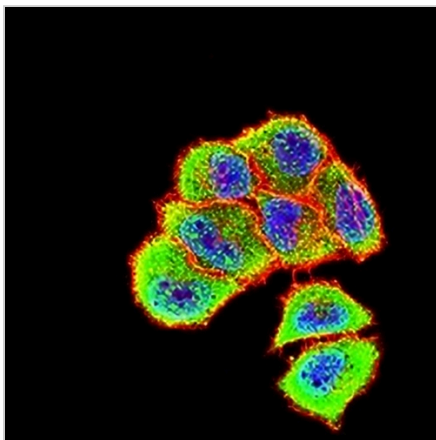
DATA



Western blot analysis of ALPPL2 expression in SKOV3 (A), Hela (B), HepG2 (C), A431 (D) whole cell lysates. (Predicted band size: 57 kD; Observed band size: 72 kD kD)



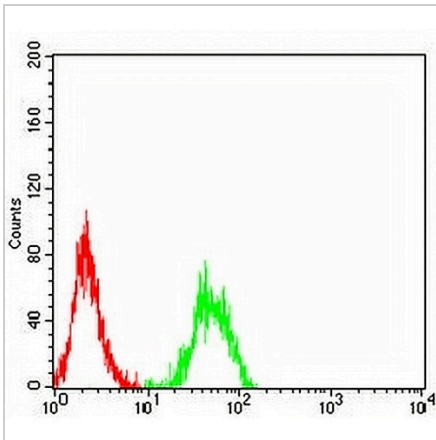
Immunohistochemical analysis of ALPPL2 staining in human cervical cancer formalin fixed paraffin embedded tissue section. The section was pre-treated using heat mediated antigen retrieval with sodium citrate buffer (pH 6.0). The section was then incubated with the antibody at room temperature and detected using an HRP conjugated compact polymer system. DAB was used as the chromogen. The section was then counterstained with haematoxylin and mounted with DPX.



Immunofluorescent analysis of ALPPL2 staining in Hela cells. Formalin-fixed cells were permeabilized with 0.1% Triton X-100 in TBS for 5-10 minutes and blocked with 3% BSA-PBS for 30 minutes at room temperature. Cells were probed with the primary antibody in 3% BSA-PBS and incubated overnight at 4 °C in a hidified chamber. Cells were washed with PBST and incubated with an AREX® Fluor 488 -conjugated secondary antibody (green) in PBS at room temperature in the dark. Phalloidin - AREX® Fluor 594 was used to stain Actin filaments (red). DAPI was used to stain the cell nuclei (blue).

DATASHEET**ALPPL2 Mouse Monoclonal Antibody(C2513)**

CAT. NO. AMA02125

DATA (CONTINUED)

Flow cytometric analysis of Jurkat cells using Anti-ALPPL2 Antibody (green) and negative control (red).

STORAGE

Store at 4°C short term. For long term storage, store at -20°C, avoiding freeze/thaw cycles.

NOTE

For Research Use Only. Not for diagnostic, therapeutics, prophylactic or in vivo use.