

DATASHEET

AMY1A Mouse Monoclonal Antibody(C2514)

CAT. NO. AMA02126

KEY FEATURES

Target	AMY1A	Source / Host	Mouse
Reactivity	Human, Rat	Clonality	Monoclonal
Applications	WB, FC	Conjugation	Unconjugated
Form / Buffer	Mouse IgG1. Liquid in PBS, pH 7.3, 30% glycerol, and 0.01% sodium azide.	Storage	at-20°C

BACKGROUND

Calcium-binding enzyme that initiates starch digestion in the oral cavity . Catalyzes the hydrolysis of internal (1->4)-alpha-D-glucosidic bonds, yielding a mixture of maltose, isomaltose, small amounts of glucose as well as small linear and branched oligosaccharides called dextrans .

APPLICATION

To ensure optimal assay performance, AREX recommends conducting reagent titration tailored to each testing system for optimal detection results.

WB	1:500 - 1:1000
FC	1:100 - 1:200

*Results are sample-specific. Please refer to your local assay conditions and test parameters for reference.

PRODUCT OVERVIEW

Description	Mouse monoclonal to AMY1A
Specificity	Recognizes endogenous levels of AMY1A protein
Antibody Type	Primary antibody
Immunogen	Recombinant fusion protein of human AMY1A expressed in E. Coli
Purification	This antibody is purified through a protein G column.
Molecular Weight	Predicted: 58 kD; Observed: 58 kD
Form/Buffer	Mouse IgG1. Liquid in PBS, pH 7.3, 30% glycerol, and 0.01% sodium azide.
Alternative Names	AMY1; Alpha-amylase 1A; 1,4-alpha-D-glucan glucanohydrolase 1; Salivary alpha-amylase
Gene Symbol	AMY1A
Entrez Gene	276(Human); 24203(Rat)
SwissProt	P0DUB6(Human); Q5I0L0(Rat)

*AREX continuously optimizes our products. Webpage content may not reflect the latest updates. For inquiries, please contact info@arexbio.com or your local distributor.

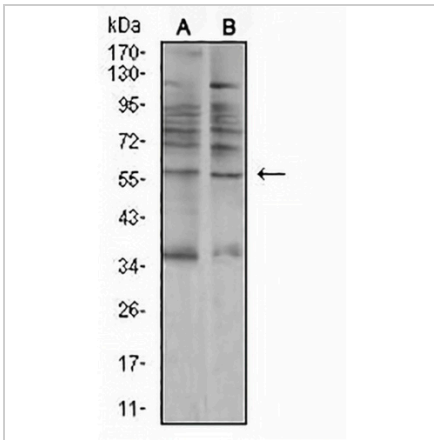
*Clone Number, Reactivity, Source/Host and Clonality can be found in the product name and Key Features section above.

DATASHEET

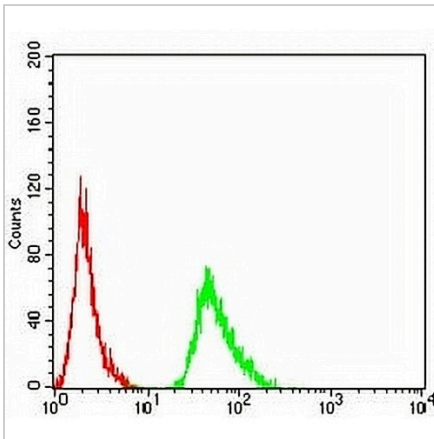
AMY1A Mouse Monoclonal Antibody(C2514)

CAT. NO. AMA02126

DATA



Western blot analysis of AMY1A expression in A549 (A), C6 (B) whole cell lysates.
(Predicted band size: 58 kD; Observed band size: 58 kD)



Flow cytometric analysis of MCF7 cells using Anti-AMY1A Antibody (green) and negative control (red).

STORAGE

Store at 4°C short term. For long term storage, store at -20°C, avoiding freeze/thaw cycles.

NOTE

For Research Use Only. Not for diagnostic, therapeutics, prophylactic or in vivo use.