

DATASHEET

AP2M1 Mouse Monoclonal Antibody(C2518)

CAT. NO. AMA02130

KEY FEATURES

Target	AP2M1	Source / Host	Mouse
Reactivity	Human, Monkey	Clonality	Monoclonal
Applications	WB	Conjugation	Unconjugated
Form / Buffer	Mouse IgG1. Liquid in PBS, pH 7.3, 30% glycerol, and 0.01% sodium azide.	Storage	at-20°C

BACKGROUND

Component of the adaptor protein complex 2 (AP-2) . Adaptor protein complexes function in protein transport via transport vesicles in different membrane traffic pathways . Adaptor protein complexes are vesicle coat components and appear to be involved in cargo selection and vesicle formation . AP-2 is involved in clathrin-dependent endocytosis in which cargo proteins are incorporated into vesicles surrounded by clathrin (clathrin-coated vesicles, CCVs) which are destined for fusion with the early endosome . The clathrin lattice serves as a mechanical scaffold but is itself unable to bind directly to membrane components .

APPLICATION

To ensure optimal assay performance, AREX recommends conducting reagent titration tailored to each testing system for optimal detection results.

WB	1:500 - 1:1000
----	----------------

*Results are sample-specific. Please refer to your local assay conditions and test parameters for reference.

PRODUCT OVERVIEW

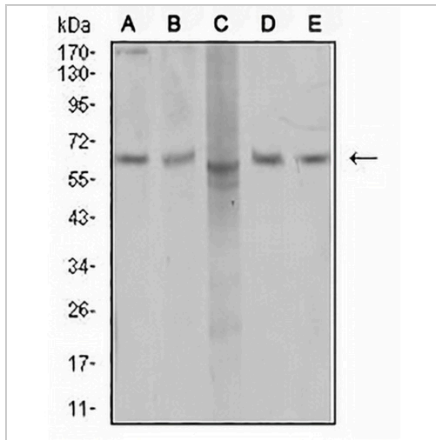
Description	Mouse monoclonal to AP2M1
Specificity	Recognizes endogenous levels of AP2M1 protein
Antibody Type	Primary antibody
Immunogen	Recombinant fusion protein of human AP2M1 expressed in E. Coli
Purification	This antibody is purified through a protein G column.
Molecular Weight	Predicted: 50 kD; Observed: 63 kD
Form/Buffer	Mouse IgG1. Liquid in PBS, pH 7.3, 30% glycerol, and 0.01% sodium azide.
Alternative Names	CLAPM1; KIAA0109; AP-2 complex subunit mu; AP-2 mu chain; Adapter-related protein complex 2 subunit mu; Adaptin-mu2; Adaptor protein complex AP-2 subunit mu; Clathrin assembly protein complex 2 mu medium chain; Clathrin coat assembly protein AP50; Clathrin coat-associated protein AP50; HA2 50 kDa subunit; Plasma membrane adaptor AP-2 50 kDa protein
Gene Symbol	AP2M1
Entrez Gene	1173(Human)
SwissProt	Q96CW1(Human)

*AREX continuously optimizes our products. Webpage content may not reflect the latest updates. For inquiries, please contact info@arexbio.com or your local distributor.

*Clone Number, Reactivity, Source/Host and Clonality can be found in the product name and Key Features section above.

DATASHEET**AP2M1 Mouse Monoclonal Antibody(C2518)**

CAT. NO. AMA02130

DATA

Western blot analysis of AP2M1 expression in COS7 (A), SKBr3 (B), MCF7 (C), T47D (D), HEK293 (E) whole cell lysates. (Predicted band size: 50 kD; Observed band size: 63 kD)

STORAGE

Store at 4°C short term. For long term storage, store at -20°C, avoiding freeze/thaw cycles.

NOTE

For Research Use Only. Not for diagnostic, therapeutics, prophylactic or in vivo use.