

## DATASHEET

# ARFGAP1 Mouse Monoclonal Antibody(C2521)

CAT. NO. AMA02133

### KEY FEATURES

Target	ARFGAP1	Source / Host	Mouse
Reactivity	Human, Mouse	Clonality	Monoclonal
Applications	WB, FC	Conjugation	Unconjugated
Form / Buffer	Mouse IgG2b. Liquid in PBS, pH 7.3, 30% glycerol, and 0.01% sodium azide.	Storage	at-20°C

### BACKGROUND

GTPase-activating protein (GAP) for the ADP ribosylation factor 1 (ARF1). Involved in membrane trafficking and /or vesicle transport. Promotes hydrolysis of the ARF1-bound GTP and thus, is required for the dissociation of coat proteins from Golgi-derived membranes and vesicles, a prerequisite for vesicle's fusion with target compartment. Probably regulates ARF1-mediated transport via its interaction with the KDELR proteins and TMED2. Overexpression induces the redistribution of the entire Golgi complex to the endoplasmic reticulum, as when ARF1 is deactivated. Its activity is stimulated by phosphoinositides and inhibited by phosphatidylcholine .

### APPLICATION

To ensure optimal assay performance, AREX recommends conducting reagent titration tailored to each testing system for optimal detection results.

WB	1:500 - 1:1000
FC	1:100 - 1:200

\*Results are sample-specific. Please refer to your local assay conditions and test parameters for reference.

### PRODUCT OVERVIEW

Description	Mouse monoclonal to ARFGAP1
Specificity	Recognizes endogenous levels of ARFGAP1 protein
Antibody Type	Primary antibody
Immunogen	Recombinant fusion protein of human ARFGAP1 expressed in E. Coli
Purification	This antibody is purified through a protein G column.
Molecular Weight	Predicted: 45 kD; Observed: 45 kD
Form/Buffer	Mouse IgG2b. Liquid in PBS, pH 7.3, 30% glycerol, and 0.01% sodium azide.
Alternative Names	ARF1GAP; ADP-ribosylation factor GTPase-activating protein 1; ARF GAP 1; ADP-ribosylation factor 1 GTPase-activating protein; ARF1 GAP; ARF1-directed GTPase-activating protein
Gene Symbol	ARFGAP1
Entrez Gene	55738(Human); 246310(Rat)
SwissProt	Q8N6T3(Human); Q9EPJ9(Mouse)

\*AREX continuously optimizes our products. Webpage content may not reflect the latest updates. For inquiries, please contact [info@arexbio.com](mailto:info@arexbio.com) or your local distributor.

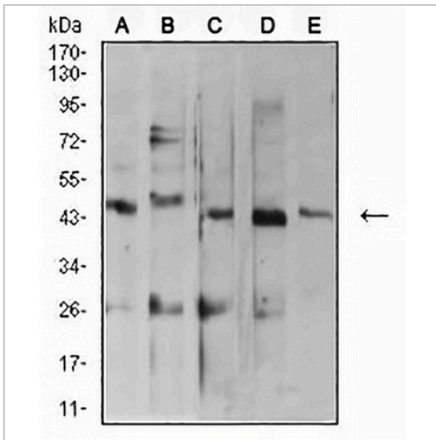
\*Clone Number, Reactivity, Source/Host and Clonality can be found in the product name and Key Features section above.

**DATASHEET**

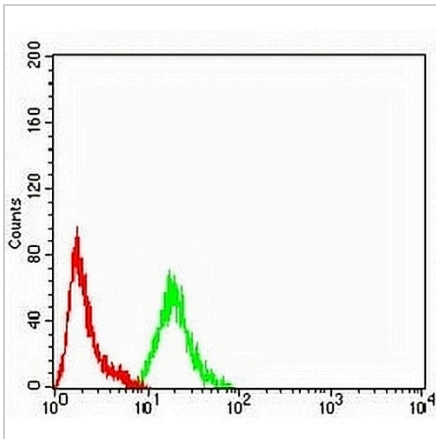
**ARFGAP1 Mouse Monoclonal Antibody(C2521)**

CAT. NO. AMA02133

**DATA**



Western blot analysis of ARFGAP1 expression in MOLT4 (A), C2C12 (B), HepG2 (C), MCF7 (D), Lncap (E) whole cell lysates. (Predicted band size: 45 kD; Observed band size: 45 kD)



Flow cytometric analysis of HepG2 cells using Anti-ARFGAP1 Antibody (green) and negative control (red).

**STORAGE**

Store at 4°C short term. For long term storage, store at -20°C, avoiding freeze/thaw cycles.

**NOTE**

For Research Use Only. Not for diagnostic, therapeutics, prophylactic or in vivo use.