

DATASHEET

ASF1B Mouse Monoclonal Antibody(C2523)

CAT. NO. AMA02135

KEY FEATURES

Target	ASF1B	Source / Host	Mouse
Reactivity	Human, Mouse, Monkey	Clonality	Monoclonal
Applications	WB, FC	Conjugation	Unconjugated
Form / Buffer	Mouse IgG1. Liquid in PBS, pH 7.3, 30% glycerol, and 0.01% sodium azide.	Storage	at-20°C

BACKGROUND

Histone chaperone that facilitates histone deposition and histone exchange and removal during nucleosome assembly and disassembly. Cooperates with chromatin assembly factor 1 (CAF-1) to promote replication-dependent chromatin assembly. Also involved in the nuclear import of the histone H3-H4 dimer together with importin-4 (IPO4): specifically recognizes and binds newly synthesized histones with the monomethylation of H3 'Lys-9' (H3K9me1) and diacetylation at 'Lys-5' and 'Lys-12' of H4 (H4K5K12ac) marks in the cytosol. Does not participate in replication-independent nucleosome deposition which is mediated by ASF1A and HIRA. Required for gonad development.

APPLICATION

To ensure optimal assay performance, AREX recommends conducting reagent titration tailored to each testing system for optimal detection results.

WB	1:500 - 1:1000
FC	1:100 - 1:200

*Results are sample-specific. Please refer to your local assay conditions and test parameters for reference.

PRODUCT OVERVIEW

Description	Mouse monoclonal to ASF1B
Specificity	Recognizes endogenous levels of ASF1B protein
Antibody Type	Primary antibody
Immunogen	Recombinant fusion protein of human ASF1B expressed in E. Coli
Purification	This antibody is purified through a protein G column.
Molecular Weight	Predicted: 22 kD; Observed: 55 kD
Form/Buffer	Mouse IgG1. Liquid in PBS, pH 7.3, 30% glycerol, and 0.01% sodium azide.
Alternative Names	Histone chaperone ASF1B; Anti-silencing function protein 1 homolog B; hAsf1; hAsf1b; CCG1-interacting factor A-II; CIA-II; hCIA-II
Gene Symbol	ASF1B
Entrez Gene	55723(Human)
SwissProt	Q9NVP2(Human); Q9DAP7(Mouse)

*AREX continuously optimizes our products. Webpage content may not reflect the latest updates. For inquiries, please contact info@arexbio.com or your local distributor.

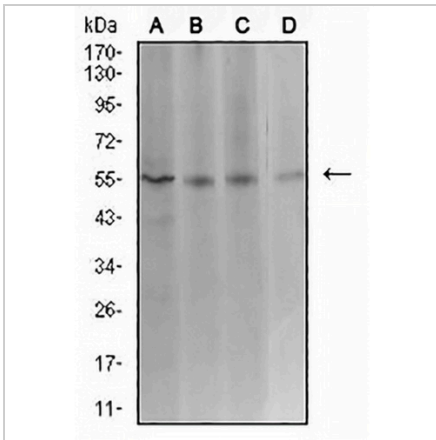
*Clone Number, Reactivity, Source/Host and Clonality can be found in the product name and Key Features section above.

DATASHEET

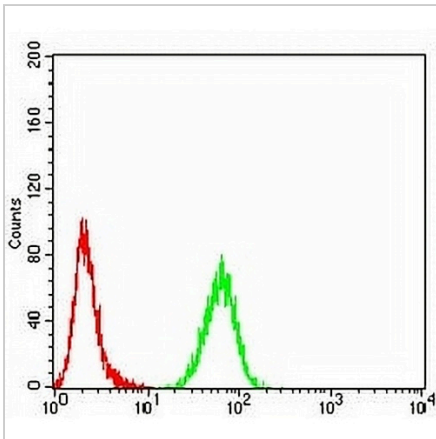
ASF1B Mouse Monoclonal Antibody(C2523)

CAT. NO. AMA02135

DATA



Western blot analysis of ASF1B expression in HeLa (A), COS7 (B), HCT116 (C), CHO3D10 (D) whole cell lysates. (Predicted band size: 22 kD; Observed band size: 55 kD)



Flow cytometric analysis of K562 cells using Anti-ASF1B Antibody (green) and negative control (red).

STORAGE

Store at 4°C short term. For long term storage, store at -20°C, avoiding freeze/thaw cycles.

NOTE

For Research Use Only. Not for diagnostic, therapeutics, prophylactic or in vivo use.