

DATASHEET

ASH2L Mouse Monoclonal Antibody(C2524)

CAT. NO. AMA02136

KEY FEATURES

Target	ASH2L	Source / Host	Mouse
Reactivity	Human, Mouse	Clonality	Monoclonal
Applications	WB, IHC, FC	Conjugation	Unconjugated
Form / Buffer	Mouse IgG1. Liquid in PBS, pH 7.3, 30% glycerol, and 0.01% sodium azide.	Storage	at-20°C

BACKGROUND

Transcriptional regulator . Component or associated component of some histone methyltransferase complexes which regulates transcription through recruitment of those complexes to gene promoters . Component of the Set1/Ash2 histone methyltransferase (HMT) complex, a complex that specifically methylates 'Lys-4' of histone H3, but not if the neighboring 'Lys-9' residue is already methylated . As part of the MLL1/MLL complex it is involved in methylation and dimethylation at 'Lys-4' of histone H3 . May play a role in hematopoiesis . In association with RBBP5 and WDR5, stimulates the histone methyltransferase activities of KMT2A, KMT2B, KMT2C, KMT2D, SETD1A and SETD1B .

APPLICATION

To ensure optimal assay performance, AREX recommends conducting reagent titration tailored to each testing system for optimal detection results.

WB	1:500 - 1:1000
IHC	1:100 - 1:500
FC	1:100 - 1:200

*Results are sample-specific. Please refer to your local assay conditions and test parameters for reference.

PRODUCT OVERVIEW

Description	Mouse monoclonal to ASH2L
Specificity	Recognizes endogenous levels of ASH2L protein
Antibody Type	Primary antibody
Immunogen	Recombinant fusion protein of human ASH2L expressed in E. Coli
Purification	This antibody is purified through a protein G column.
Molecular Weight	Predicted: 69 kD; Observed: 63 kD
Form/Buffer	Mouse IgG1. Liquid in PBS, pH 7.3, 30% glycerol, and 0.01% sodium azide.
Alternative Names	ASH2L1; Set1/Ash2 histone methyltransferase complex subunit ASH2; ASH2-like protein
Gene Symbol	ASH2L
Entrez Gene	9070(Human)
SwissProt	Q9UBL3(Human); Q91X20(Mouse)

*AREX continuously optimizes our products. Webpage content may not reflect the latest updates. For inquiries, please contact info@arexbio.com or your local distributor.

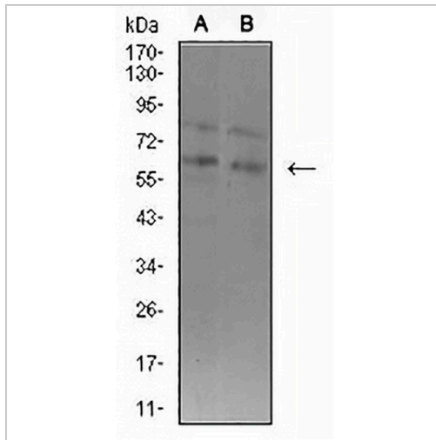
*Clone Number, Reactivity, Source/Host and Clonality can be found in the product name and Key Features section above.

DATASHEET

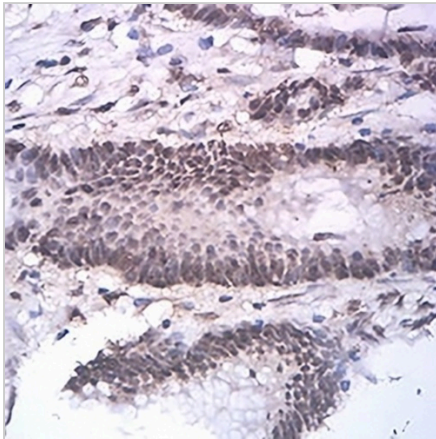
ASH2L Mouse Monoclonal Antibody(C2524)

CAT. NO. AMA02136

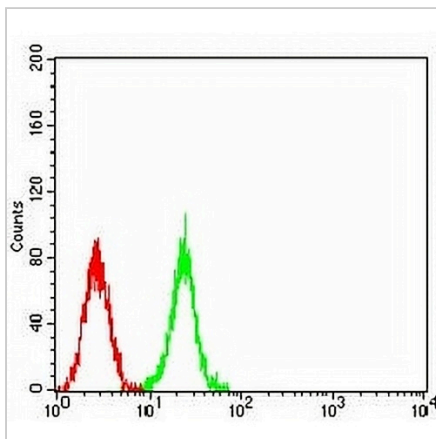
DATA



Western blot analysis of ASH2L expression in K562 (A), F9 (B) whole cell lysates. (Predicted band size: 69 kD; Observed band size: 63 kD)



Immunohistochemical analysis of ASH2L staining in human colon cancer formalin fixed paraffin embedded tissue section. The section was pre-treated using heat mediated antigen retrieval with sodium citrate buffer (pH 6.0). The section was then incubated with the antibody at room temperature and detected using an HRP conjugated compact polymer system. DAB was used as the chromogen. The section was then counterstained with haematoxylin and mounted with DPX.



Flow cytometric analysis of K562 cells using Anti-ASH2L Antibody (green) and negative control (red).

STORAGE

Store at 4°C short term. For long term storage, store at -20°C, avoiding freeze/thaw cycles.

NOTE

For Research Use Only. Not for diagnostic, therapeutics, prophylactic or in vivo use.