

**DATASHEET**

**ASS1 Mouse Monoclonal Antibody(C2526)**

CAT. NO. AMA02138

**KEY FEATURES**

Target	ASS1	Source / Host	Mouse
Reactivity	Human, Mouse, Monkey	Clonality	Monoclonal
Applications	WB, IHC	Conjugation	Unconjugated
Form / Buffer	Mouse IgG1. Liquid in PBS, pH 7.3, 30% glycerol, and 0.01% sodium azide.	Storage	at-20°C

**BACKGROUND**

One of the enzymes of the urea cycle, the metabolic pathway transforming neurotoxic ammonia produced by protein catabolism into innocuous urea in the liver of ureotelic animals. Catalyzes the formation of arginosuccinate from aspartate, citrulline and ATP and together with ASL it is responsible for the biosynthesis of arginine in most body tissues.

**APPLICATION**

To ensure optimal assay performance, AREX recommends conducting reagent titration tailored to each testing system for optimal detection results.

WB	1:500 - 1:1000
IHC	1:100 - 1:500

\*Results are sample-specific. Please refer to your local assay conditions and test parameters for reference.

**PRODUCT OVERVIEW**

Description	Mouse monoclonal to ASS1
Specificity	Recognizes endogenous levels of ASS1 protein
Antibody Type	Primary antibody
Immunogen	Recombinant fusion protein of human ASS1 expressed in E. Coli
Purification	This antibody is purified through a protein G column.
Molecular Weight	Predicted: 47 kD; Observed: 47 kD
Form/Buffer	Mouse IgG1. Liquid in PBS, pH 7.3, 30% glycerol, and 0.01% sodium azide.
Alternative Names	ASS; Argininosuccinate synthase; Citrulline--aspartate ligase
Gene Symbol	ASS1
Entrez Gene	445(Human); 25698(Rat)
SwissProt	P00966(Human); P16460(Mouse)

\*AREX continuously optimizes our products. Webpage content may not reflect the latest updates. For inquiries, please contact [info@arexbio.com](mailto:info@arexbio.com) or your local distributor.

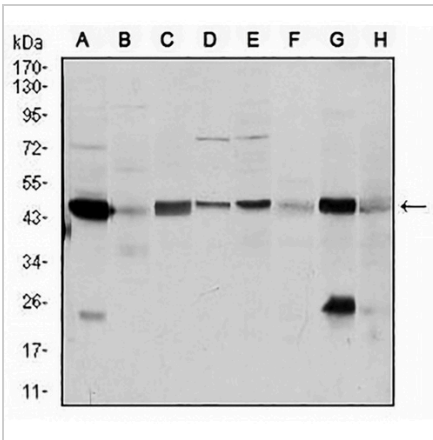
\*Clone Number, Reactivity, Source/Host and Clonality can be found in the product name and Key Features section above.

**DATASHEET**

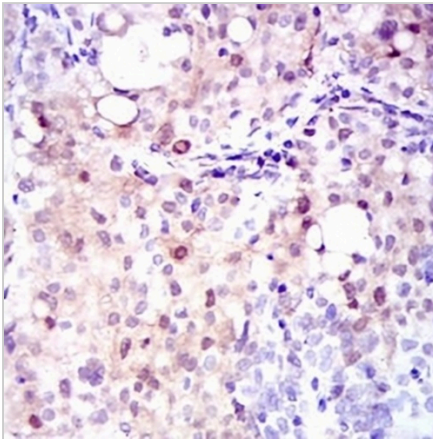
**ASS1 Mouse Monoclonal Antibody(C2526)**

CAT. NO. AMA02138

**DATA**



Western blot analysis of ASS1 expression in A431 (A), Raji (B), MOLT4 (C), Jurkat (D), A549 (E), NIH/3T3 (F), PC12 (G), COS7 (H) whole cell lysates. (Predicted band size: 47 kD; Observed band size: 47 kD kD)



Immunohistochemical analysis of ASS1 staining in human cervical cancer formalin fixed paraffin embedded tissue section. The section was pre-treated using heat mediated antigen retrieval with sodium citrate buffer (pH 6.0). The section was then incubated with the antibody at room temperature and detected using an HRP conjugated compact polymer system. DAB was used as the chromogen. The section was then counterstained with haematoxylin and mounted with DPX.

**STORAGE**

Store at 4°C short term. For long term storage, store at -20°C, avoiding freeze/thaw cycles.

**NOTE**

For Research Use Only. Not for diagnostic, therapeutics, prophylactic or in vivo use.