

DATASHEET

ATG10 Mouse Monoclonal Antibody(C2528)

CAT. NO. AMA02140

KEY FEATURES

Target	ATG10	Source / Host	Mouse
Reactivity	Human	Clonality	Monoclonal
Applications	WB, FC	Conjugation	Unconjugated
Form / Buffer	Mouse IgG1. Liquid in PBS, pH 7.3, 30% glycerol, and 0.01% sodium azide.	Storage	at-20°C

BACKGROUND

E2-like enzyme involved in autophagy. Acts as an E2-like enzyme that catalyzes the conjugation of ATG12 to ATG5. ATG12 conjugation to ATG5 is required for autophagy. Likely serves as an ATG5-recognition molecule. Not involved in ATG12 conjugation to ATG3 . Plays a role in adenovirus-mediated cell lysis.

APPLICATION

To ensure optimal assay performance, AREX recommends conducting reagent titration tailored to each testing system for optimal detection results.

WB	1:500 - 1:1000
FC	1:100 - 1:200

*Results are sample-specific. Please refer to your local assay conditions and test parameters for reference.

PRODUCT OVERVIEW

Description	Mouse monoclonal to ATG10
Specificity	Recognizes endogenous levels of ATG10 protein
Antibody Type	Primary antibody
Immunogen	Recombinant fusion protein of human ATG10 expressed in E. Coli
Purification	This antibody is purified through a protein G column.
Molecular Weight	Predicted: 25 kD; Observed: 38 kD kD
Form/Buffer	Mouse IgG1. Liquid in PBS, pH 7.3, 30% glycerol, and 0.01% sodium azide.
Alternative Names	APG10L; Ubiquitin-like-conjugating enzyme ATG10; Autophagy-related protein 10; APG10-like
Gene Symbol	ATG10
Entrez Gene	83734(Human)
SwissProt	Q9H0Y0(Human)

*AREX continuously optimizes our products. Webpage content may not reflect the latest updates. For inquiries, please contact info@arexbio.com or your local distributor.

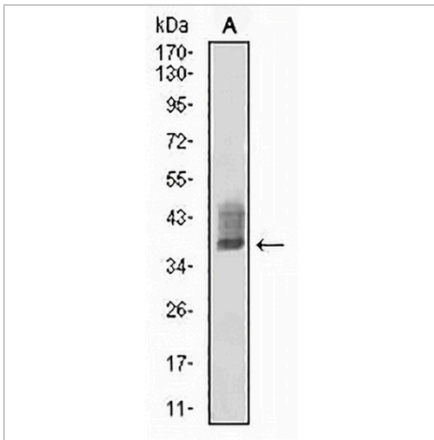
*Clone Number, Reactivity, Source/Host and Clonality can be found in the product name and Key Features section above.

DATASHEET

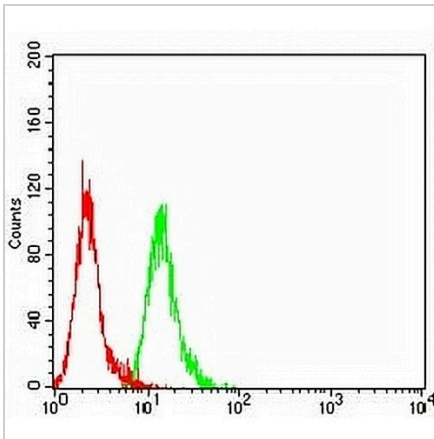
ATG10 Mouse Monoclonal Antibody(C2528)

CAT. NO. AMA02140

DATA



Western blot analysis of ATG10 expression in K562 (A) whole cell lysates. (Predicted band size: 25 kD; Observed band size: 38 kD)



Flow cytometric analysis of HeLa cells using Anti-ATG10 Antibody (green) and negative control (red).

STORAGE

Store at 4°C short term. For long term storage, store at -20°C, avoiding freeze/thaw cycles.

NOTE

For Research Use Only. Not for diagnostic, therapeutics, prophylactic or in vivo use.