

DATASHEET
ATG16L1 Mouse Monoclonal Antibody(C2529)
CAT. NO. AMA02141
KEY FEATURES

Target	ATG16L1	Source / Host	Mouse
Reactivity	Human, Mouse, Rat	Clonality	Monoclonal
Applications	WB, FC	Conjugation	Unconjugated
Form / Buffer	Mouse IgG1. Liquid in PBS, pH 7.3, 30% glycerol, and 0.01% sodium azide.	Storage	at-20°C

BACKGROUND

Plays an essential role in both canonical and non-canonical autophagy: interacts with ATG12-ATG5 to mediate the lipidation to ATG8 family proteins (MAP1LC3A, MAP1LC3B, MAP1LC3C, GABARAP1, GABARAP2 and GABARAP) . Acts as a molecular hub, coordinating autophagy pathways via distinct domains that support either canonical or non-canonical signaling . During canonical autophagy, interacts with ATG12-ATG5 to mediate the conjugation of phosphatidylethanolamine (PE) to ATG8 proteins, to produce a membrane-bound activated form of ATG8 . Thereby, controls the elongation of the nascent autophagosomal membrane . As part of the ATG8 conjugation system with ATG5 and ATG12, required for recruitment of LRRK2 to stressed lysosomes and induction of LRRK2 kinase activity in response to lysosomal stress .

APPLICATION

To ensure optimal assay performance, AREX recommends conducting reagent titration tailored to each testing system for optimal detection results.

WB	1:500 - 1:1000
FC	1:100 - 1:200

*Results are sample-specific. Please refer to your local assay conditions and test parameters for reference.

PRODUCT OVERVIEW

Description	Mouse monoclonal to ATG16L1
Specificity	Recognizes endogenous levels of ATG16L1 protein
Antibody Type	Primary antibody
Immunogen	Recombinant fusion protein of human ATG16L1 expressed in E. Coli
Purification	This antibody is purified through a protein G column.
Molecular Weight	Predicted: 68 kD; Observed: 72 kD kD
Form/Buffer	Mouse IgG1. Liquid in PBS, pH 7.3, 30% glycerol, and 0.01% sodium azide.
Alternative Names	APG16L; Autophagy-related protein 16-1; APG16-like 1
Gene Symbol	ATG16L1
Entrez Gene	55054(Human); 77040(Mouse)
SwissProt	Q676U5(Human); Q8C0J2(Mouse)

*AREX continuously optimizes our products. Webpage content may not reflect the latest updates. For inquiries, please contact info@arexbio.com or your local distributor.

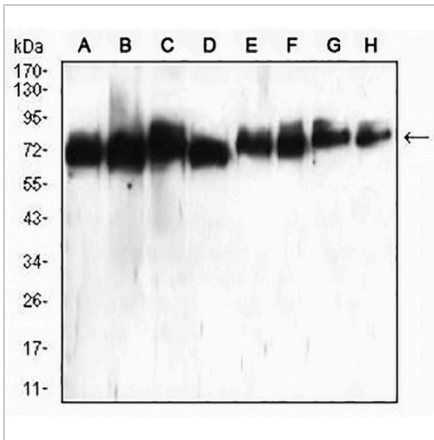
*Clone Number, Reactivity, Source/Host and Clonality can be found in the product name and Key Features section above.

DATASHEET

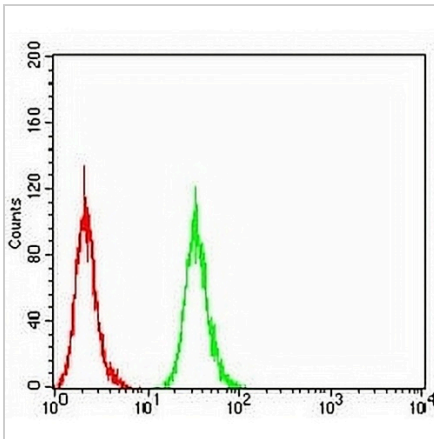
ATG16L1 Mouse Monoclonal Antibody(C2529)

CAT. NO. AMA02141

DATA



Western blot analysis of ATG16L1 expression in HeLa (A), Raji (B), PANC1 (C), Jurkat (D), PC12 (E), HepG2 (F), HEK293 (G), NIH3T3 (H) whole cell lysates. (Predicted band size: 68 kD; Observed band size: 72 kD)



Flow cytometric analysis of HeLa cells using Anti-ATG16L1 Antibody (green) and negative control (red).

STORAGE

Store at 4°C short term. For long term storage, store at -20°C, avoiding freeze/thaw cycles.

NOTE

For Research Use Only. Not for diagnostic, therapeutics, prophylactic or in vivo use.