

DATASHEET

ATG4B Mouse Monoclonal Antibody(C2531)

CAT. NO. AMA02143

KEY FEATURES

Target	ATG4B	Source / Host	Mouse
Reactivity	Human, Mouse	Clonality	Monoclonal
Applications	WB, FC	Conjugation	Unconjugated
Form / Buffer	Mouse IgG1. Liquid in PBS, pH 7.3, 30% glycerol, and 0.01% sodium azide.	Storage	at-20°C

BACKGROUND

Cysteine protease that plays a key role in autophagy by mediating both proteolytic activation and delipidation of ATG8 family proteins. Required for canonical autophagy (macroautophagy), non-canonical autophagy as well as for mitophagy. The protease activity is required for proteolytic activation of ATG8 family proteins: cleaves the C-terminal amino acid of ATG8 proteins MAP1LC3A, MAP1LC3B, MAP1LC3C, GABARAPL1, GABARAPL2 and GABARAP, to reveal a C-terminal glycine. Exposure of the glycine at the C-terminus is essential for ATG8 proteins conjugation to phosphatidylethanolamine (PE) and insertion to membranes, which is necessary for autophagy.

APPLICATION

To ensure optimal assay performance, AREX recommends conducting reagent titration tailored to each testing system for optimal detection results.

WB	1:500 - 1:1000
FC	1:100 - 1:200

*Results are sample-specific. Please refer to your local assay conditions and test parameters for reference.

PRODUCT OVERVIEW

Description	Mouse monoclonal to ATG4B
Specificity	Recognizes endogenous levels of ATG4B protein
Antibody Type	Primary antibody
Immunogen	Recombinant fusion protein of human ATG4B expressed in E. Coli
Purification	This antibody is purified through a protein G column.
Molecular Weight	Predicted: 44 kD; Observed: 43 kD
Form/Buffer	Mouse IgG1. Liquid in PBS, pH 7.3, 30% glycerol, and 0.01% sodium azide.
Alternative Names	APG4B; AUTL1; KIAA0943; Cysteine protease ATG4B; AUT-like 1 cysteine endopeptidase; Autophagin-1; Autophagy-related cysteine endopeptidase 1; Autophagy-related protein 4 homolog B; hAPG4B
Gene Symbol	ATG4B
Entrez Gene	23192(Human)
SwissProt	Q9Y4P1(Human); Q8BGE6(Mouse)

*AREX continuously optimizes our products. Webpage content may not reflect the latest updates. For inquiries, please contact info@arexbio.com or your local distributor.

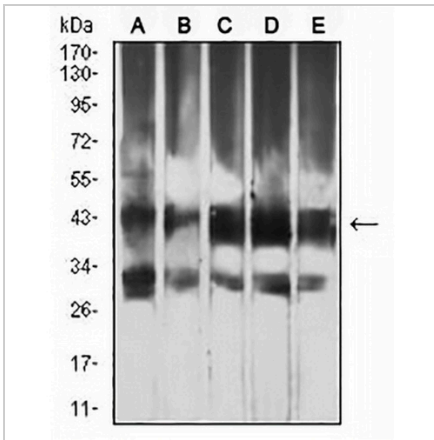
*Clone Number, Reactivity, Source/Host and Clonality can be found in the product name and Key Features section above.

DATASHEET

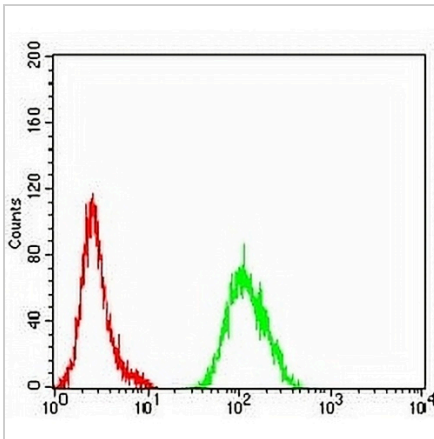
ATG4B Mouse Monoclonal Antibody(C2531)

CAT. NO. AMA02143

DATA



Western blot analysis of ATG4B expression in HeLa (A), RAW264.7 (B), Ramos (C), Jurkat (D), HepG2 (E) whole cell lysates. (Predicted band size: 44 kD; Observed band size: 43 kD)



Flow cytometric analysis of HeLa cells using Anti-ATG4B Antibody (green) and negative control (red).

STORAGE

Store at 4°C short term. For long term storage, store at -20°C, avoiding freeze/thaw cycles.

NOTE

For Research Use Only. Not for diagnostic, therapeutics, prophylactic or in vivo use.