

DATASHEET

ATG4C Mouse Monoclonal Antibody(C2532)

CAT. NO. AMA02144

KEY FEATURES

Target	ATG4C	Source / Host	Mouse
Reactivity	Human	Clonality	Monoclonal
Applications	WB	Conjugation	Unconjugated
Form / Buffer	Mouse IgG1. Liquid in PBS, pH 7.3, 30% glycerol, and 0.01% sodium azide.	Storage	at-20°C

BACKGROUND

Cysteine protease that plays a key role in autophagy by mediating both proteolytic activation and delipidation of ATG8 family proteins . The protease activity is required for proteolytic activation of ATG8 family proteins: cleaves the C-terminal amino acid of ATG8 proteins MAP1LC3 and GABARAPL2, to reveal a C-terminal glycine . Exposure of the glycine at the C-terminus is essential for ATG8 proteins conjugation to phosphatidylethanolamine (PE) and insertion to membranes, which is necessary for autophagy . In addition to the protease activity, also mediates delipidation of ATG8 family proteins . Catalyzes delipidation of PE-conjugated forms of ATG8 proteins during macroautophagy .

APPLICATION

To ensure optimal assay performance, AREX recommends conducting reagent titration tailored to each testing system for optimal detection results.

WB	1:500 - 1:1000
----	----------------

*Results are sample-specific. Please refer to your local assay conditions and test parameters for reference.

PRODUCT OVERVIEW

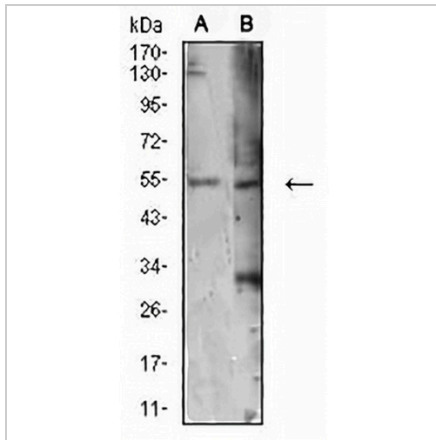
Description	Mouse monoclonal to ATG4C
Specificity	Recognizes endogenous levels of ATG4C protein
Antibody Type	Primary antibody
Immunogen	Recombinant fusion protein of human ATG4C expressed in E. Coli
Purification	This antibody is purified through a protein G column.
Molecular Weight	Predicted: 53 kD; Observed: 55 kD kD
Form/Buffer	Mouse IgG1. Liquid in PBS, pH 7.3, 30% glycerol, and 0.01% sodium azide.
Alternative Names	APG4C; AUTL1; AUTL3; Cysteine protease ATG4C; AUT-like 3 cysteine endopeptidase; Autophagin-3; Autophagy-related cysteine endopeptidase 3; Autophagy-related protein 4 homolog C
Gene Symbol	ATG4C
Entrez Gene	84938(Human)
SwissProt	Q96DT6(Human)

*AREX continuously optimizes our products. Webpage content may not reflect the latest updates. For inquiries, please contact info@arexbio.com or your local distributor.

*Clone Number, Reactivity, Source/Host and Clonality can be found in the product name and Key Features section above.

DATASHEET**ATG4C Mouse Monoclonal Antibody(C2532)**

CAT. NO. AMA02144

DATA

Western blot analysis of ATG4C expression in HEK293 (A), MOLT4 (B) whole cell lysates. (Predicted band size: 53 kD; Observed band size: 55 kD)

STORAGE

Store at 4°C short term. For long term storage, store at -20°C, avoiding freeze/thaw cycles.

NOTE

For Research Use Only. Not for diagnostic, therapeutics, prophylactic or in vivo use.