

DATASHEET

SERCA1 Mouse Monoclonal Antibody(C2535)

CAT. NO. AMA02147

KEY FEATURES

Target	SERCA1	Source / Host	Mouse
Reactivity	Human, Mouse, Monkey	Clonality	Monoclonal
Applications	WB, FC	Conjugation	Unconjugated
Form / Buffer	Mouse IgG1. Liquid in PBS, pH 7.3, 30% glycerol, and 0.01% sodium azide.	Storage	at-20°C

BACKGROUND

Key regulator of striated muscle performance by acting as the major Ca(2+) ATPase responsible for the reuptake of cytosolic Ca(2+) into the sarcoplasmic reticulum. Catalyzes the hydrolysis of ATP coupled with the translocation of calcium from the cytosol to the sarcoplasmic reticulum lumen . Contributes to calcium sequestration involved in muscular excitation/contraction ATPase responsible for the reuptake of cytosolic Ca(2+) into the sarcoplasmic reticulum. Catalyzes the hydrolysis of ATP coupled with the translocation of calcium from the cytosol to the sarcoplasmic reticulum lumen . Contributes to calcium sequestration involved in muscular excitation/contraction .

APPLICATION

To ensure optimal assay performance, AREX recommends conducting reagent titration tailored to each testing system for optimal detection results.

WB	1:500 - 1:1000
FC	1:100 - 1:200

*Results are sample-specific. Please refer to your local assay conditions and test parameters for reference.

PRODUCT OVERVIEW

Description	Mouse monoclonal to SERCA1
Specificity	Recognizes endogenous levels of SERCA1 protein
Antibody Type	Primary antibody
Immunogen	Recombinant fusion protein of human SERCA1 expressed in E. Coli
Purification	This antibody is purified through a protein G column.
Molecular Weight	Predicted: 110 kD; Observed: 110 kD kD
Form/Buffer	Mouse IgG1. Liquid in PBS, pH 7.3, 30% glycerol, and 0.01% sodium azide.
Alternative Names	SarcoplasmIC,/endoplasmIC, retIC,ulum calcium ATPase 1; SERCA1; SR Ca(2+)-ATPase 1; Calcium pump 1; Calcium-transporting ATPase sarcoplasmIC, retIC,ulum type, fast twitch skeletal muscle isoform; EndoplasmIC, retIC,ulum class 1/2 Ca(2+) ATPase
Gene Symbol	ATP2A1
Entrez Gene	487(Human); 116601(Rat)
SwissProt	O14983(Human); Q8R429(Mouse)

*AREX continuously optimizes our products. Webpage content may not reflect the latest updates. For inquiries, please contact info@arexbio.com or your local distributor.

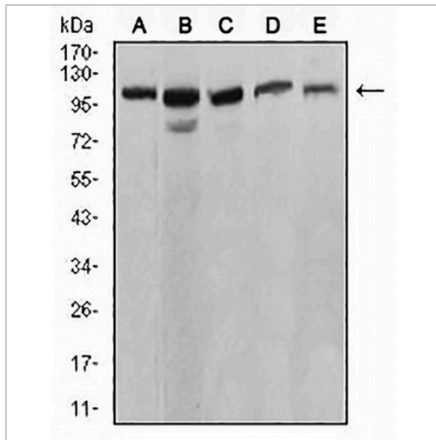
*Clone Number, Reactivity, Source/Host and Clonality can be found in the product name and Key Features section above.

DATASHEET

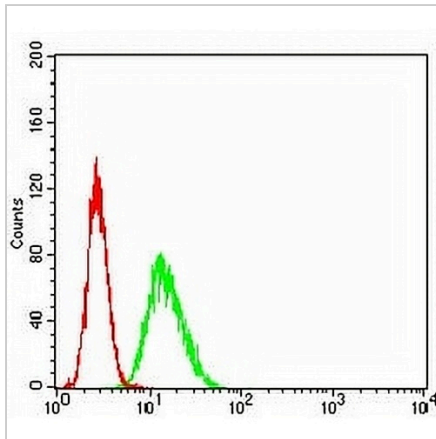
SERCA1 Mouse Monoclonal Antibody(C2535)

CAT. NO. AMA02147

DATA



Western blot analysis of SERCA1 expression in C2C12 (A), COS7 (B), HeLa (C), K562 (D), Jurkat (E) whole cell lysates. (Predicted band size: 110 kD; Observed band size: 110 kD)



Flow cytometric analysis of HeLa cells using Anti-SERCA1 Antibody (green) and negative control (red).

STORAGE

Store at 4°C short term. For long term storage, store at -20°C, avoiding freeze/thaw cycles.

NOTE

For Research Use Only. Not for diagnostic, therapeutics, prophylactic or in vivo use.