

**DATASHEET**

**ATP6AP1 Mouse Monoclonal Antibody(C2537)**

CAT. NO. AMA02149

**KEY FEATURES**

Target	ATP6AP1	Source / Host	Mouse
Reactivity	Human, Mouse	Clonality	Monoclonal
Applications	WB, FC	Conjugation	Unconjugated
Form / Buffer	Mouse IgG1. Liquid in PBS, pH 7.3, 30% glycerol, and 0.01% sodium azide.	Storage	at-20°C

**BACKGROUND**

Accessory subunit of the proton-transporting vacuolar (V)-ATPase protein pump, which is required for luminal acidification of secretory vesicles -ATPase protein pump, which is required for luminal acidification of secretory vesicles . Guides the V-type ATPase into specialized subcellular compartments, such as neuroendocrine regulated secretory vesicles or the ruffled border of the osteoclast, thereby regulating its activity . Involved in membrane trafficking and Ca(2+)-dependent membrane fusion . May play a role in the assembly of the V-type ATPase complex (Probable). In aerobic conditions, involved in intracellular iron homeostasis, thus triggering the activity of Fe(2+) prolyl hydroxylase (PHD) enzymes, and leading to HIF1A hydroxylation and subsequent proteasomal degradation .

**APPLICATION**

To ensure optimal assay performance, AREX recommends conducting reagent titration tailored to each testing system for optimal detection results.

WB	1:500 - 1:1000
FC	1:100 - 1:200

\*Results are sample-specific. Please refer to your local assay conditions and test parameters for reference.

**PRODUCT OVERVIEW**

Description	Mouse monoclonal to ATP6AP1
Specificity	Recognizes endogenous levels of ATP6AP1 protein
Antibody Type	Primary antibody
Immunogen	Recombinant fusion protein of human ATP6AP1 expressed in E. Coli
Purification	This antibody is purified through a protein G column.
Molecular Weight	Predicted: 52 kD; Observed: 100 kD kD
Form/Buffer	Mouse IgG1. Liquid in PBS, pH 7.3, 30% glycerol, and 0.01% sodium azide.
Alternative Names	ATP6IP1; ATP6S1; VATPS1; XAP3; V-type proton ATPase subunit S1; V-ATPase subunit S1; Protein XAP-3; V-ATPase Ac45 subunit; V-ATPase S1 accessory protein; Vacuolar proton pump subunit S1
Gene Symbol	ATP6AP1
Entrez Gene	537(Human); 83615(Rat)
SwissProt	Q15904(Human); Q9R1Q9(Mouse)

\*AREX continuously optimizes our products. Webpage content may not reflect the latest updates. For inquiries, please contact [info@arexbio.com](mailto:info@arexbio.com) or your local distributor.

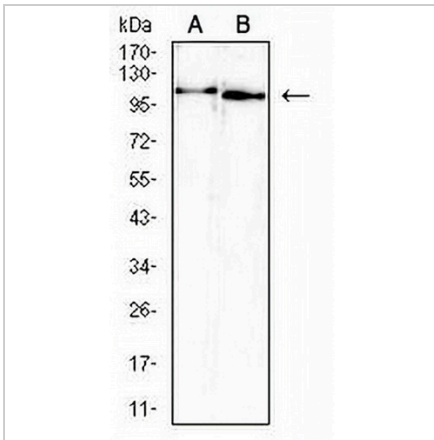
\*Clone Number, Reactivity, Source/Host and Clonality can be found in the product name and Key Features section above.

**DATASHEET**

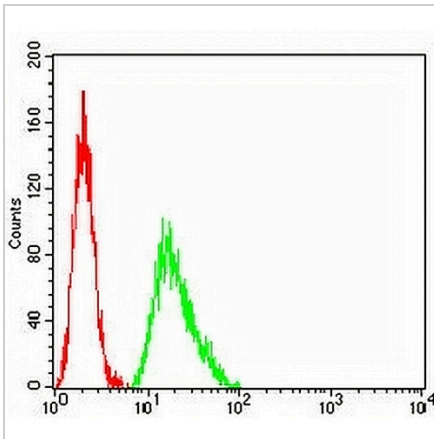
**ATP6AP1 Mouse Monoclonal Antibody(C2537)**

CAT. NO. AMA02149

**DATA**



Western blot analysis of ATP6AP1 expression in PC3 (A), Raw264.7 (B) whole cell lysates. (Predicted band size: 52 kD; Observed band size: 100 kD kD)



Flow cytometric analysis of HeLa cells using Anti-ATP6AP1 Antibody (green) and negative control (red).

**STORAGE**

Store at 4°C short term. For long term storage, store at -20°C, avoiding freeze/thaw cycles.

**NOTE**

For Research Use Only. Not for diagnostic, therapeutics, prophylactic or in vivo use.